

## **APPENDIX A – WRITTEN RESPONSES TO QUESTIONS THAT WERE NOT PUT AT THE MEETING**

### **6.1 Question from Rupia Rahman**

Does the Mayor believe that the Council's anti-social behaviour team fit for purpose, especially when it comes to dealing with unacceptable behaviour from neighbours?

#### **Response of Councillor Shiria Khatun (Deputy Mayor and Cabinet Member for Community Safety)**

Residents continue to tell us that anti-social behaviour is one of their top concerns, which is why we have made it one of our highest priorities. I am proud that Mayor Biggs has invested in Council services that deal with this problem, with extra money for the noise nuisance service and for the ASB team.

Our response to anti-social behaviour is led by the anti-social behaviour team, which currently consists of Tower Hamlets Enforcement Officers, Noise Nuisance Officers and the Rapid Response Team. They deal with noise nuisance in domestic/commercial premises, ASB related activity on the streets created by street drinkers, beggars, and youths as well as supporting policing operations. ASB case investigators deal predominantly with street related disorder, supporting private and rented sector tenants whilst supporting RSL's as necessary to comply with their duty of care.

Tackling anti-social behaviour effectively requires true partnership working – with every department of the Council working hand in hand with the police, Tower Hamlets Homes and other large housing providers, schools, and crucially the public – including ward panels, residents groups, and neighbourhood associations.

We want to make sure our approach is better co-ordinated and that our successes are better understood. That is why we will bring forward a new Anti-Social Behaviour Strategy, which will set out clearer lines of responsibility, and move towards better joint working on the ground. We will co-produce this strategy with our partners over the coming months.

### **6.2 Question from Sha Hussain**

Does the Mayor agree with Poplar Harca which has imposed a huge increase in parking charges on the resident? Is it not unfair and unjustifiable increase and what has the Mayor achieved for residents since his promise at the last Council petition to put pressure on Poplar Harca to decrease the charges?

## **Response of Councillor Sirajul Islam (Statutory Deputy Mayor and Cabinet Member for Housing Management & Performance)**

The Mayor was very concerned to learn of the high year-on-year increase in parking charges, and noted the very high number of enquiries from Poplar HARCA residents. He was disappointed that there had not been an appropriate level of engagement with residents prior to these changes being made.

The Mayor met with Poplar HARCA's Chair and Chief Executive, and more recently with the whole Board. As a result, Poplar HARCA agreed to reduce the increases to tenants and resident leaseholders from the proposed £7 a week for a bay and £15 a week for a garage, to much lower charges of £4 for a bay and £12 for a garage. The Mayor however remains of the view that the scale of increases is excessive and that the manner of communicating the proposals was very poor.

The Mayor met with the Chair and Chief Executive again recently, along with local ward Councillors. He raised further concerns, including reducing charges for permits for family members, and HARCA agreed to explore this and come back.

It is however in the end a matter for the HARCA. Like all other Housing Associations and the Council the Government has imposed a rent reduction of 1% for the next 4 years which has seriously impacted on income which pays for essential services.

Whilst the Mayor accepts that this is a difficult time for Poplar HARCA, he was pleased that following his intervention a more reasonable increase this year was agreed for tenants and resident leaseholders. It may be worth noting that the Council used to have representatives on the HARCA Board Directors, but that these were removed because of non-attendance under the previous Mayor. This has greatly weakened our, and your, voice and was a shameful failure.

### **6.3 Question from Tareq Talukder**

Does the Mayor believe that it is appropriate to cut funding of a high performing organisation such as NAFAS?

How does he intend to fill the gap that have been created by himself?

### **Response**

I would like to pay tribute to NAFAS' excellent work in running drug treatment services for vulnerable people in recent years, and regret that they have been unsuccessful in their bid to run drug treatment services in the future.

The Council has a duty to ensure best value. Drug / alcohol treatment services in Tower Hamlets (including but not limited to NAFAS) have not been

subject to a formal procurement exercise in over 6 years. Since 2010, there has been significant consultation amongst partner organisations, service providers and service users to establish the structure of a treatment system which is accessible to all and delivers optimal outcomes. As a result of that ongoing consultation, a new structure for drug and alcohol treatment services was established and agreed at Cabinet.

The procurement of 3 contracts to form that new treatment system has now been carried out in an open and transparent manner, and in accordance with legislation and LBTH policy, and whilst NAFAS were invited to tender as part of that process, their bid scored lower than other tenders put forward.

The new recovery support service that is to be commissioned will include all interventions that NAFAS are currently delivering as well as those currently delivered by; RAPt Island Day Programme, RAPt Changes Day Programme, and Nacro Intervention Link Service. In addition, the service will be contracted to deliver enhanced support to ensure individuals in recovery receive support and advocacy in relation to their accommodation, ETE and finances. There will be a flexible programme of structured psychosocial interventions and increased access to counselling services as well as less formal peer mentor led programmes and social activities.

## **6.6 Question from Mizan Rashid**

Can the Mayor explain why he is closing an unprecedented, record number of Youth Centres in the Borough?

### **Response of Councillor Rachael Saunders (Deputy Mayor and Cabinet Member for Education & Children's Services)**

It's important to recognise we are not cutting the youth service. These changes involve no cuts to the youth centre budget and no reduction in the number of hours service we provide.

In addition to serious allegations of fraud and malpractice made against the youth service under the previous Mayor we inherited a situation where some youth centres only had a single young person using each week. Others had failed basic health and safety checks and many had too few staff which meant very short notice closures leaving young people with nowhere to go.

We are acting to improve what was a youth service in crisis; it would be reckless not to act. Unlike the previous administration we take our responsibilities seriously. We are committed to improving the youth service so it is fit for purpose and provides a good quality service for as many young people as possible, whatever their background. That is why the new interim model will see 8 hub youth centres open six days a week supported by another 16 additional Council funded youth projects and a £120,000 summer programme of activities. On top of this we should not forget that there are many excellent non-Council funded youth clubs in the borough for example

the Rich Mix, Spotlight, HARCA and others. This is an interim set of changes and there will be a full consultation on longer term plans in the near future.

### **8.8 Question from Councillor Craig Aston**

Will the Mayor provide:-

- (a) a breakdown of the number of hours worked, and:-
- (b) full details of the items of advice tendered, by (1) "Mayoral advisor" Cllr Denise Jones, (2) "Mayoral advisor" Cllr Helal Uddin, and (3) "Mayoral advisor" Cllr David Chesterton.

### **Response of Mayor John Biggs**

I thank the Councillor for this opportunity to outline the new role of Mayoral Adviser, as agreed by Full Council at the AGM in May 2016.

The role of Mayoral Adviser is a way of involving Members with specialist knowledge in the leadership and policy roles of the Council, and to support and assist the Mayor and Cabinet. As part of the Mayor's normal decision making process, I will consult with Mayoral Advisers on issues related to their responsibilities and receive recommendations.

In order to carry out this role effectively, Mayoral Advisers are encouraged to consult with Council officers and Cabinet members as needed, with the support of the Mayor's Office.

The responsibilities of each Mayoral Adviser are explained in Appendix A1 to this document and will be publicly available on the Council's website. Their advice covers the areas of their briefs.

### **8.13 Question from Councillor Marc Francis**

What has been the income from parking charges at the St Mark's Gate car park in each month since their introduction?

### **Response of Councillor Ayas Miah (Cabinet Member for Environment)**

Please see below:

#### **St Mark's Gate car park figure since opening In January 2015**

Jan 2015	£1,168.00
Feb 2015	£986
Mar 2015	1,464.60
Apr 2015	£1,826.00
May 2015	£1,390.60

June 2015	£798.00
July 2015	£796.00
Aug 2015	£774.00
Sep 2015	£561.00
Oct 2015	£651.60
Nov 2015	£362.00
Dec 2015	£578.00
Jan 2016	£454.00
Feb 2016	£681.00
Mar 2016	£864.00
Apr 2016	£963.00
May 2016	£995.00
June 2016	£920.20
Total	<hr/> £16,233.00

#### **8.14 Question from Councillor Muhammad Mustaqim**

Does the current Mayor believe that the Council Tax-payer's money should be used to promote the Mayor and his Cabinet?

#### **Response of Mayor John Biggs**

No, not for political purposes.

All official communications by Tower Hamlets Council are now governed appropriately by the DCLG Publicity Code and the Tower Hamlets Communications Protocol.

This is of course a marked departure from the approach taken by the previous Mayor, who ordered his name and photo to be featured on official correspondence, advertising hoardings, Council building site hoardings, and throughout Council buildings.

#### **8.15 Question from Councillor Danny Hassell**

Following both the government's decision to cut public health funding (despite high levels of need and rising demand on many health services locally) as well as the decision that the NHS will not commission PrEP on a national basis (despite the research findings), can the lead member please update the Council on what steps have been taken to deliver prevention and support services to those at risk of, or living with HIV in the borough?

#### **Response of Councillor Amy Whitelock Gibbs (Cabinet Member for Health & Adult Services)**

Thank you for this important question. Sexual health is a key priority for me and the Mayor and represents a significant proportion of our public health spend, given the high levels of need we know we face in the borough.

Like you, I am deeply disappointed by the Government's short-sighted decision to cut the public health grant. In our savings proposals, we have sought to protect sexual health prevention and support services as much as possible, which has been welcomed by the sexual health sector locally.

We invest in a number of services e.g. enhanced sexual health promotion in high risk groups, living well with HIV, and health promotion in undiagnosed HIV. In our savings proposals, the Council has sought to mitigate the reduction in funding for these sexual health promotion services and proposes a reduction of 4% compared to an average of 13% across all Public Health areas. According to a national campaign run by sexual health charities, some boroughs have cut these kinds of HIV support services entirely.

I also have recently met with local service provider Positive East, to hear about the work that they do supporting residents living with HIV and preventing further HIV transmission. I am also meeting a range of local providers including Step Forward which supports young people, community pharmacies providing sexual health advice, and the clinics run by Barts health. We are committed to working with providers to support these services.

I was disappointed that NHS England has stated that PrEP is not within their legal powers to commission, despite having asked an expert group to work for a year to look at the evidence and make recommendations that PrEP should be funded by NHS England for key at risk groups. One of the research centres as part of this expert group's work was here in Tower Hamlets, at the Ambrose King Centre in Whitechapel.

Local residents were part of this trial, which was so effective at protecting participants from infection with HIV that the placebo element was ended early and then all participants were provided with PrEP. Since the national decision was taken, the Council has sought assurances from NHS England that the local residents who were receiving PrEP as part of the research trial would have their medication continued after September when their current prescriptions run out. We have just heard this will continue for 6 months.

Since this decision by NHS England not to consider PrEP for funding Council officers have been involved in developing and supporting the position of the Association of Directors of Public Health which expresses concern that NHS England is inappropriately seeking to shift commissioning responsibilities and costs to local authorities and that continued delay is not in the public interest.

A Judicial Review of the decision of NHS England not to consider PrEP for funding was instigated by the National AIDS Trust and the local authorities are party to this review through London Councils. The first hearing of the Judicial Review took place on the 13th July and a decision is anticipated within the next four weeks. Once the judgement has been made, the Council will be working with London Councils to review our position with regards to the future provision of PrEP.

### **8.16 Question from Councillor Peter Golds**

Will the Mayor inform the Council as to what representation his administration has made seeking to amend the TfL proposals to revise bus routes serving the Isle of Dogs, that will see Spindrif Avenue denuded of a bus service despite an increasing local population and a doctor's surgery.

### **Response of Councillor Ayas Miah (Cabinet Member for Environment)**

I share residents' concerns at the loss of service along Spindrif Avenue and the severance of the direct connection the D3 provides between Westferry Road / Spindrif Avenue and the Royal London Hospital. Having canvassed opinions from all local Ward Councillors affected by the proposals to change the 277 and D3 routes, officers responded to the consultation in March 2016.

Serious concern was expressed by the Council about both the loss of a service along Spindrif Avenue and the severance of the direct connection the D3 provides between Westferry Road / Spindrif Avenue and the Royal London Hospital. Access to health facilities and the proposed Civic Hub in Whitechapel will increase the need for better connections between these areas to fulfil a social need. While a direct link will be created on mainline Crossrail services in the future, this will not effectively serve this specific local demand.

A formal response from TfL is still awaited but we understand that a modification to the proposals has been made to reroute the 135 along Spindrif Avenue to protect a service along that link.

### **8.17 Question from Councillor John Pierce**

How much income has the Council received from film companies using buildings and streets in Weavers Ward as film locations in the last 3 financial years and the current year to date?

### **Response of Councillor David Edgar (Cabinet Member for Resources)**

The management of filming activity in the borough is undertaken under contract to the Council by the Film Office company. They provide monitoring figures for the Council but their systems do not allow for the production of reports giving income generated on a ward basis and so we are not able to provide the information requested.

### **8.18 Question from Councillor Gulam Kibria Choudhury**

In November 2015, Cllr Shiria Khatun said the Police were not previously recording Islamophobic crimes separately, but would do so from then on (i.e. from November 2015). Could she provide details of a) how many Islamophobic crimes have been recorded since November 2015 in Tower Hamlets? b) how many racist complaints and/or crimes have been recorded in

2014/15 and 2015/16, with a particular focus on numbers and percentage comparison with the previous five years?

**Response of Councillor Shiria Khatun (Deputy Mayor and Cabinet Member for Community Safety)**

The Police collect and hold this data, it is not held by the Council. A request for this information has been made and when received will be provided to Cllr Choudhury.

**8.19 Question from Councillor Chris Chapman**

Will the Mayor please inform the Council and residents of the Isle of Dogs as to why a speculative developer was permitted to demolish three grade two listed buildings in Eastferry Road, despite warnings being given to the Council that such an attempt was imminent?

**Response of Councillor Rachel Blake (Cabinet Member for Strategic Development)**

The short answer to the question is that the developer was not permitted to demolish these sites.

The property address is 2, 4 and 6 East Ferry Road and whilst the buildings are located in the Coldharbour Conservation Area, they are not Listed.

It would appear, that Building Control were served notices of intended demolition in January 2015, and as a matter of policy, development management were advised of these applications and the site owners were advised that no such demolition should proceed without planning permission. At that time no demolition took place and the matter was closed. Since then the properties were demolished on or around the 26th June without any permission from the Local Planning Authority.

Our Legal team are urgently considering a case for prosecution as on the face of it a criminal offence has been committed.

The site owner in law would need to apply for planning permission to demolish the aforementioned building. The owner was aware of this as he/she was informed in writing at the time the notices were served. The site was again visited on the 10 May 2016 and it was concluded that the block of buildings were sufficiently restrained to not need a dangerous structure notice. The owner/owners representative was contacted in writing on the 2 June 2016 asking his/her intention for the building. We did not receive a response

**8.20 Question from Councillor Abdul Asad**

Can the Community Safety Cabinet member provide the list of anti-social behaviour and crime hot-spots (areas with the highest number of anti-social behaviour) in the borough with respective crime rates – both percentage and



numbers - for each hot-spot with the types of crimes and corresponding numbers and percentages?

**Response of Councillor Shiria Khatun (Deputy Mayor and Cabinet Member for Community Safety)**

The Police collect and hold this data, it is not held by the Council. A request for this information has been made and when received will be provided to Cllr Asad.

As a snapshot please see attached Appendix A2.

**8.21 Question from Councillor Shah Alam**

I regularly walk in Mile End Park and have recently noticed an alarming increase in dropped litter, a general lack of upkeep, an increase in anti-social behaviour and gang related activity. One thing that residents have highlighted is if the Council could install more signs across the park with warnings against dropping litter other than provided bins, use penalty notices if needed which the Council has the power to do, and to ensure that THEOs are visiting it regularly to monitor the situation and to provide reassurance to local families and residents who use the park. Will the current Mayor listen and act?

**Response of Councillor Asma Begum (Cabinet Member for Culture)**

Cleanliness of local parks is an issue that has been raised with me by local residents, especially following warm weekends. It is important that park users are encouraged take their rubbish home with them, or use the bins provided.

I have asked officers to consider what options can be implemented to improve the operations in Mile End Park, and for this issue to be considered as part of the preparation for any new cleansing contract.

**8.22 Question from Councillor Ohid Ahmed**

Please provide the official recorded headline crime rate for the Borough, both in numbers and % terms, for each year since May 2011 until June 2016?

**Response of Councillor Shiria Khatun (Deputy Mayor and Cabinet Member for Community Safety)**

The Police collect and hold this data, it is not held by the Council. A request for this information has been made and when received will be provided to Cllr Ahmed.

**8.23 Question from Councillor Gulam Robbani**

How much new money in the budget for 2016/17 relates specifically to dealing with the scourge of drug-dealing and gangs related crimes which was not

available in the budget passed by the Council in February/March 2015 and February 2014?

**Response of Councillor Shiria Khatun (Deputy Mayor and Cabinet Member for Community Safety)**

From April 2016, the Council has invested in a Police Task Force of 5 officers and a Sergeant to support the work with enforcement. Tackling ASB will be an important priority for them. Through youth and children's services, we have also introduced a "Gangs Coordinator" to lead on the work in partnership as outlined in the Gangs Strategy.

Crime in Tower Hamlets is down 4% on last year – that means over 1,000 fewer offences. As a result the last year saw the lowest number of offences and lowest crime rate in over 15 years. At the same time public confidence has also increased - the fear of crime is now lower than at any time in the last six years

**8.24 Question from Councillor Aminur Khan**

How much new and extra money has been put in place, for out of hours' noise and nuisance service, in the 2016/17 budget and how does that compare to the budget passed in February/March 2015 and February 2014?

**Response of Councillor Shiria Khatun (Deputy Mayor and Cabinet Member for Community Safety) and Councillor Ayas Miah (Cabinet Member for Environment)**

In providing support to residents to reduce noise pollution and disturbances additional funding of £110,000 was approved (£75,000 as part year in 2015/16) to ensure the provision of a 24 hour noise service all weekend / every day of the week.

Original budget 2014/15 £48,682  
Original budget 2015/16 £48,682  
Original budget 2016/17 £158,682

**8.25 Question from Councillor Maium Miah**

How many total Council assets of any kind were sold by the Council between 1994 and 2010, what were these and at what price(s). Please provide clear details, breakdown, total money generated and how was it spent?

**Response of Councillor David Edgar (Cabinet Member for Resources)**

Details on disposals before 1997 are not available - corporate property or finance records do not go back that far.

We have compiled a list of asset sales between 1997 and the current date setting out the information requested which can be made available separately to you.

If information is required on a specific Council asset sold before 1997, then the external Land Registry office will need to be contacted for details. Please advise if there is a specific asset that information is required on.

When the Council disposes of assets, the capital receipt is held as unapplied until used to fund capital expenditure schemes within the Capital Programme set by Full Council each year.

### **8.26 Question from Councillor Suluk Ahmed**

Please provide a list of all properties, premises, assets that the Council manages in any capacity for which rent, rates or any other payments is received by the Council, its agencies and agents and calculated in the budget by the Council?

### **Response of Councillor Rachel Blake (Cabinet Member for Strategic Development)**

In line with the Local Government Transparency Code, the Council publishes a list of all Council-owned land and buildings on the website. This list includes details of the tenure characteristics of the site, including those that are leased out. This can be found in the Transparency section of the Council's website.

[http://www.towerhamlets.gov.uk/lgn/council\\_and\\_democracy/Transparency/transparency.aspx](http://www.towerhamlets.gov.uk/lgn/council_and_democracy/Transparency/transparency.aspx)

### **8.27 Question from Councillor Harun Miah**

When did the Blackwall Reach Regeneration Project start and what stage of completion (% of the project completed) was this project in June 2015?

### **Response of Councillor Rachel Blake (Cabinet Member for Strategic Development)**

Preparation for the Blackwall Reach project began in 2007/08 with adoption of the Development Framework and initial land acquisitions by HCA (now GLA). Following extensive consultation, and a hiatus during which the market crashed and the Council had to seek immunity from listing for Robin Hood Gardens, Swan was procured as developer in 2011, and formal decant/land assembly commenced. Outline planning and first stage detailed planning approvals followed in 2012 and physical work on new buildings started in 2013.

At June 2015 none of the homes had yet been fully completed, though they were nearing structural completion. The new community centre, housing office and replacement mosque were also incomplete, and the new school had not

yet been structurally completed. Since June 2015 these aspects of the project have reached structural completion and have been fitted out. Woolmore School, part-funded by s106 monies, was completed in readiness for the September 2015 intake.

It is difficult to quantify these initial outputs as a percentage of the multiple benefits and outputs that the overall scheme will deliver. With a large-scale scheme of this type, much unpublicised effort goes into the enabling stages of design, consultation, procurement and land assembly, including acquisition of residential and commercial owners, and decant of tenants. The land assembly process was ongoing at June 2015, and remains so at present.

The following example percentages therefore illustrate diverse aspects of scheme progress at June 2015.

- Foot-print of overall scheme area developed: 1.05 hectares (13%)
- Final completion of new homes: 0 (0%)
- Tenant decants by Council: 111 (54%)
- Residential acquisitions by Council: 23 (51%)

Each of these activities forms part of a sequence of events that has enabled the next rolling phase of the project to start and continue successfully.

At present, construction on Phase 1B is underway, Phase 2 start in 2016, and land acquisitions have progressed, with a CPO confirmed for 80% of the scheme area.

## **APPENDIX A1 – NOTE ON MAYORAL ADVISORS**

### **Mayor John Biggs**

At the AGM I proposed that Cabinet will continue with 9 members. It was agreed that we also create three 'Mayor Adviser' positions. These members would have no legal rights to delegated responsibilities as exercisable by Cabinet members but would instead advise the Mayor on key cross cutting matters.

The role of Mayoral Adviser is a way of involving Members with specialist knowledge in the leadership and policy roles of the council, and to support and assist the Mayor and Cabinet.

As part of the Mayor's normal decision making process he will consult with Mayoral Advisers on issues related to their responsibilities and receive recommendations. In order to carry out this role effectively, Mayoral Advisers are encouraged to consult with council officers and Cabinet members as needed, with the support of the Mayor's Office.

I said at the time that I would make more detailed proposals on the appointments.

The three proposed areas of responsibility are:

1. Service Quality & Performance
2. Strategic Planning
3. Community Engagement

The Mayoral Advisers for Community Engagement and for Service Quality & Performance will also have a responsibility for ensuring that equality considerations and outcomes are properly taken into account as we develop policy and make decisions.

### **Mayoral Adviser for Service Quality and Performance**

#### **Cllr Denise Jones**

To meet the Mayor regularly (at least monthly) to advise and update on work in the following areas of responsibility:

1. The performance and quality of services, as agreed with the Mayor and involving appropriate Cabinet Member(s), in areas where KPIs, Audit Reports or other indicators suggest under-performance, or where Mayoral Priorities suggest an additional focus is required, working with Cabinet Members/the Mayor as required.
2. In any event to consider the performance of services affecting the street environment, the Council's services to address ASB, and the performance of services in areas of the Council subject to restructuring through organisational change or in response to budget savings.

Also:

3. To consider, in consultation with the Mayor and Cabinet member, and advise on the Council's strategies related to Arts, Culture and Heritage
4. To advise the Mayor and lead member(s) on Streetscene, including waste and recycling performance and contracts

**Mayoral Adviser for Strategic Planning:**

**Cllr Dave Chesterton**

To meet the Mayor regularly (at least monthly) to advise and update on work in the following areas of responsibility:

1. Planning policy, including on revisions to the LDF and policy subsidiary to the LDF, responses to GLA and other planning policy changes and to local planning strategy, with particular reference to the Isle of Dogs and the City Fringe areas.
2. Major applications with particular reference to the Isle of Dogs and City Fringe.
3. To consider and advise on the infrastructure needs related to development, with particular reference to the Isle of Dogs and City Fringe areas.
4. To attend developer meetings with the Mayor/Cabinet Member for strategic planning, on the above.
5. To advise the Mayor on and represent him at the Isle of Dogs Neighbourhood Planning Forum

Also:

6. As the Mayor's Cycling adviser to advise the Mayor and Cabinet Member on cycling proposals, and the interests of cycling and cyclists.
7. To lead the Civic Centre Cross Party Working Group, reporting regularly to both the Mayor and the Cabinet member for Resources

**Mayoral Adviser for Community Engagement:**

**Cllr Helal Uddin**

To meet the Mayor regularly (at least monthly) to advise and update on work in the following areas of responsibility:

1. To advise the Mayor on community engagement and liaison.
2. To work with the Mayor in the development of local consultative forums.
3. To advise on engagement meetings with community groups, resident groups and key stakeholders.
4. To scrutinise and advise on the equalities implications of policy changes on the local community.
5. To advise the Mayor on the development of stronger inter-community relations and understanding and to advise the Mayor on policy actions to facilitate this.

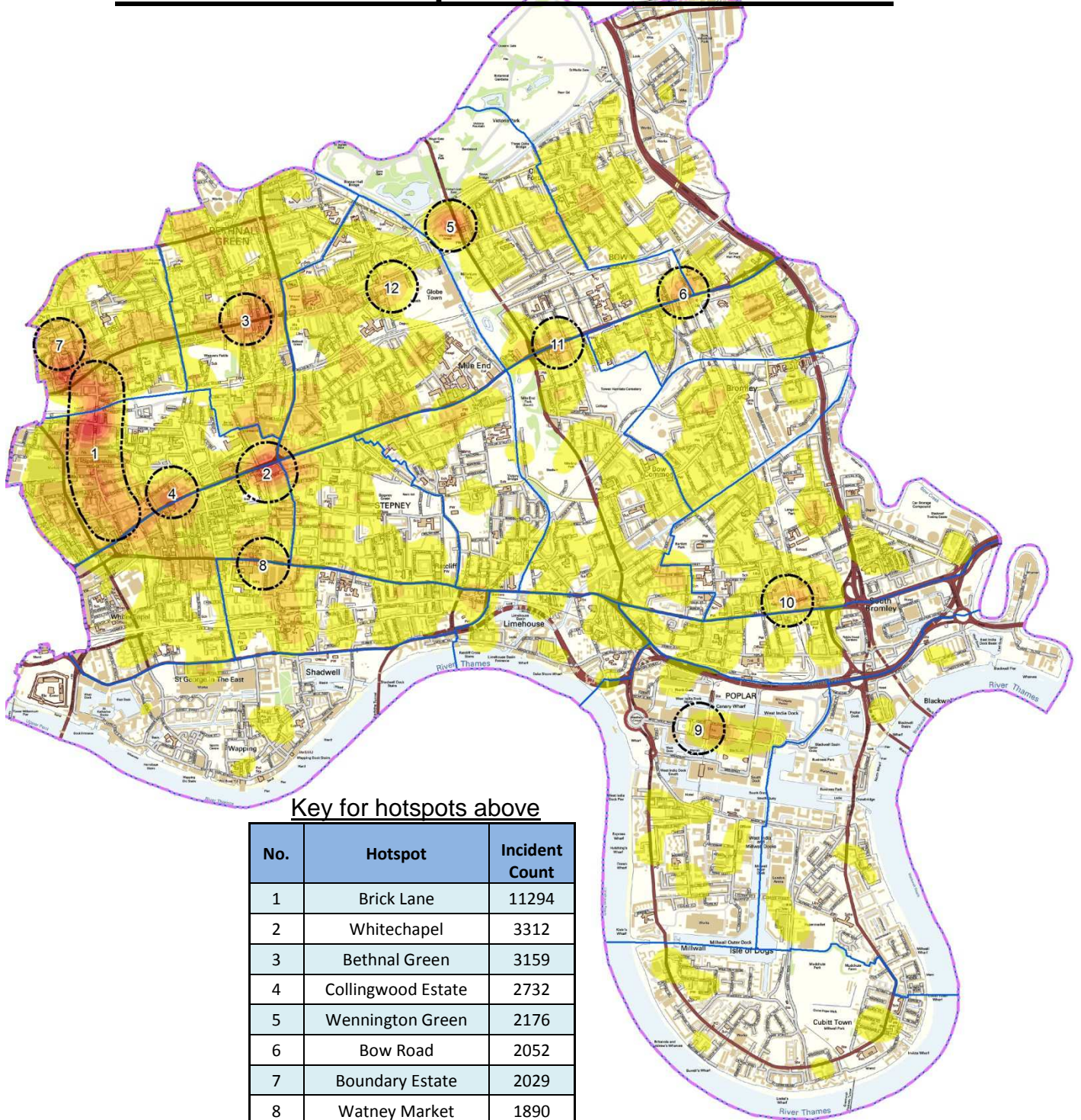
Also:

6. To work with the lead members for Health and Adult Services, Education and Children's Services, and Housing Management on the relationship of their areas of responsibility to the needs of Black & Minority Ethnic communities.



# APPENDIX A2

## ASB & Crime Hotspots between 2011 to 2016



Key for hotspots above

No.	Hotspot	Incident Count
1	Brick Lane	11294
2	Whitechapel	3312
3	Bethnal Green	3159
4	Collingwood Estate	2732
5	Wennington Green	2176
6	Bow Road	2052
7	Boundary Estate	2029
8	Watney Market	1890
9	Canary Wharf	1672
10	Chrip Street Market	1583
11	Mile End	1461
12	Morpeth Street	1403

### Legend

-  Hotspot Areas
-  Ward Boundary
-  Borough Boundary

0 500 1,000 Meters




### Breakdown of Crime and Anti-Social Behaviour complaints for ASB hotspots

Crime Type	Hotspot Locations Above																								Grand Total	
	1		2		3		4		5		6		7		8		9		10		11		12			
Incident Type	Calls	%	Calls	%	Calls	%	Calls	%	Calls	%	Calls	%	Calls	%	Calls	%	Calls	%	Calls	%	Calls	%	Calls	%	Calls	%
Anti-social behaviour	1539	1.9	997	1.2	2910	3.6	78	0.1	492	0.6	976	1.2	825	1.0	740	0.9	916	1.1	871	1.1	338	0.4	990	1.2	11672	14.4
Bicycle theft	51	1.4	27	0.7	177	4.8	42	1.1	24	0.6	45	1.2	12	0.3	19	0.5	18	0.5	19	0.5	37	1.0	126	3.4	597	16.0
Burglary	119	0.9	81	0.6	414	3.3	23	0.2	77	0.6	114	0.9	46	0.4	47	0.4	90	0.7	73	0.6	57	0.4	81	0.6	1222	9.6
Criminal damage and arson	148	1.4	76	0.7	375	3.7	40	0.4	85	0.8	85	0.8	53	0.5	53	0.5	95	0.9	74	0.7	25	0.2	101	1.0	1210	11.8
Drugs	97	0.9	179	1.6	1845	16.5	15	0.1	47	0.4	95	0.9	22	0.2	73	0.7	47	0.4	73	0.7	820	7.3	173	1.5	3486	31.2
Other crime	94	1.3	47	0.6	435	5.9	154	2.1	43	0.6	160	2.2	25	0.3	42	0.6	108	1.5	53	0.7	242	3.3	143	1.9	1546	20.9
Other theft	273	1.2	137	0.6	2230	9.6	718	3.1	155	0.7	468	2.0	62	0.3	139	0.6	253	1.1	161	0.7	262	1.1	680	2.9	5538	23.8
Possession of weapons	9	2.2	4	1.0	15	3.7	1	0.2	3	0.7	5	1.2	1	0.2	2	0.5	3	0.7	7	1.7	1	0.2	4	1.0	55	13.5
Public disorder and weapons	32	1.6	20	1.0	120	5.8	11	0.5	23	1.1	48	2.3	14	0.7	8	0.4	15	0.7	27	1.3	8	0.4	63	3.1	389	18.9
Public order	66	1.4	26	0.5	272	5.6	23	0.5	71	1.5	91	1.9	23	0.5	25	0.5	38	0.8	42	0.9	21	0.4	125	2.6	823	17.0
Robbery	84	1.4	52	0.9	223	3.7	6	0.1	59	1.0	41	0.7	48	0.8	44	0.7	60	1.0	39	0.6	93	1.5	102	1.7	851	14.0
Shoplifting	103	2.5	23	0.6	241	5.8	280	6.7	119	2.9	60	1.4	14	0.3	2	0.0	60	1.4	88	2.1	0	0.0	22	0.5	1012	24.3
Theft from the person	60	1.4	46	1.1	519	12.2	124	2.9	22	0.5	60	1.4	12	0.3	51	1.2	31	0.7	19	0.4	103	2.4	112	2.6	1159	27.3
Vehicle crime	95	0.7	144	1.1	240	1.8	21	0.2	93	0.7	69	0.5	54	0.4	57	0.4	92	0.7	98	0.7	46	0.3	91	0.7	1100	8.1
Violence and sexual offences	263	1.2	123	0.6	818	3.8	83	0.4	199	0.9	275	1.3	113	0.5	107	0.5	142	0.7	180	0.8	84	0.4	328	1.5	2715	12.6
Violent crime	126	1.2	47	0.5	460	4.5	53	0.5	71	0.7	140	1.4	79	0.8	52	0.5	84	0.8	66	0.6	39	0.4	171	1.7	1388	13.5
Grand Total	3159	1.5	2029	0.9	11294	5.2	1672	0.8	1583	0.7	2732	1.3	1403	0.6	1461	0.7	2052	0.9	1890	0.9	2176	1.0	3312	1.5	34763	16.1



## Tower Hamlets Crime and Anti-Social Behaviour complaints made to the Police between May 2011 and June 2016

Incident Type	2011-2012		2012-2013		2013-2014		2014-2015		2015-2016		Grand Total	
	No. of incidents	% of 2011-2012	No. of incidents	% of 2012-2013	No. of incidents	% of 2013-2014	No. of incidents	% of 2014-2015	No. of incidents	% of 2015-2016		
Anti-social behaviour	18246	39.6%	16391	36.8% ▼2.7%	16506	39.2% ▲2.4%	15352	36.8% ▼2.4%	14366	34.0% ▼2.8%	<b>80861</b>	<b>37.3%</b>
Bicycle theft		0.0%	106	0.2% ▲0.2%	1338	3.2% ▲2.9%	1159	2.8% ▼0.4%	1121	2.7% ▼0.1%	<b>3724</b>	<b>1.7%</b>
Burglary	2566	5.6%	2856	6.4% ▲0.9%	2420	5.7% ▼0.7%	2360	5.7% ▼0.1%	2483	5.9% ▲0.2%	<b>12685</b>	<b>5.9%</b>
Criminal damage and arson	1667	3.6%	2069	4.7% ▲1.0%	2021	4.8% ▲0.1%	2285	5.5% ▲0.7%	2209	5.2% ▼0.2%	<b>10251</b>	<b>4.7%</b>
Drugs	2312	5.0%	3117	7.0% ▲2.0%	2407	5.7% ▼1.3%	1775	4.3% ▼1.5%	1557	3.7% ▼0.6%	<b>11168</b>	<b>5.2%</b>
Other crime	5534	12.0%	1094	2.5% ▼9.5%	205	0.5% ▼2.0%	222	0.5% ▲0.0%	334	0.8% ▲0.3%	<b>7389</b>	<b>3.4%</b>
Other theft	5182	11.2%	7134	16.0% ▲4.8%	3823	9.1% ▼7.0%	3539	8.5% ▼0.6%	3614	8.6% ▲0.1%	<b>23292</b>	<b>10.8%</b>
Possession of weapons	Included below	0.0%	8	0.0% ▲0.0%	108	0.3% ▲0.2%	116	0.3% ▲0.0%	176	0.4% ▲0.1%	<b>408</b>	<b>0.2%</b>
Public disorder and weapons	935	2.0%	1119	2.5% ▲0.5%	<i>Recorded separately as Possession of Weapons or Public Order</i>						<b>2054</b>	<b>0.9%</b>
Public order	Included above	0.0%	108	0.2% ▲0.2%	1244	3.0% ▲2.7%	1651	4.0% ▲1.0%	1850	4.4% ▲0.4%	<b>4853</b>	<b>2.2%</b>
Robbery	1300	2.8%	1385	3.1% ▲0.3%	1158	2.8% ▼0.4%	1133	2.7% ▼0.0%	1120	2.7% ▼0.1%	<b>6096</b>	<b>2.8%</b>
Shoplifting	465	1.0%	793	1.8% ▲0.8%	829	2.0% ▲0.2%	950	2.3% ▲0.3%	1130	2.7% ▲0.4%	<b>4167</b>	<b>1.9%</b>
Theft from the person		0.0%	139	0.3% ▲0.3%	1443	3.4% ▲3.1%	1321	3.2% ▼0.3%	1349	3.2% ▲0.0%	<b>4252</b>	<b>2.0%</b>
Vehicle crime	2614	5.7%	2655	6.0% ▲0.3%	2592	6.2% ▲0.2%	2756	6.6% ▲0.5%	2951	7.0% ▲0.4%	<b>13568</b>	<b>6.3%</b>
Violence and sexual offences		0.0%	458	1.0% ▲1.0%	6015	14.3% ▲13.3%	7081	17.0% ▲2.7%	7936	18.8% ▲1.8%	<b>21490</b>	<b>9.9%</b>
Violent crime	5261	11.4%	5053	11.4% ▼0.1%	Included above						<b>10314</b>	<b>4.8%</b>
<b>Grand Total</b>	<b>46082</b>	<b>100.0%</b>	<b>44485</b>	<b>100.0%</b>	<b>42109</b>	<b>100.0%</b>	<b>41700</b>	<b>100.0%</b>	<b>42196</b>	<b>100%</b>	<b>216572</b>	<b>100.0%</b>

NB. Data for statistics and map was extracted from [www.data.police.uk](http://www.data.police.uk) website