

# Children's Services Directorate

**Steve Reddy, Corporate  
Director Children's Services**

11<sup>th</sup> July 2024



# Context



- There were **64,200** 0 to 17 year-olds in the borough in 2021. That's **21%** of the population, and an increase of 8,855 between 2011 – 2021.
- More than **1 in 4 children (27%)** living in relative low income families (2023). This figure rises to around 1 in 2 children when housing costs are taken into account.
- **301** children were looked after, including **31** unaccompanied asylum seeking children (as of March 2023). The through care service was working with **459** young people aged 14 to 25.
- **96%** of pupils in the borough in schools rated good or outstanding (December 2023).
- **68%** of pupils in Year 6 met the expected standard in reading, writing and maths, equal to the inner London average of 68% (2022/23).
- **69%** pupils achieved grade 4+ in GCSE English & Maths, slightly lower than London average of 71% (2022/23).
- **18%** of pupils with a special need or disability (2022/23).
- **18.5%** of reception age children, and **42.7%** of year 6 children were overweight or obese in 2022/23.
- There were **142** first time entrants to the criminal justice system for every 100,000 10-17 year olds in 2022, below the London average (167)



**Corporate Director  
Children's Services**

**Steve Reddy**



**Director Children's Social  
Care (Supporting Families)**

**Susannah  
Beasley-Murray**



**Director For Education**

**Lisa  
Fraser**



**Director Commissioning  
and Youth**

**Layla  
Richards  
(Covering)**



**Youth justice**

**Early Help**

**SEND &  
Educational  
Psychology**

**School  
Governors, Info &  
Traded Services**

**Safeguarding &  
quality assurance**

**Assessment &  
early intervention**

**Pupil Access &  
School  
Sufficiency**

**Tower Hamlets  
Virtual School**

**Children with  
disabilities/  
family support  
and child  
protection and  
exploitation**

**Children looked  
after/leaving care**

**Social work  
academy**

**Children's  
resources**

**Early Education & Childcare**

**Young Tower  
Hamlets**

**Strategy and  
Commissioning**

**Contract Services**

**Music service/  
Arts Education**

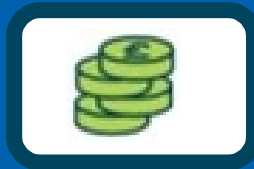


# About the directorate

1,553  
staff



Budget of £94  
million for  
2024/25



Schools budget  
of £337  
million for  
2024/25



# TH Strategic Plan: Children's Services Priorities



## PRIORITY

## PLEDGES / POLICIES



**TACKLING THE  
COST OF  
LIVING CRISIS**

Mayor's Education  
Maintenance Allowance

University Bursaries

Universal Free school  
meals primary and  
secondary



**ACCELERATE  
EDUCATION**

Nursery and day care  
provision

Work opportunities for care  
experienced children

SEND support

Review of sixth  
forms and college  
performance

Early help & family  
hubs

Breakfast Club provision

Promoting high quality  
learning

Child Healthy  
Weight

Adolescent offer

Young Tower Hamlets

Support for GCSEs



**INVEST IN  
PUBLIC  
SERVICES**

Improvement of services:  
children's social care, youth  
justice and SEND

Support for children at risk  
of poor mental health



# 23/24 Annual Delivery Plan Priorities – Quarter 4 (Part A)



Ref	Measure	2023-24 Outturn	Q4 Outturn	Q4 Min Target	Q4 Target	Q4 RAG
KPI 001	Number of EMAs awarded	Data Available June 2024	Data Available June 2024	750	1250	Data Available June 2024
KPI 002	Number of university bursaries awarded	Data Available June 2024	Data Available June 2024	360	400	Data Available June 2024
KPI 012	Number of primary school pupils in KS2 receiving council-funded FSM	11,542	11,542	No target	No target	Data only
KPI 013	% of primary school pupils in KS2 receiving council-funded FSM	91%	95%	80%	85%	Green
KPI 014	Number of secondary school pupils receiving council-funded FSM	11,040	11,040	No target	No target	Data only
KPI 015	% of secondary school pupils receiving council-funded FSM	69%	74%	No target	No target	Data only
KPI 016	Number of young people who contacted and registered with the Council's and Council commissioned youth centres	6,076	6,076	5,220	5,800	Green
KPI 017	Number of users who regularly attend the Council's and Council commissioned youth services	4,009	4,009	3,600	4,000	Green
KPI 018	Number of young people engaged with the Council's and Council commissioned youth centres who achieve a recorded outcome	2,073	2,073	1,665	1,850	Green



# 23/24 Annual Delivery Plan Priorities – Quarter 4 (Part B)



Ref	Measure	2023-24 Outturn	Q4 Outturn	Q4 Min Target	Q4 Target	Q4 RAG
KPI 019	Number of young people engaged with the Council's and Council commissioned youth centres who achieve an accredited outcome	689	689	540	600	Green
KPI 020	Number of active education, health and care (EHC) plans	4,550	4,550	No target	No target	Data only
KPI 021	% of education, health and care (EHC) assessments completed within 20 weeks	51%	55%	59%	65%	Red
KPI 023	Number of children supported by the Early Help Children and Family Service	20,769	20,769	17,000	19,000	Green
KPI 024	% of contacts into MASH that are reviewed and progressed within timescales	96%	96%	90%	95%	Green
KPI 025	Rate of first time entrants to the Youth Justice system	Data Available June 2024	Data Available June 2024	185	155	Data Available June 2024
KPI 026	% of young people that re-offend	Data Available June 2024	Data Available June 2024	30%	20%	Data Available June 2024
KPI 027	Number of children subject to protection plans	307	307	No target	No target	Data only
KPI 028	% of Care Leavers aged 17-25 who are in education, employment or training (EET)	73%	73%	65%	75%	Amber
KPI 029	Number of children looked after	276	276	No target	No target	Data only



# Priorities for the coming year



- Develop support for Key Stage 5 students and progress proposals for Institute for Academic Excellence
- Prepare for inspections of Children's Social Care, Youth Justice and SEND.
- Launch Young Tower Hamlets
- Complete the roll out of Family Hubs
- Work with partners to deliver our Accelerate! partnership plan





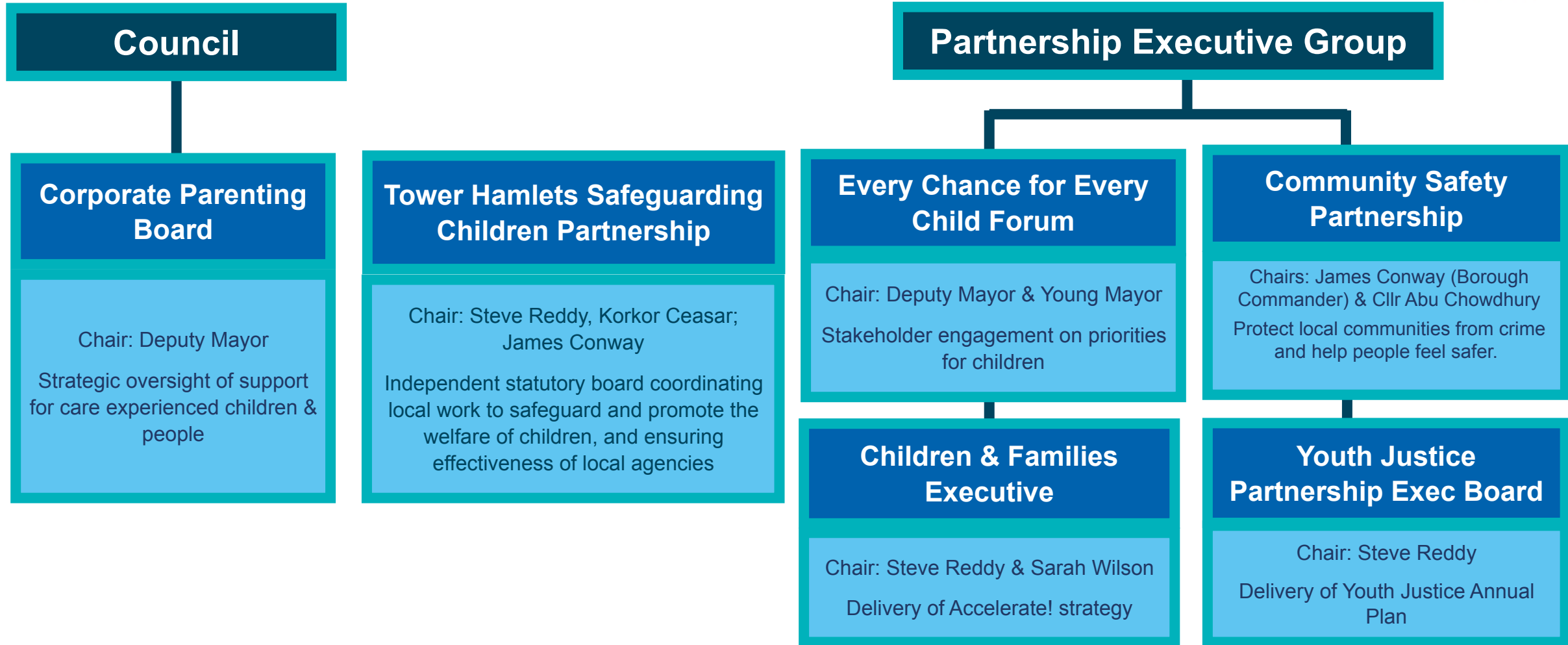
# Our local stakeholders



- Families, children and young people
- Schools : 66 primary; 17 secondary; 8 registered independent secondary, 4 '14 to 19' provision and 5 special schools
- Nurseries and childminders
- Community and voluntary sector groups and the local Voluntary Sector Children and Youth Forum
- Local health partners including the GP Care Group, East London Foundation Trust (CAMHS) and the Royal London Hospital
- Metropolitan police



# Key partnership boards



# Key elected members we work with



## Executive Mayor

Oversight of services and activities that fall within the Mayor & Cabinet Portfolios.

See further details [here](#)

## Deputy Mayor & Cabinet Member for Education, Youth and Lifelong Learning

Political responsibility for the leadership, strategy and effectiveness of local authority children's services (Statutory guidance [here](#))

Oversight of children's services and activities.

Chairs Corporate Parenting Board

## Chair of the Children and Education Scrutiny Sub-Committee

The committee discharges the council's statutory functions to undertake overview and scrutiny, as they relate to Children's and Education matters. See further details [here](#)



# Member responsibilities - children's services



## Members of the Children and Education Scrutiny Sub-Committee

Members of committee take part in scrutinising the provision, planning and management of children and young people's services

## Councillor Members of the Corporate Parenting Board

Responsibilities of the board include maximising the voice of children in meetings, policy and service developments and maintaining a focus on delivery of Corporate Parenting Strategy. An report on the work of the board is produced annually.

## Corporate Parenting Responsibilities for all Councillors

- All staff & all elected members share corporate parenting responsibilities.
- When a child comes into care (or is under 25 and was looked-after for a certain period of time) the Local Authority (LA) becomes their 'corporate parent'
- Guided by the 'Corporate Parenting Principles' - focused on the needs that children and young people have, which good parents would generally meet, and local authorities must have regard to ([link here](#))



# What issues do members usually get involved in?



- Safeguarding
- School places
- Provision for children and young people with special educational needs and disabilities
- Complaints



# How can members support children and families?



- Let families know what's available: bursaries, EMA, Family Hubs & the Local Offer
- Promote fostering [www.fosteringtowerhamlets.co.uk](http://www.fosteringtowerhamlets.co.uk)
- Champion care experienced children as a 'Corporate Parent'
- Encourage children and young people to get involved in Young Tower Hamlets, our Youth Council and Young Mayor scheme and other fantastic groups for young people
- Encourage residents to take part in consultations via 'Let's Talk Tower Hamlets'



# Key contacts



Role	Name	Email	Executive Support
Corporate Director Children's Services	Steve Reddy	steve.reddy@towerhamlets.gov.uk	Starina Richmond d'Monte Tel: 020 7364 4956
Director of Children's Social Care (Supporting Families)	Susannah Beasley-Murray	susannah.beasley-murray@towerhamlets.gov.uk	Caleigh Freeman Tel: 020 7364 2169
Director of Education	Lisa Fraser	lisa.fraser@towerhamlets.gov.uk	Sharon Thomas Tel: 020 7364 4056
Covering Director of Commissioning and Youth	Layla Richards	layla.richards@towerhamlets.gov.uk	Sharon Thomas Tel: 020 7364 4056



# Safeguarding children contacts



## What should you do if you are concerned about a child?

If you have a concern about the welfare or safety of a child during the office hours of 9am-5pm, you should contact the Tower Hamlets MASH:

Tel: 020 7364 5006 option 3  
Extensions: 5606/5601/5358/7796  
Email: [Mash@towerhamlets.gov.uk](mailto:Mash@towerhamlets.gov.uk)

If a child is in immediate danger, please call the police on 999

Your responsibility is to report your concerns. A Social Worker will follow these up with any necessary investigations or assessment or alternatively contact:

Emergency Duty Team (EDT) – Out of hours service  
Tel: 020 7364 4079 (after 5pm and at weekends).

**Link on TH Website:** [Safeguarding Children Partnership \(towerhamlets.gov.uk\)](https://www.towerhamlets.gov.uk/safeguarding-children-partnership)

