



Health and Wellbeing in Tower Hamlets - headlines

Dr Somen Banerjee
Director of Public Health
London Borough of Tower Hamlets



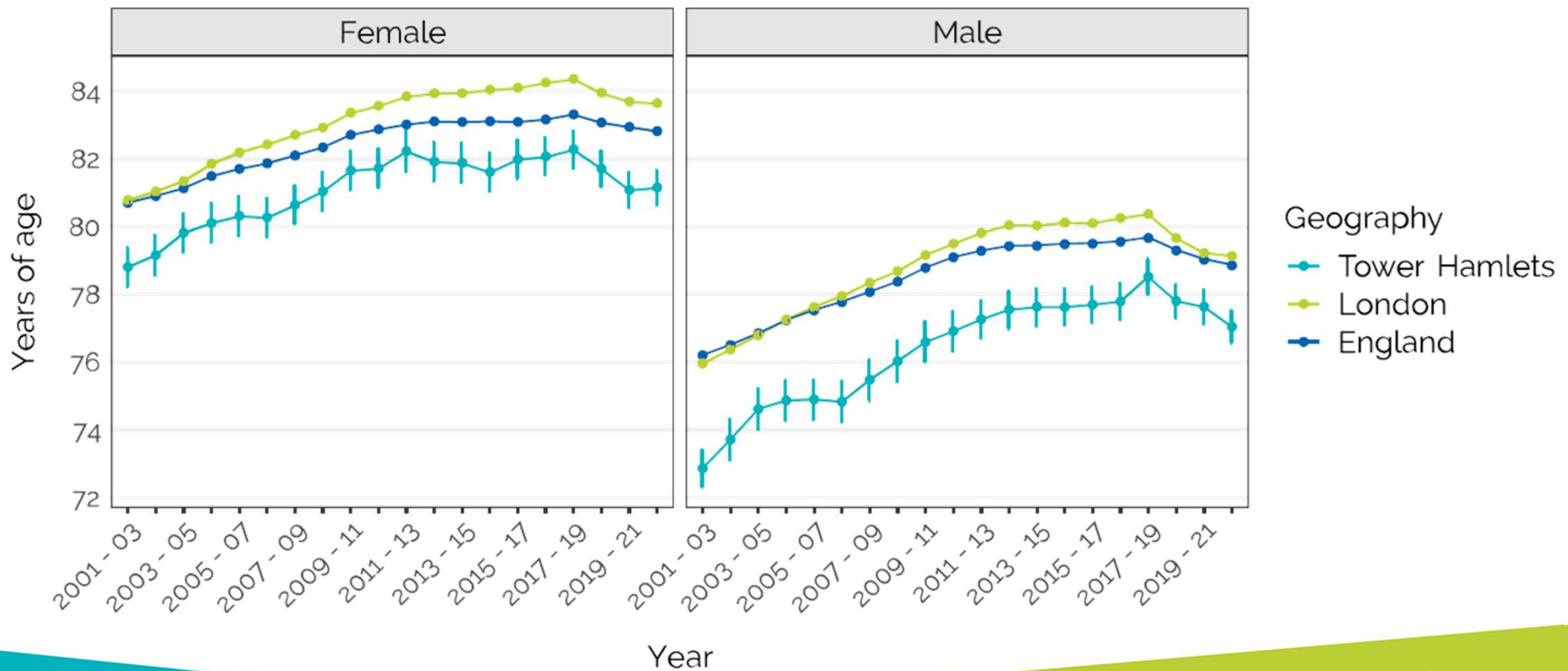
Overview



- Statutory function of the Health and Wellbeing Board to understand health and wellbeing trends in the borough
- Following Covid, has taken time for data flows to be fully reestablished
- Public Health have done an in-depth review:
 - Health data
 - Evidence
 - Outcomes
 - Key messages to residents
- This will be put on the council website as a foundational knowledge resource for the health and care and wider partners
- This presentation covers highlights from the review



Life expectancy in Tower Hamlets is lower than London



The best of London
in one borough





Demographics

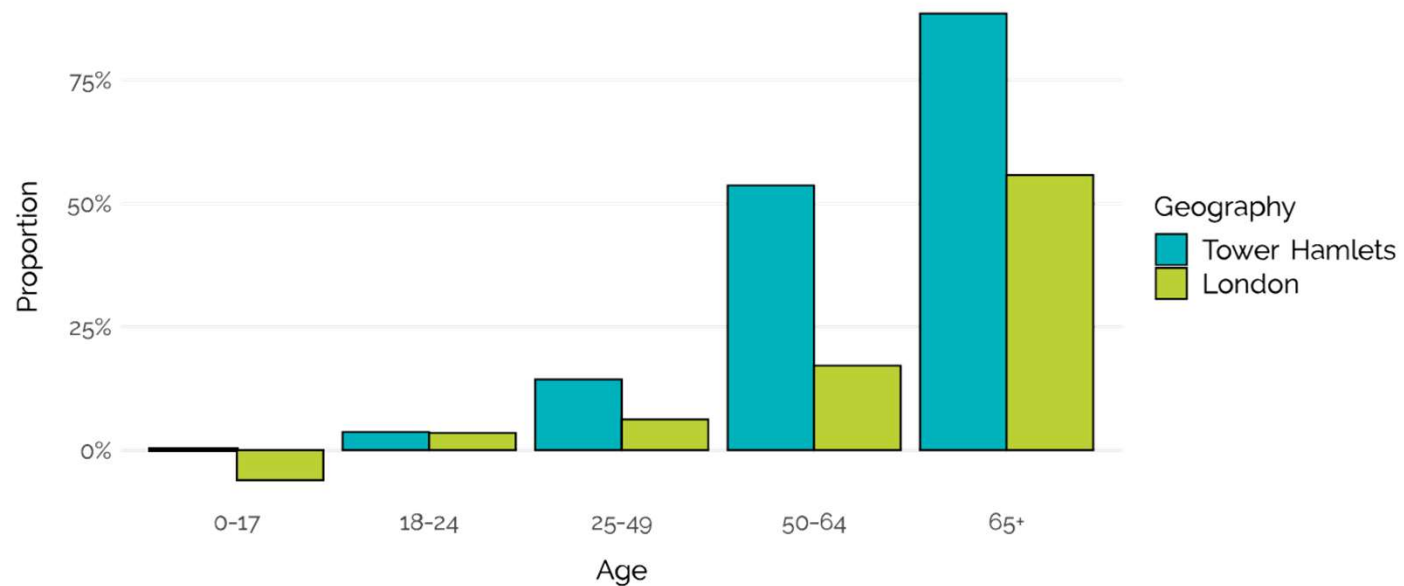
The best of London
in one borough



The Tower Hamlets population is projected to age faster than London



Figure 3: Percentage population by change by 2040 (2021-based)



Source: GLA 2021-based demographic projections

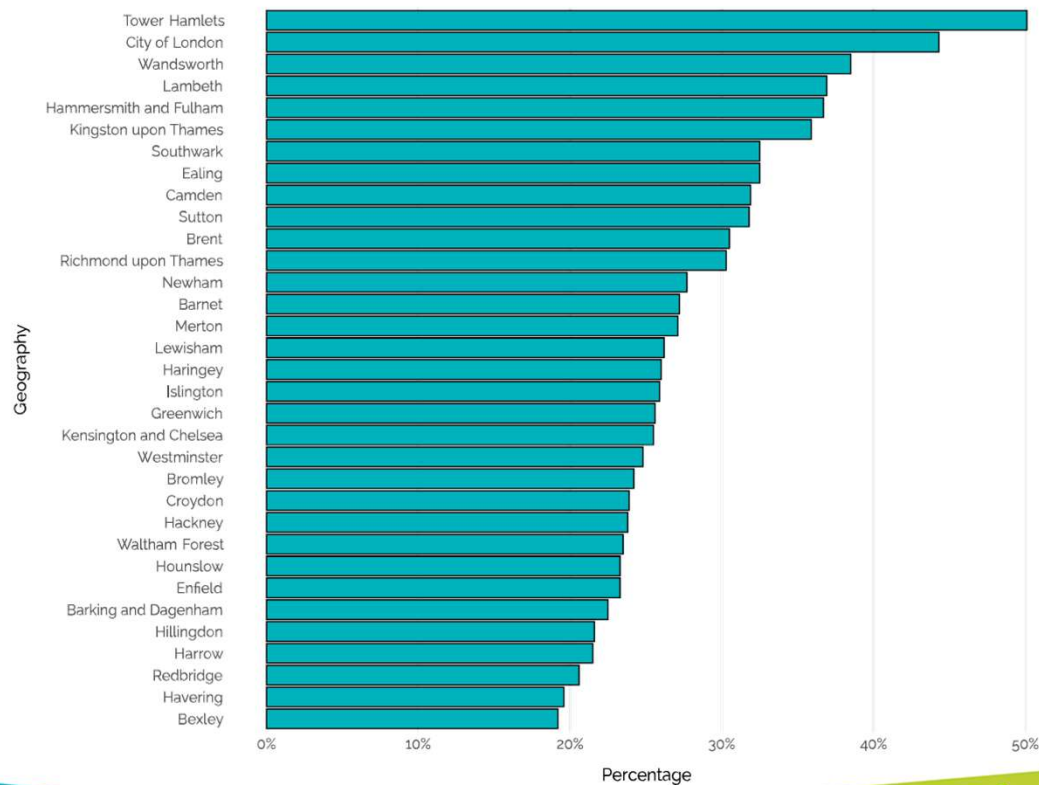
The best of London
in one borough



Tower Hamlets has the highest population churn in London



Figure 4: Population churn after 5 years



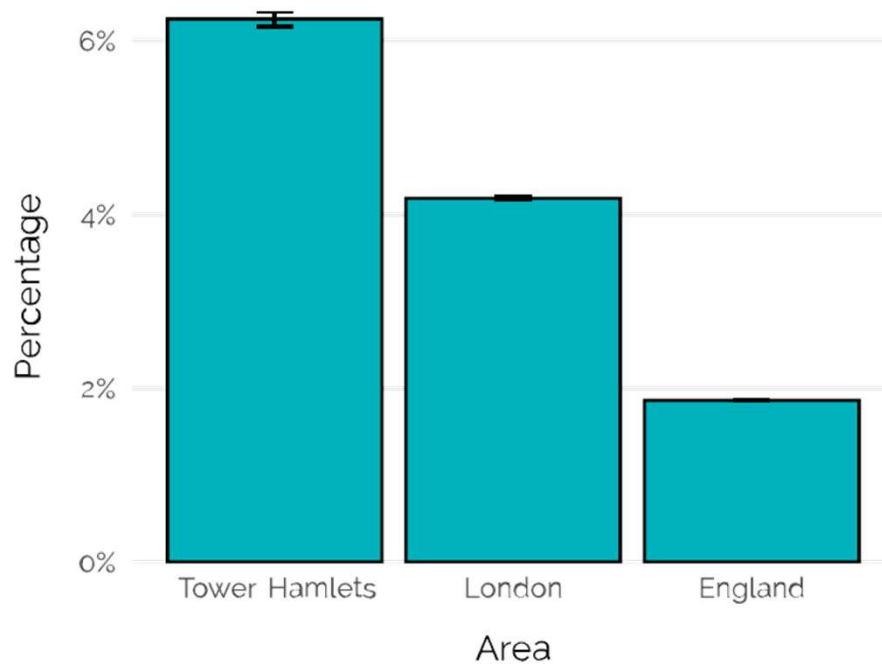
The best of London
in one borough



A higher proportion of Tower Hamlets residents cannot speak English well



Figure 10: Cannot speak English well or at all, 2021



Source: Census (2021)

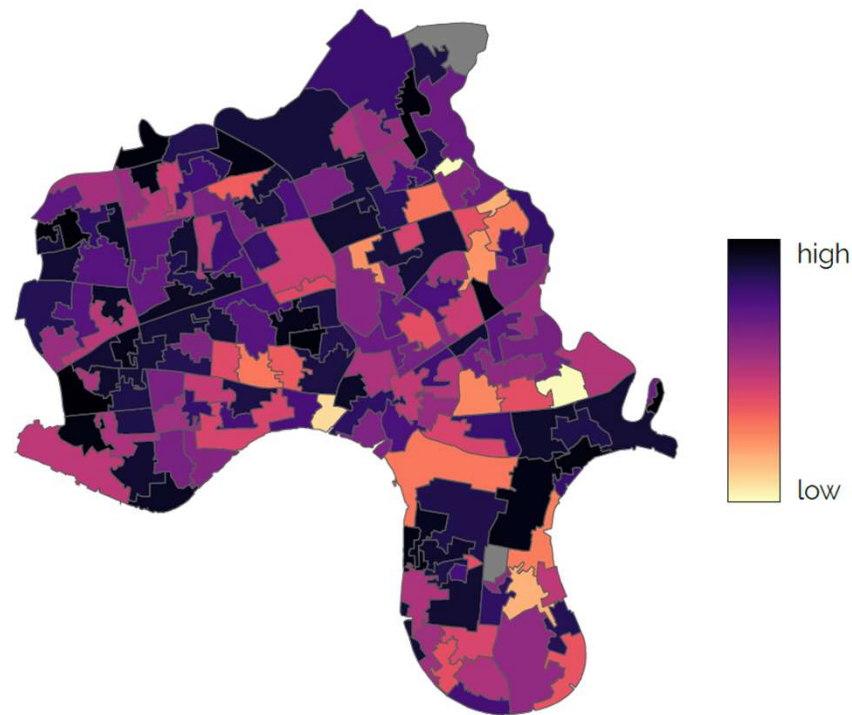
The best of London
in one borough



Recent analysis shows the extent of ethnicity related inequality



Figure 16: Difference in EGDI Decile between most and least deprived ethnic group



Source: Lloyd, C.D. et al. (2023) An ethnic group specific deprivation index for measuring neighbourhood inequalities in England and Wales.

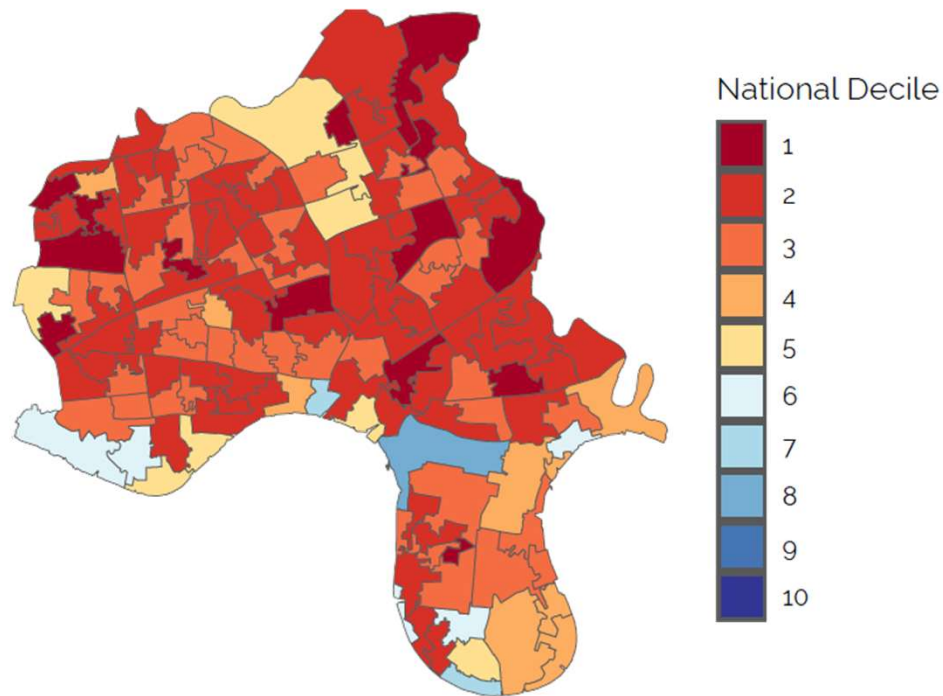
The best of London
in one borough



Tower Hamlets has amongst the highest levels of child poverty in the UK



Figure 4: Indices of Deprivation based on Income Deprivation Affecting Children Index (IDACI) in Tower Hamlets



Source: 2019 Index of Multiple Deprivation

The best of London
in one borough





Environments

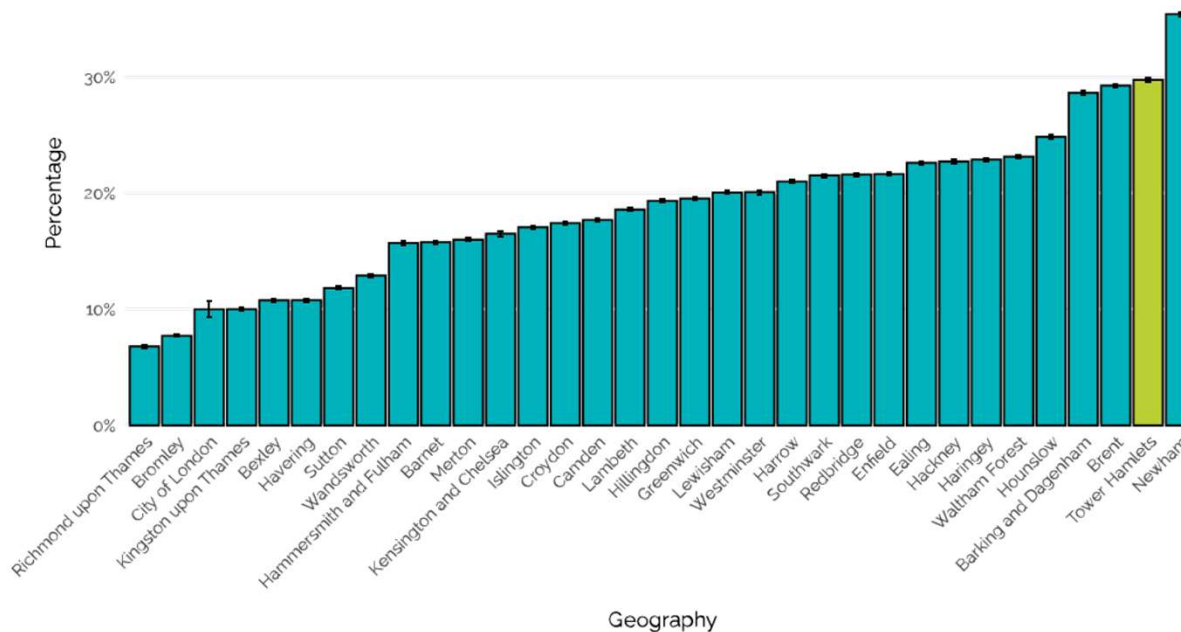
The best of London
in one borough



Tower Hamlets has second highest levels of overcrowding in London



Figure 21: Proportion of residents living in overcrowded accommodation



Source: Census 2021

Figure 21 shows Tower Hamlets has the second highest proportion of residents living in overcrowded accommodation amongst London boroughs.

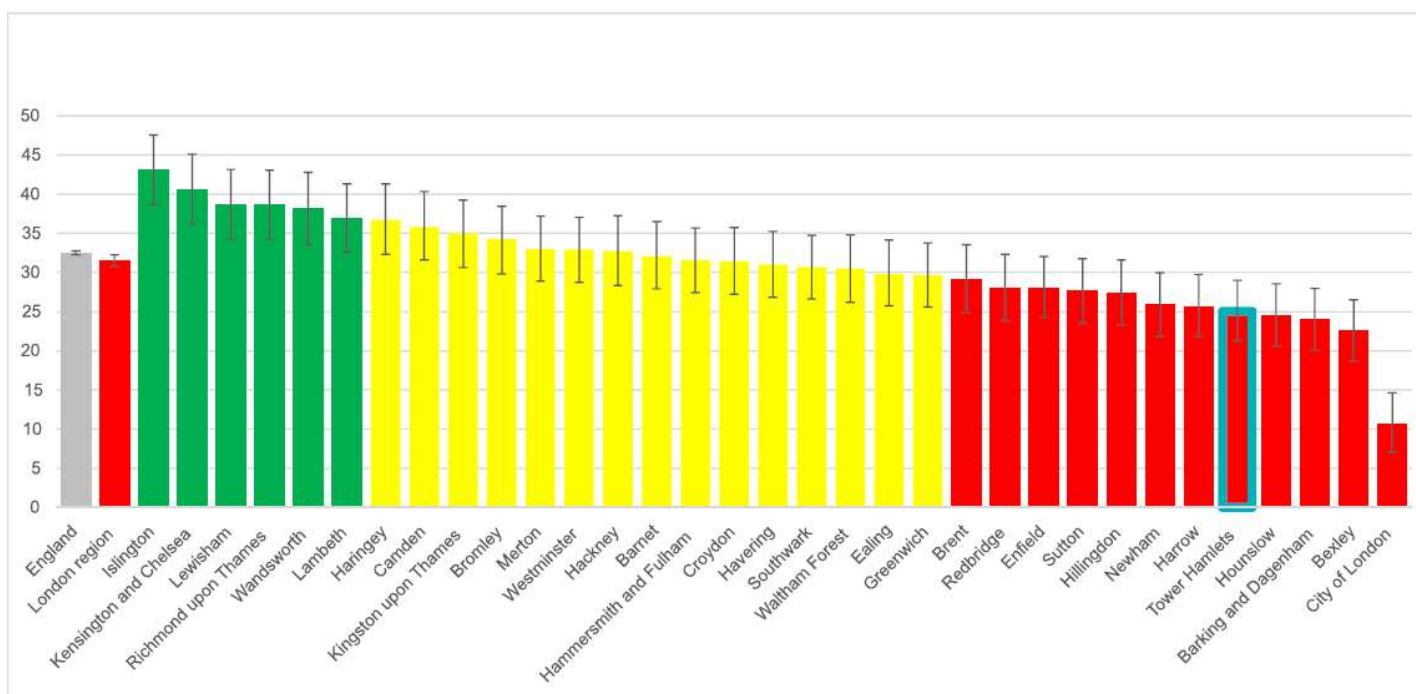
The best of London
in one borough



Tower Hamlets residents have lower consumption of 5 a day than London



Figure 16: Percentage of adults, 16+, meeting 5-a-day consumption recommendation, RAG rated by statistical comparison to England, the London region and other London Boroughs.



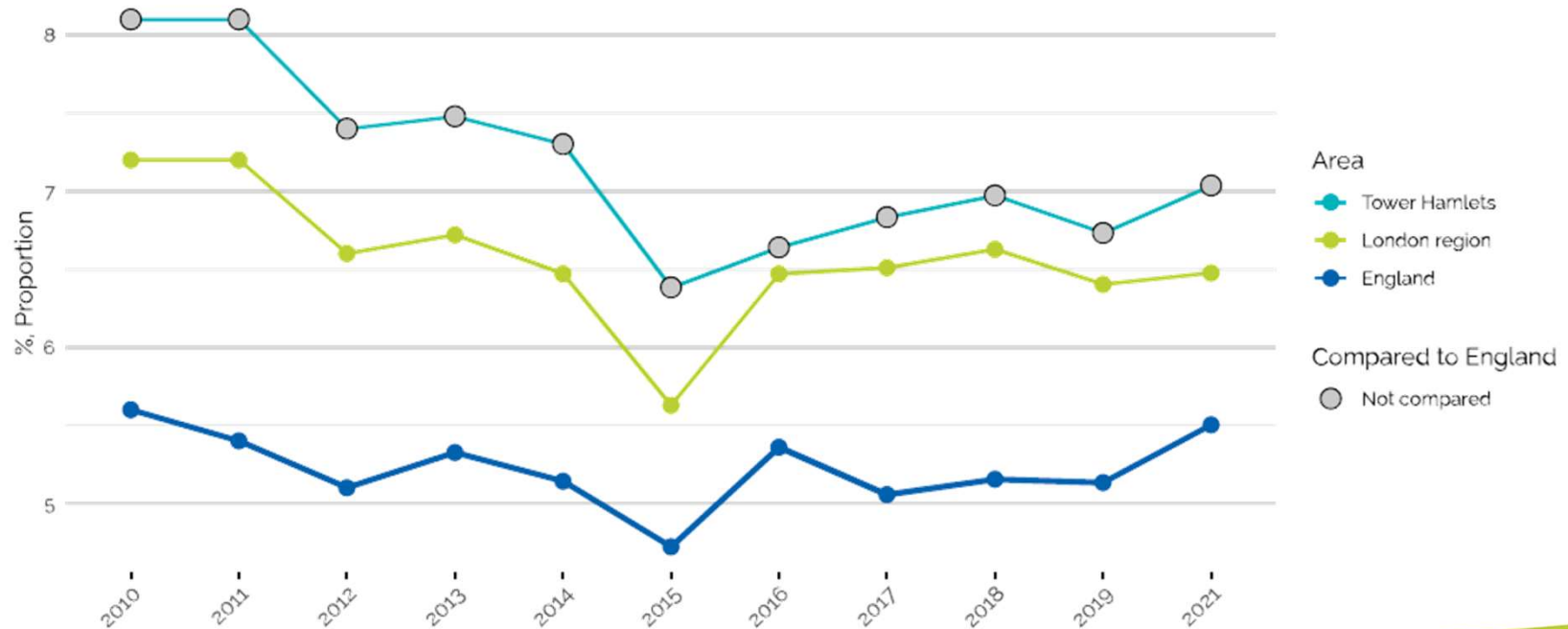
The best of London
in one borough



Tower Hamlets residents are more affected by poor air quality than London



Figure 35: Fraction of mortality attributable to particulate air pollution (old method), Persons, 30+ yrs



The best of London
in one borough





Maternity, early years, children

The best of London
in one borough

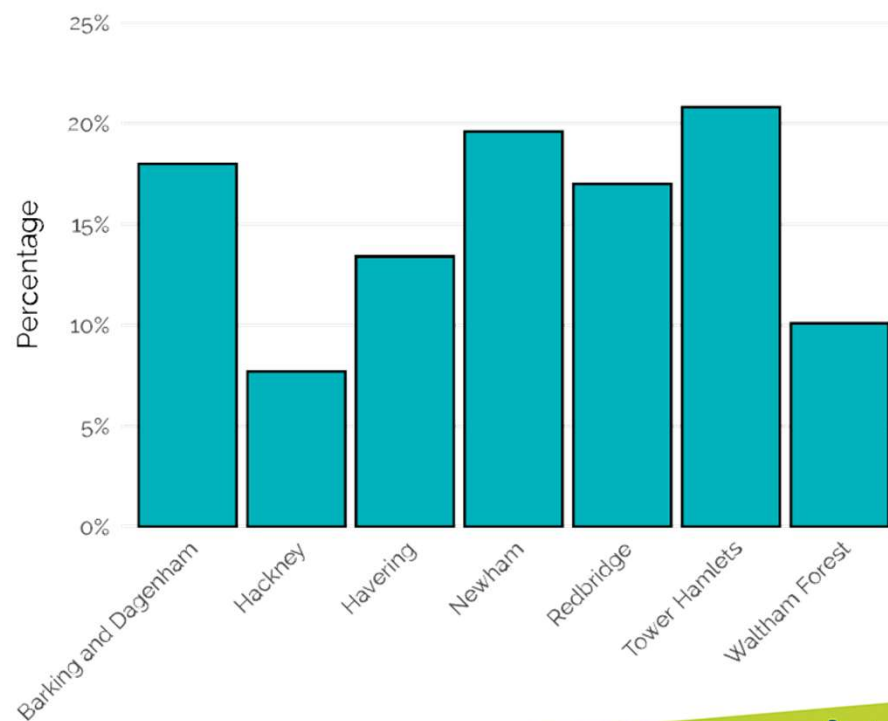


Gestational diabetes impacts more on pregnant women in Tower Hamlets



Gestational diabetes

Percentage of pregnancies complicated by diabetes



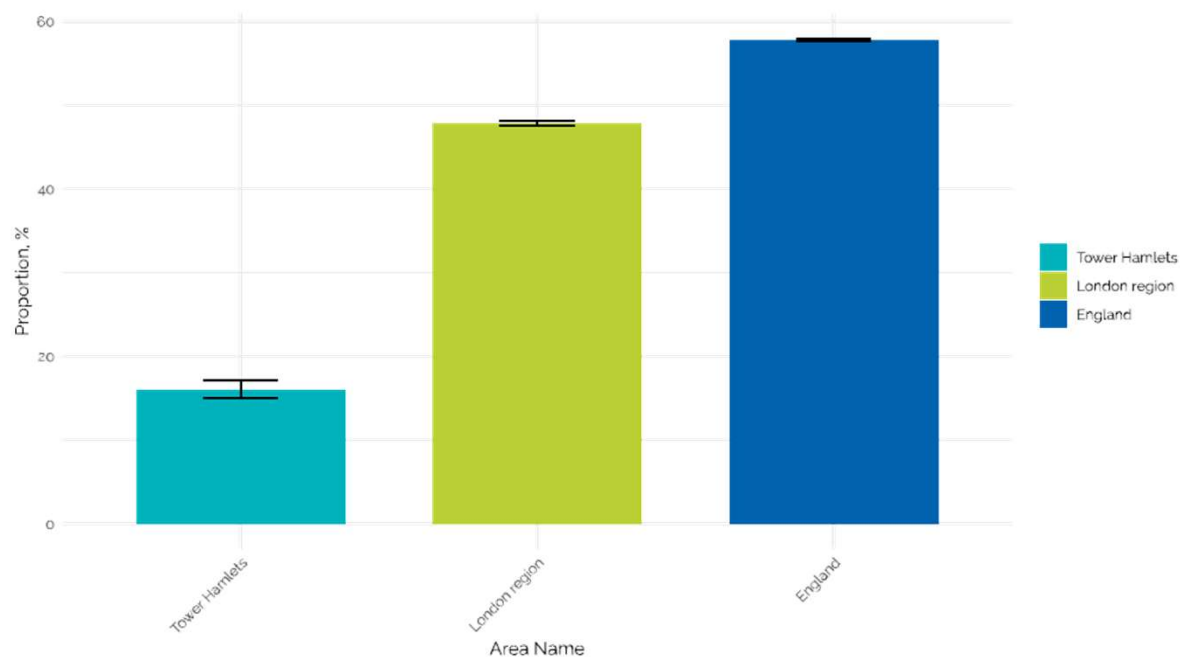
The best of London
in one borough



Early access to maternity care is much lower in Tower Hamlets – why?



Figure 9: Early access to maternity care, Female, All ages, 2018/19



Source: Maternity Services Dataset (MSDS) v1.5

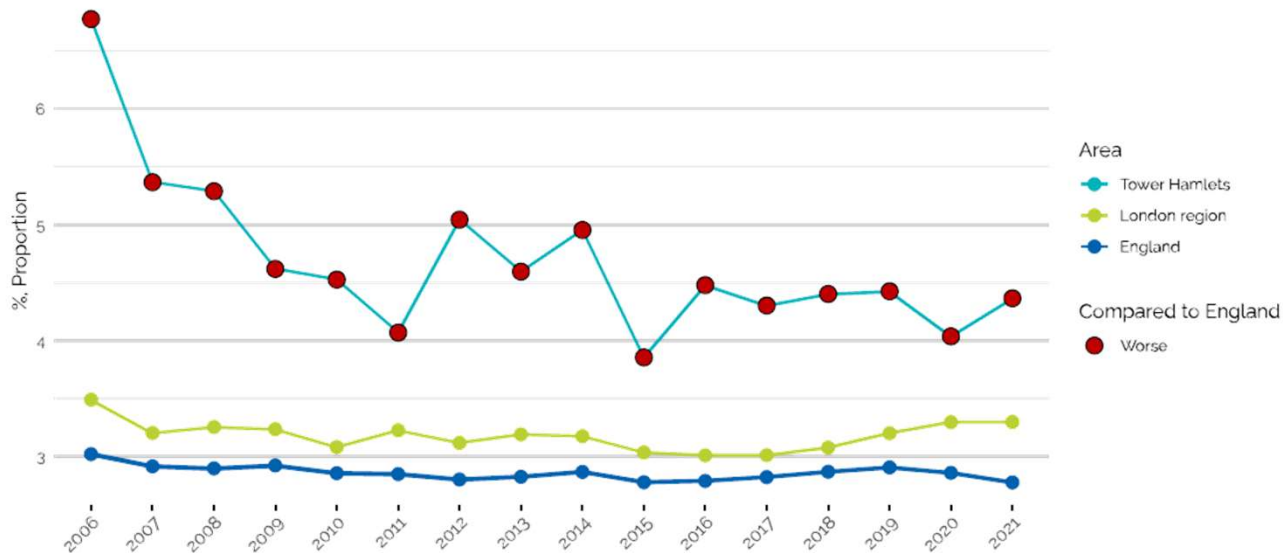
The best of London
in one borough



High low birth weight in Tower Hamlets – maternal health, early years



Figure 7: Low birth weight of term babies, Persons, >=37 weeks gestational age at birth



Source: Office for National Statistics

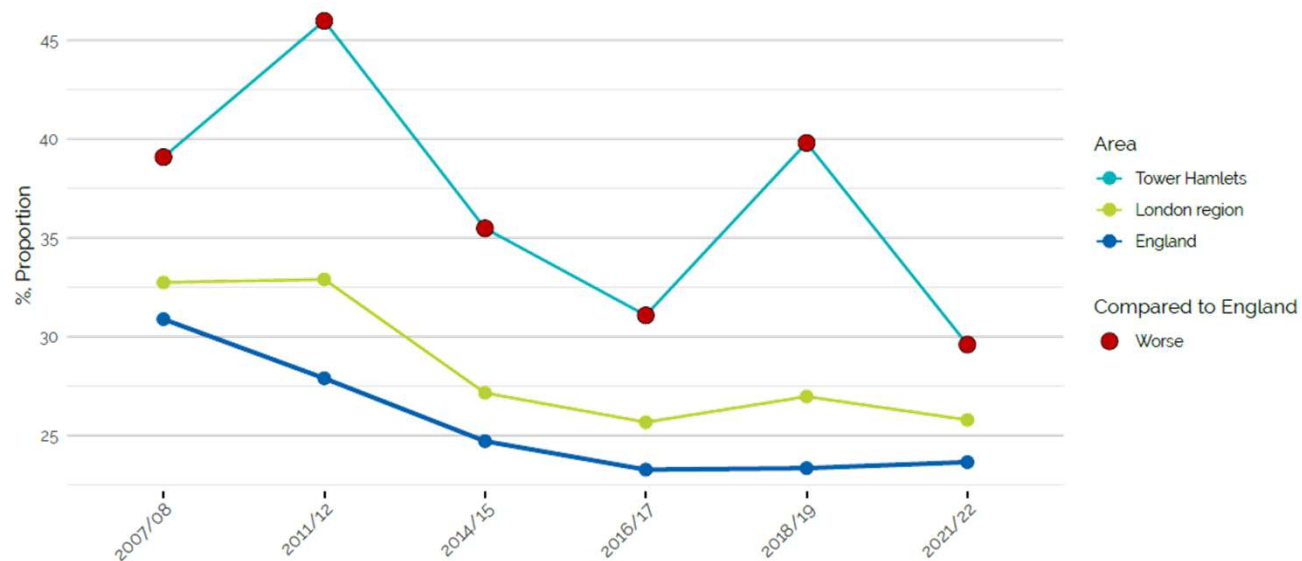
The best of London
in one borough



Poor oral health in under 5s is a perennial issue



Figure 4: Percentage of 5 year olds with experience of visually obvious dental decay, Persons, 5 yrs



Source: Dental Public Health Epidemiology Programme for England: oral health survey of five year old children (Biennial publication - latest report 2022) <https://www.gov.uk/government/collections/oral-health#surveys-and-intelligence:-children>

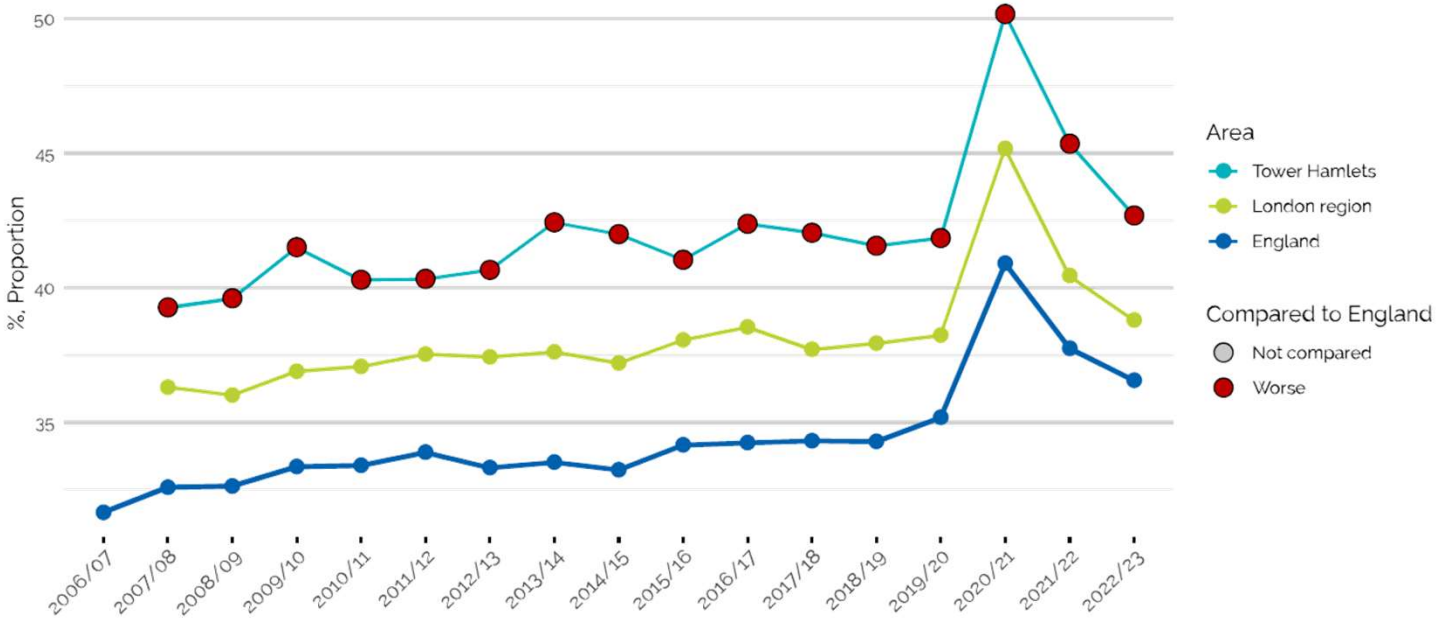
The best of London
in one borough



Tower Hamlets continues to have higher levels of childhood obesity than elsewhere



Figure 5: Prevalence of overweight (including obesity) in Year 6 (10 to 11 year olds).



Source: OHID, using National Child Measurement Programme, NHS England

The best of London
in one borough





Adults

The best of London
in one borough



There are marked inequalities in levels of long term conditions in the borough



Figure 4: Cumulative likelihood of receiving a diabetes diagnosis (cumulative age-specific diagnosis rate) by age and ethnicity for males and females in Tower Hamlets, 2022.

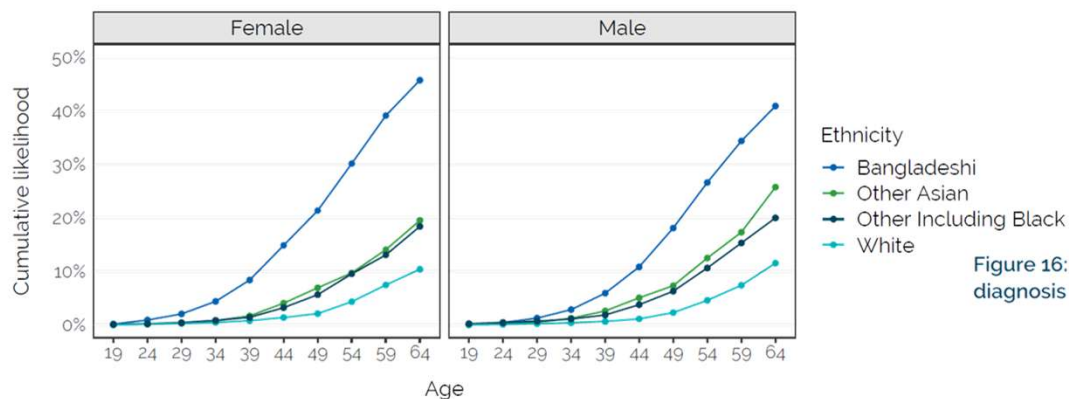
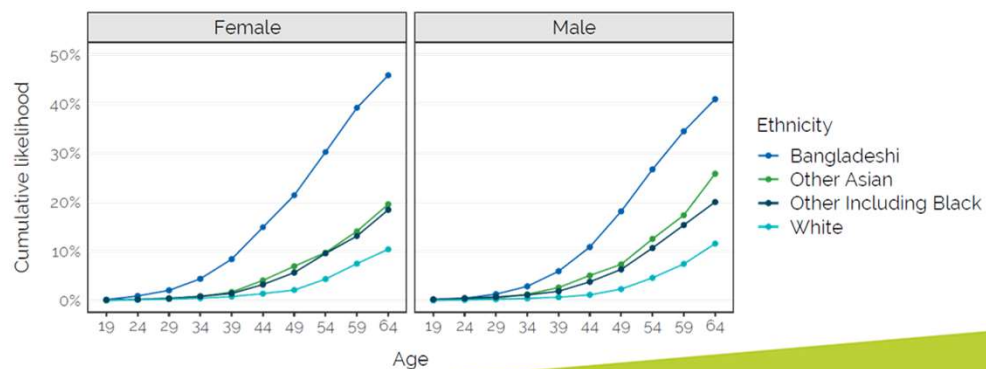


Figure 16: Cumulative likelihood of receiving a hypertension diagnosis (cumulative age-specific diagnosis rate) by age and ethnicity for males and females in Tower Hamlets, 2022.



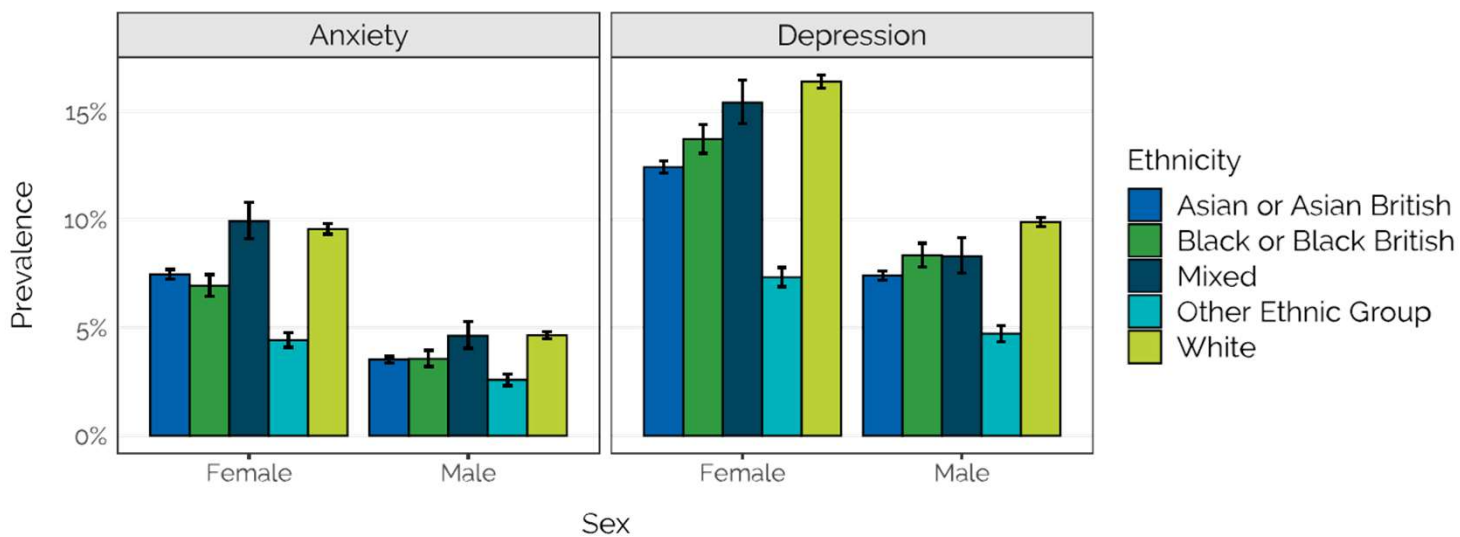
Source: ELDB (2022)



There are significant ethnicity variations in levels of diagnosed mental health



Figure 8: Crude prevalence of diagnosed anxiety and depression in adults in Tower Hamlets by ethnicity and sex, 2023.



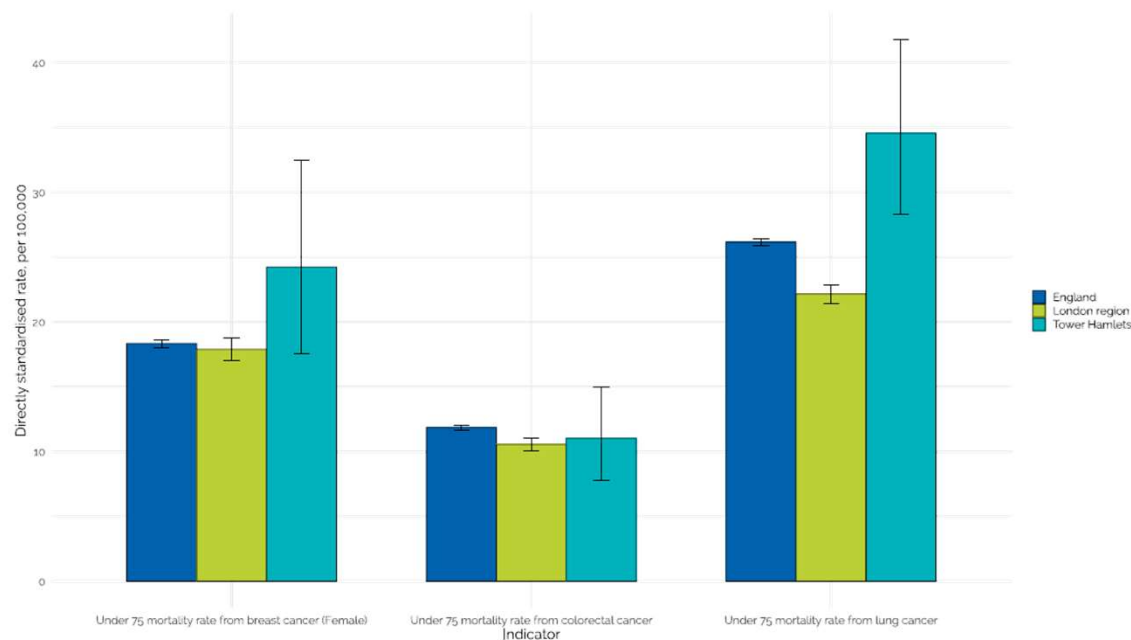
Source: ELDB (2023)



Tower Hamlets have higher death rates from lung cancer and colorectal cancer



Figure 6: Cancer mortality rate (per 100,000) comparisons for different types of cancers: breast cancer (left), colorectal cancer (middle), lung cancer (right) in Tower Hamlets, London and England for 2022.



Source: Office for Health Improvement and Disparities (based on Office for National Statistics source data)



From a high baseline, smoking levels have fallen sharply over past years



Figure 13: Trends in smoking prevalence for adults in Tower Hamlets compared to London and England.



Source: Annual Population Survey (APS)

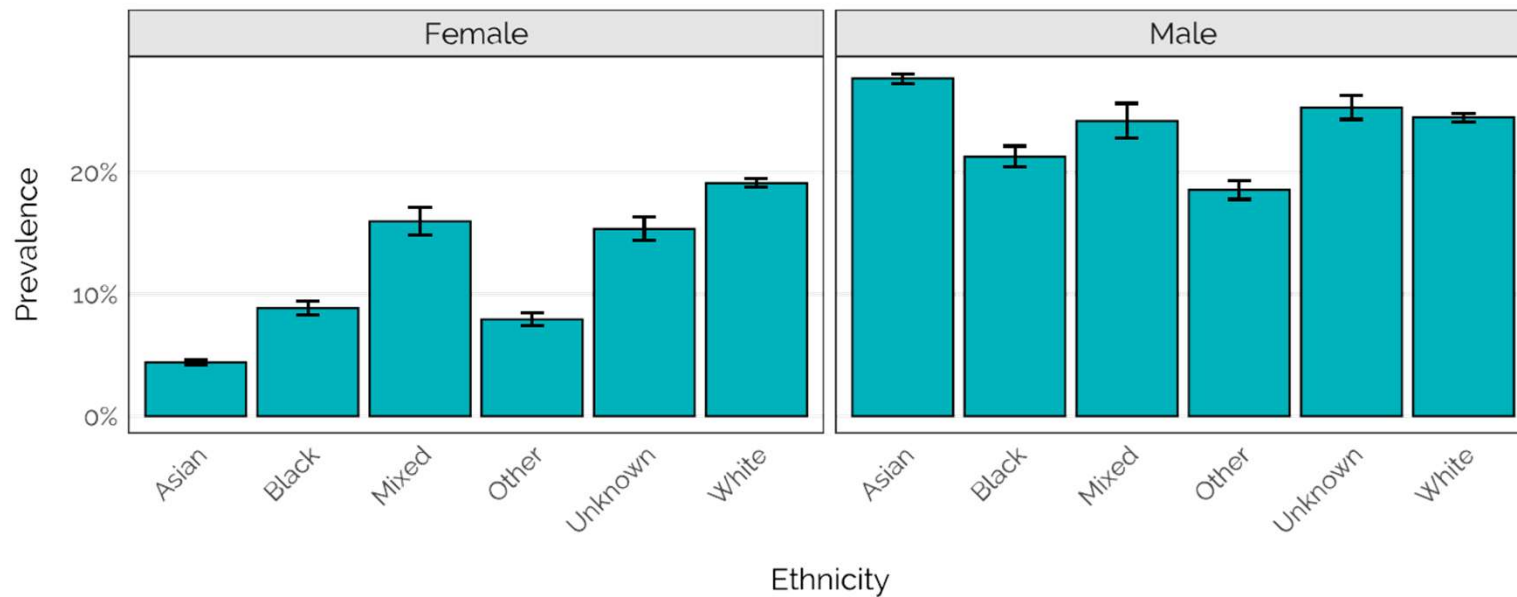
The best of London
in one borough



There are significant variations in levels of smoking by ethnicity



Figure 14: Crude smoking prevalence in adults by sex and ethnicity in Tower Hamlets, 2023.



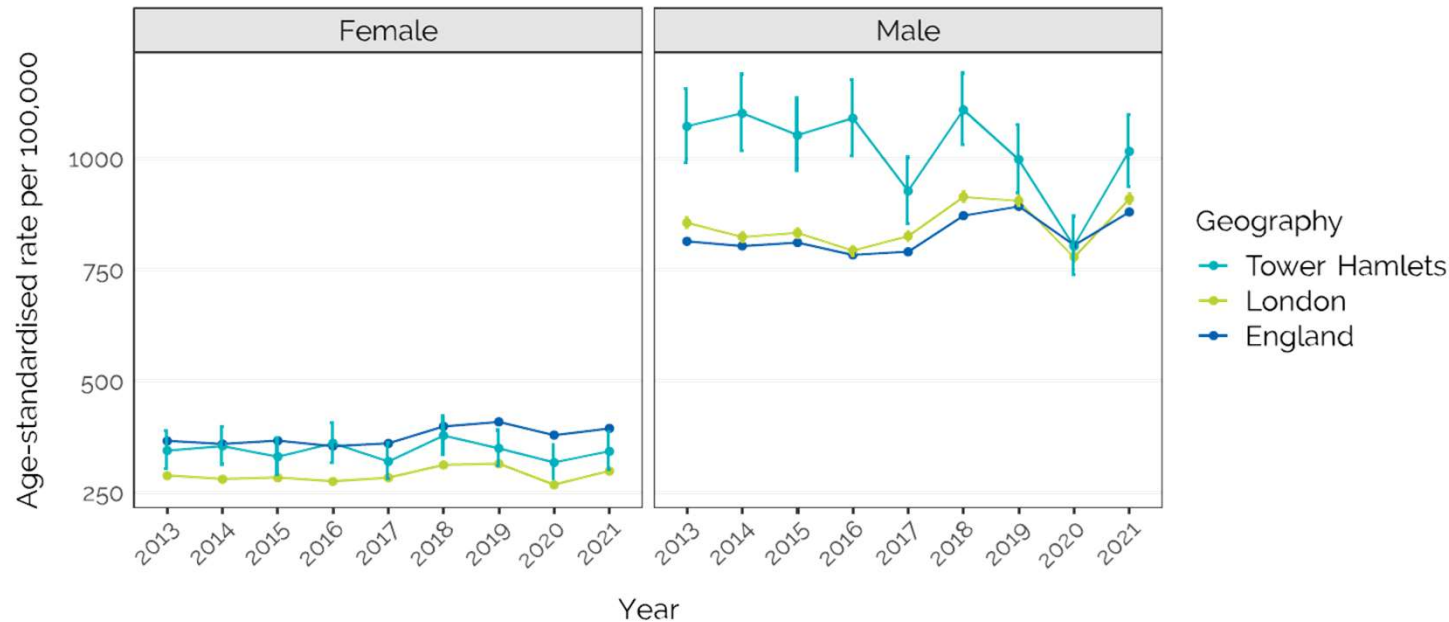
Source: ELDB (2023)



Hospital admissions for alcohol for males is the highest in London – why?



Figure 17: Hospital admissions for alcohol-specific conditions for males and females in Tower Hamlets compared to London and England over time.



Source: Hospital Episode Statistics

The best of London
in one borough



Tower Hamlets has amongst the highest levels of adults in treatment for substance misuse



Figure 22: Adults in treatment at specialist drug misuse services, rate per 100,000, in Tower Ham compared London and England.



Source: National Drug Treatment Monitoring System

The best of London
in one borough





Overall

The best of London
in one borough



Reflections



- We need to recognise how different the Tower Hamlets population is – for example:
 - How its composition will change in the future
 - Its outlier turnover
 - English proficiency in highest need populations
 - Ethnicity and inequality
 - The extent of housing need and its impact on health
- We need to reflect on how this translates into the health and care system and how we work together to address inequalities across the life course
 - Maternity
 - Early years
 - Children and young People
 - Young adults
 - Middle aged and older people

