

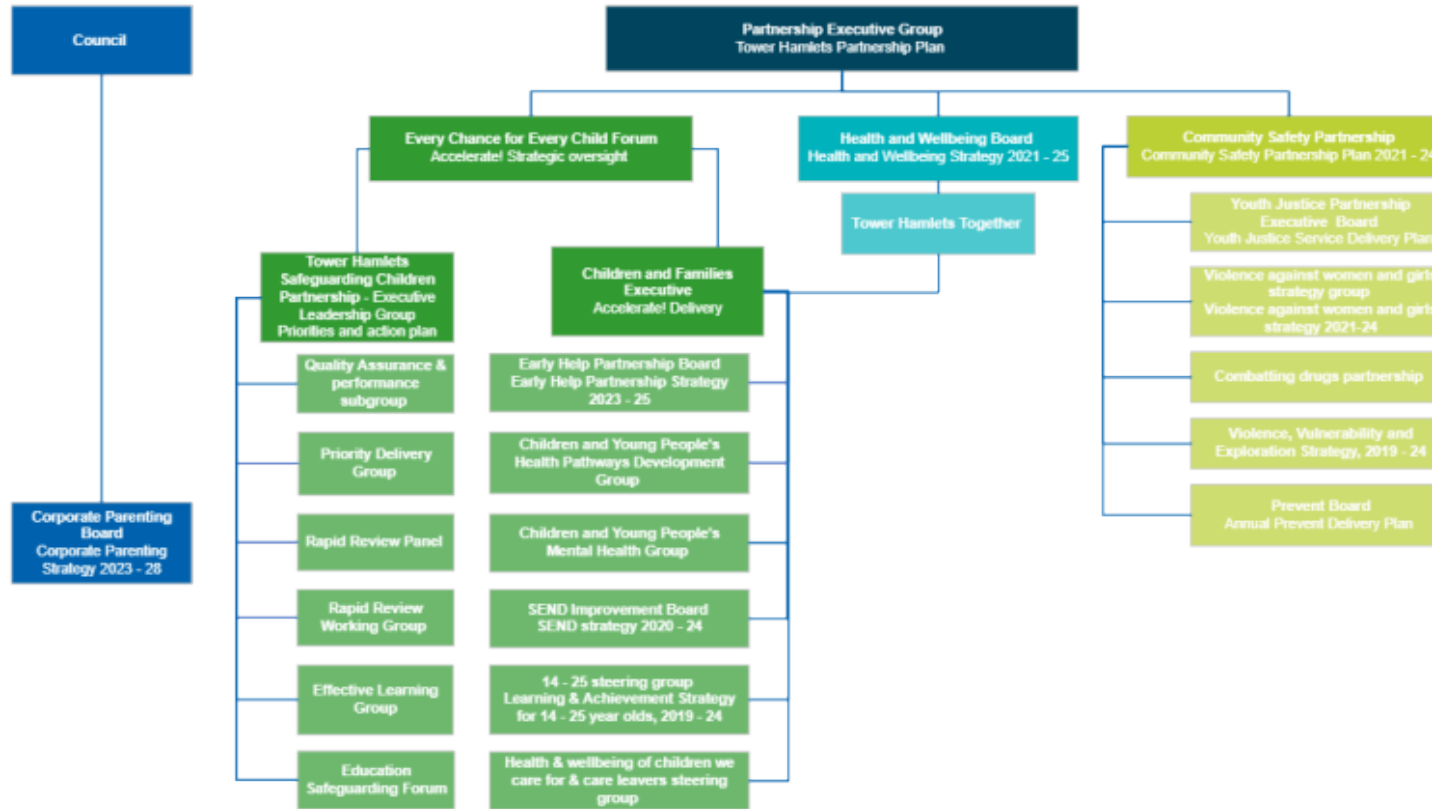
# Children and Education Scrutiny Sub-Committee

Children and Families Partnership Strategy

12 October 2023



# The Children and Families Partnership



Schools, early years settings, voluntary, community, faith organisations and many others.

Babies, children, young people and their families



# Why a Children and Families partnership?



**EVERY  
CHANCE  
for EVERY  
CHILD**



## Some examples of our collaboration

Supporting families during the pandemic

Cost of living, universal free school meals expansion, EMA and bursary programmes

Family hubs and a new approach to early help across 4 localities

Race equality in schools and governing bodies

Play charter

Asthma and wheeze collaboration

Young scrutineers in our safeguarding children partnership



# Our child population



64,250 under 18's  
84% under 16's from a non-White background, including 57% Bangladeshi heritage  
18% pupils have special educational need or disability  
301 children we care for



1 in 4 living in a low income family  
16% of households are overcrowded



% babies are born at a low weight  
52.7% of eligible two year olds take up the free education entitlement  
60.5% five year olds have a good level of development



98% of primary & 89% secondary pupils in good/outstanding schools  
66% year 6 pupils at expected standard in reading, writing and maths  
54.5% achieved grade 5+ in English and Maths  
C+ average A level result



73.5% 5 year-olds received 2 doses of MMR  
20.5% of reception age children, and 45.7% of year 6 children overweight or obese.  
29.5% 5 year olds have visually obvious dental decay



142 first time entrants to the criminal justice system per 100,000 10-17 year olds



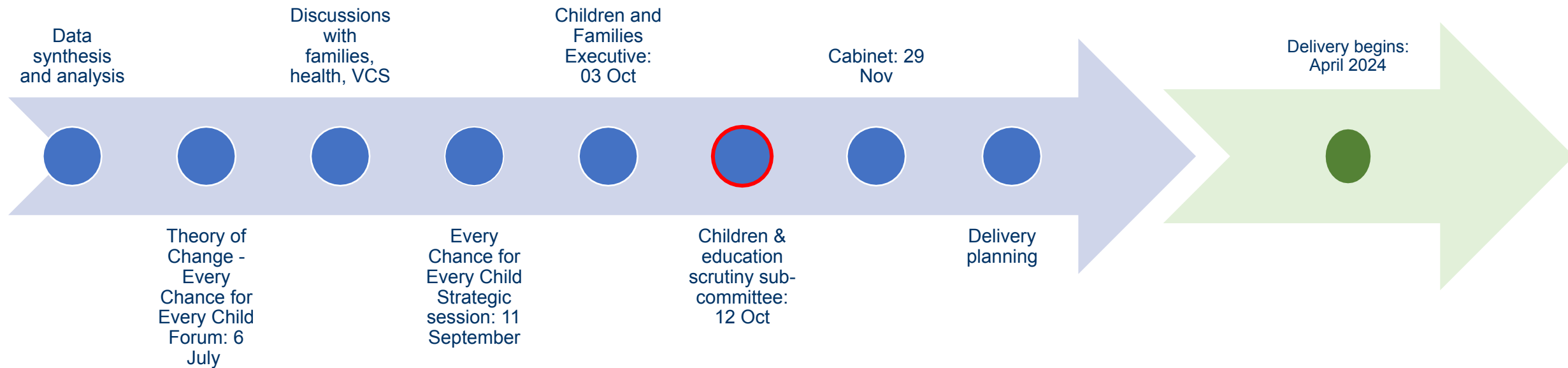
# The changing context



- A new Mayor and an administration which is ambitious for children and young people and committed to tackling the cost of living and housing crisis
- The pandemic and cost of living crisis: a large and lasting impact on children, families and our workforce
- Our strengthened partnerships with each other and engagement with families and children
- Policy changes in children's social care and SEND provision
- New developments in integrated locality working and Family Hubs
- A new health and social care partnership landscape



# Developing a new strategy



# What children and young people have told us



## Primary pupils

(Every Chance for Every Child Takeover January 2023)

**Online safety, including mobile phones** (Scams, fake websites, accessing content without adult supervision – importance of education for children and parents.)

**Safer communities** (More cameras, perpetrators are sad/depressed – more enrichment would help with this)

**Emotional wellbeing**

**Reducing pollution**

## Secondary Pupils

(Every Chance for Every Child Takeover January 2023)

**Mental Health** (Removing stigma (sometimes cultural), offer is rich but hard to navigate and can seem disjointed, establishing trusted relationships very important, suggestion for training to be co-produced with YP)

**Bullying** (Peer pressure, reputations, importance of/encouraging kindness, trusted adults.)

## Youth Council

(Feedback on priorities to Children and Families Executive April 2023)

Child poverty

**Mental health services** – feeling dismissed, access, online appts a barrier

Cultural capital

Standard of social housing





# Our proposed vision and values



*A child-friendly borough where children and young people from all backgrounds thrive, achieve their best, have opportunities, and are listened to.*

- Child-focused
- Working with the whole family, with a collaborative and co-production approach;
- Strengths-based and trauma informed
- Recognising and working actively to combat discrimination and racism



# Priority outcomes



# Delivering the strategy

