

## APPENDIX 2

### SELECTION OF APPLICATION PLANS AND IMAGES



01  
002

Aerial View from North

---



03  
002

Aerial View East

---



02  
002 Aerial View from South

---



04  
002 Aerial View West

---



*Rear of Walker House from Car Park*



*View from Boundary Street of perimeter wall with Walker House on left and Shipgrave House beyond*



*View of perimeter wall as existing from within Wargrave House amenity space with Leyton house in background*



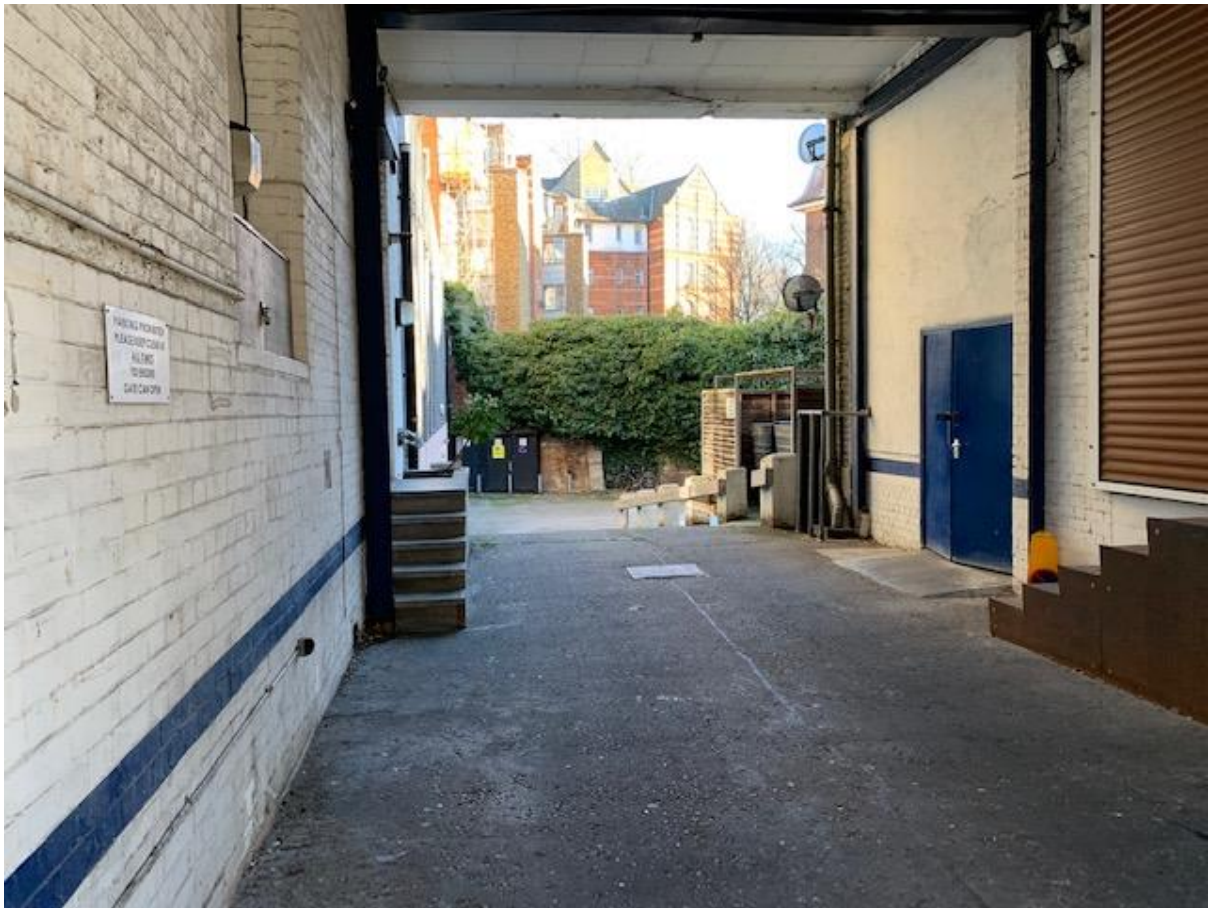
*View of perimeter wall as existing from within Shipgrave House amenity space with Walker house in background*



*View of perimeter wall as existing from within carpark with Wargrave House behind*



*22 Calvert Avenue premises windows*



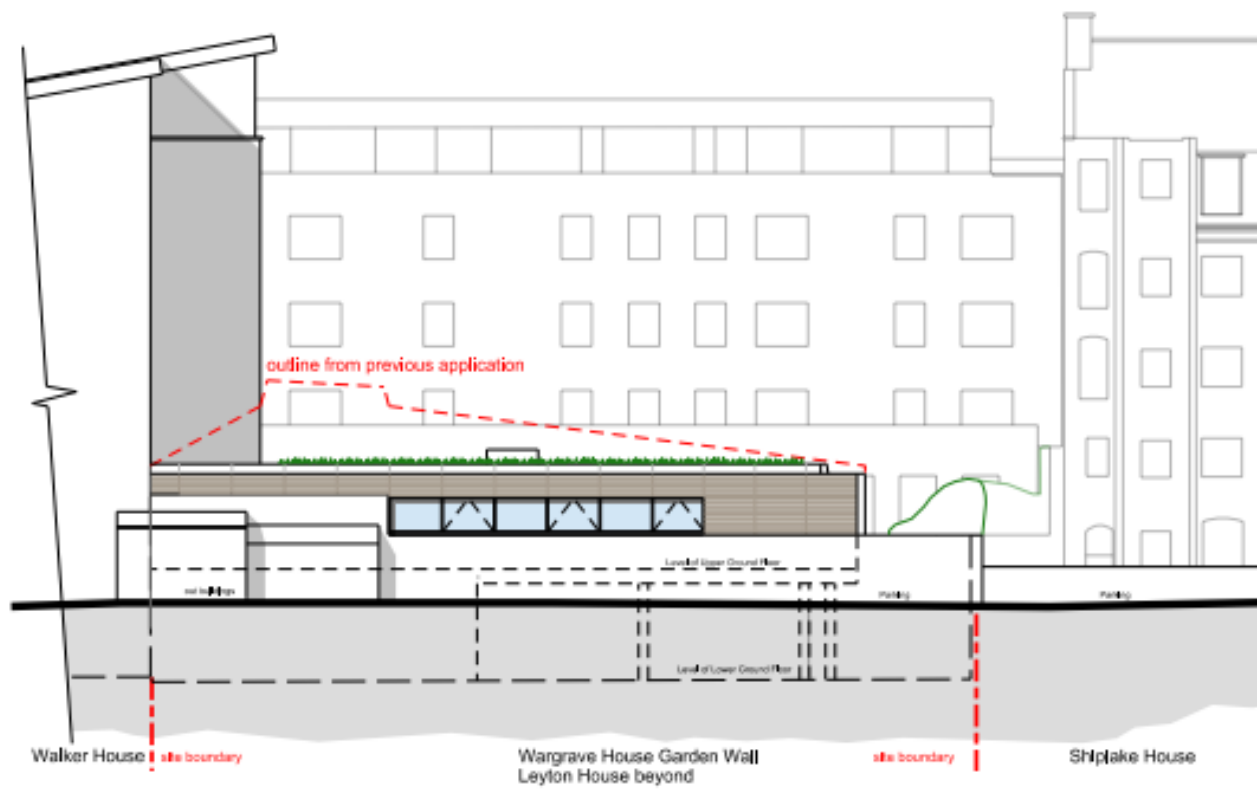
*View down access ramp from gateway entrance*



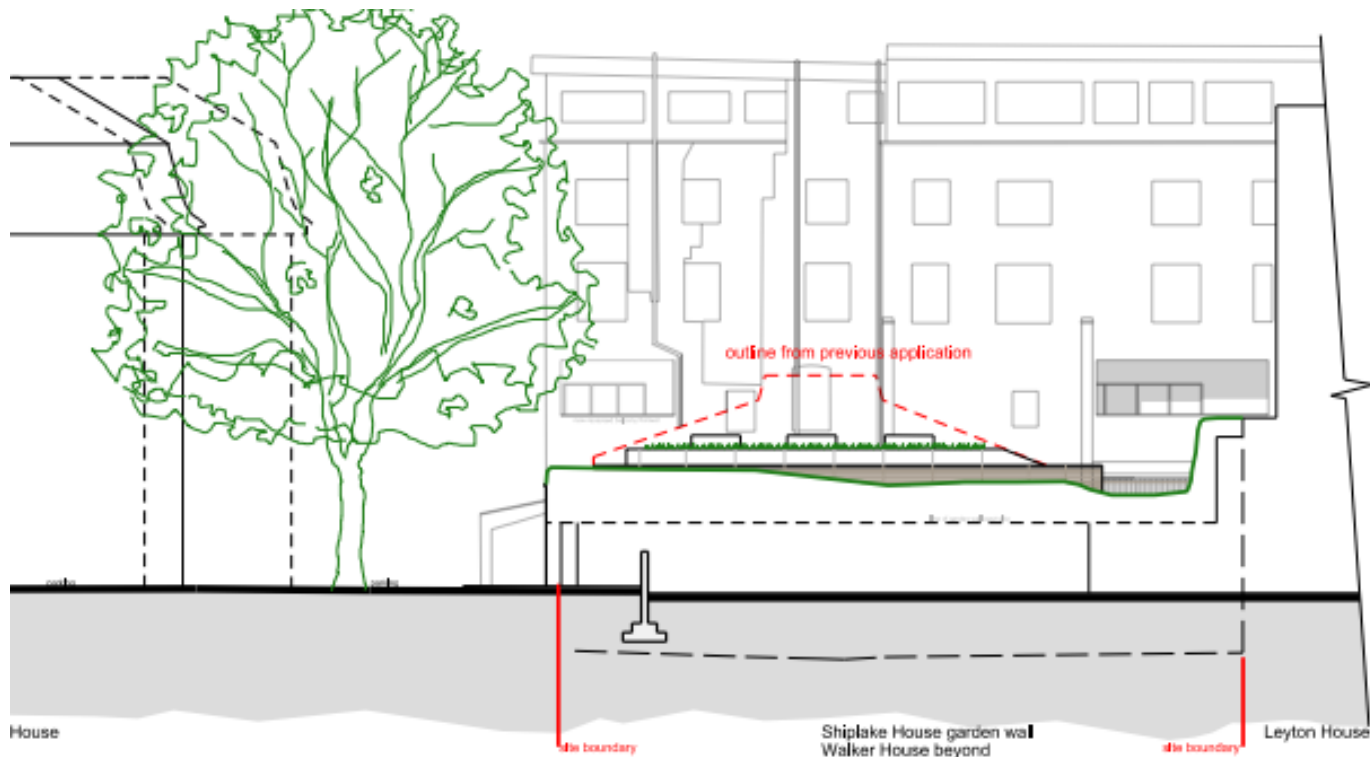
*Existing refuse store serving 22 Calvert Avenue*



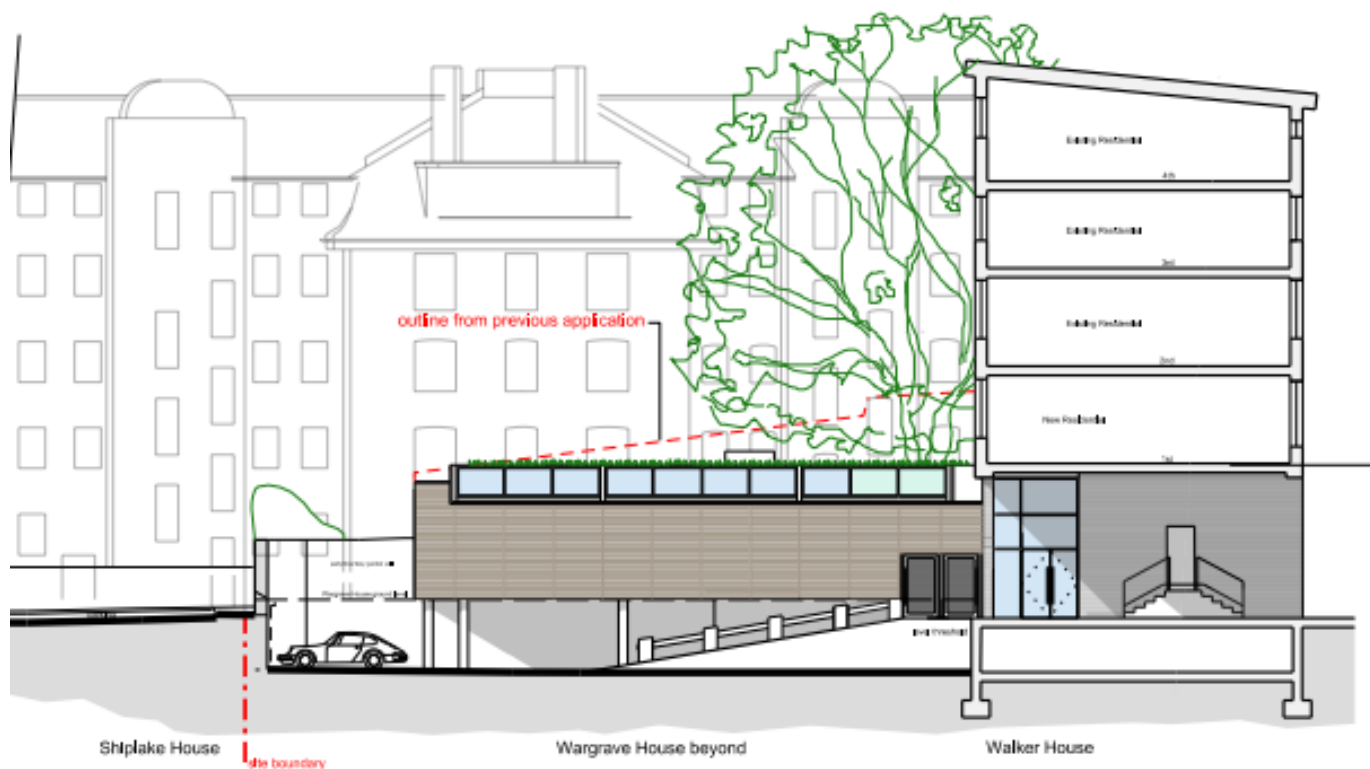
01  
040 East Elevation  
1:250



03  
040 South Elevation  
1:250



02  
040 East Elevation with party/boundary wall  
1:250



04  
040 North Elevation  
1:250