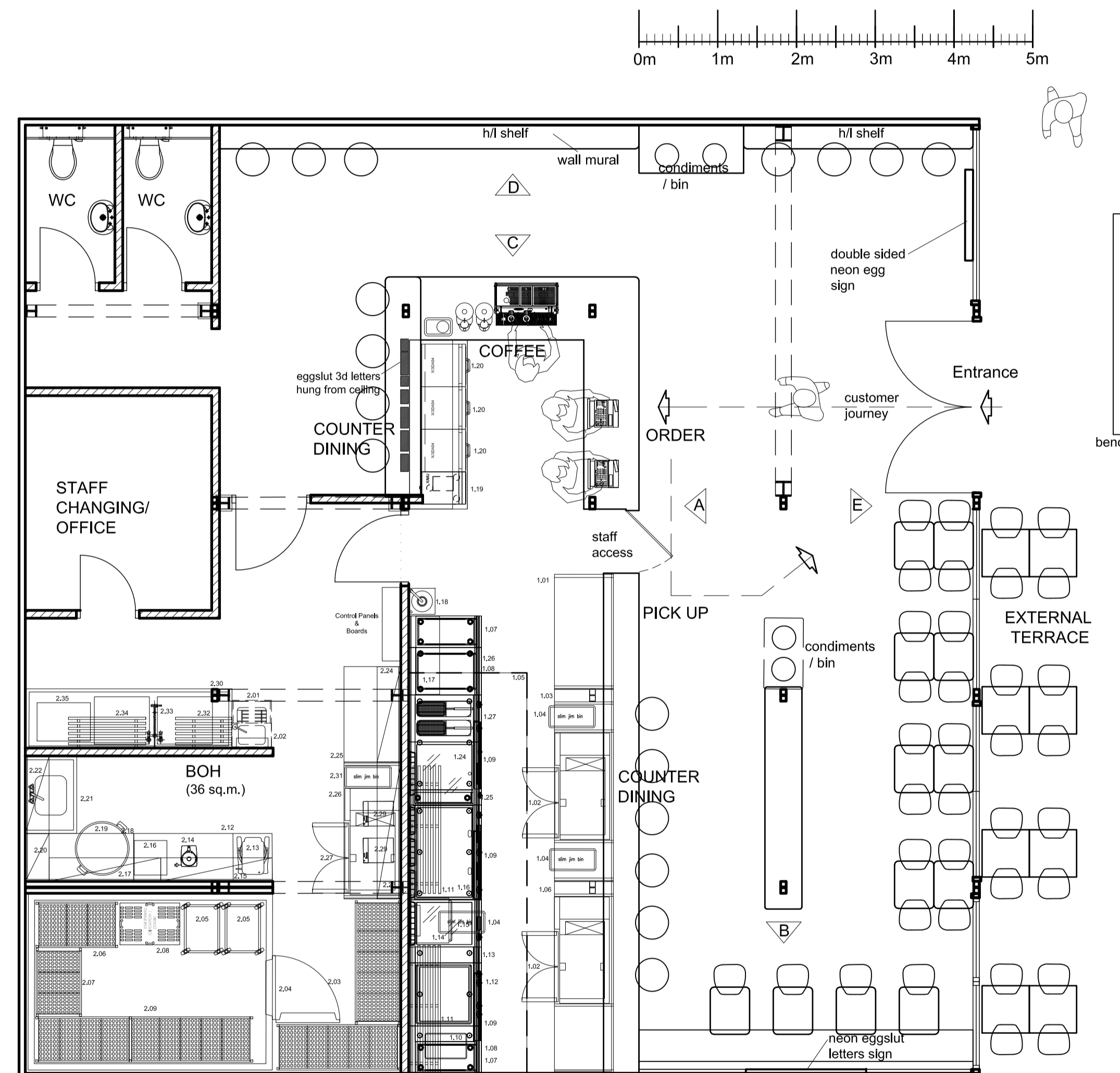


**Copyright.** This drawing and design and all the information contained therein is the sole copyright of 360 International Group, and reproduction in any form is forbidden unless permission is obtained in writing.  
 No dimensions to be scaled from this drawing. All Contractors must visit site and be responsible for taking and checking all dimensions relative to this work. The Designer must be advised of any discrepancies in writing.



**Ground Floor Plan as Proposed.**  
 Internal Covers: 39  
 External Covers: 20

Rev.F. 9Sep19. New structural columns indicated, toilet wall moved. SRC.  
 Rev.E. 23Aug19. bin units and external furniture relocated; external doors omitted; catering equipment added; following clients instructions. SRC.  
 Rev.D. 19Aug19. Furniture, doors, minor amendments following clients meeting. SRC.  
 Rev.C. 15Aug19. Shelves / signage relocated. SRC.  
 Rev.B. 12Aug19. Entrance relocated; furniture updated. SRC.  
 Rev.A. 8Aug19. Door between open kitchen and BOH relocated; terrace furniture reverted to previous layout. SRC.  
 Rev. Date. Notes. Amended by.

**360 International Group**  
 DISCOVER : DESIGN : DELIVER  
 99a Mews Street, St Katharine Docks, London. E1W 1UG  
 Tel: 020 7112 7548 www.360intGroup.com

Job title	
<b>eggslut</b> Boxpark, Shoreditch.	
Drawing title	
Plan as Proposed.	
Scale	Drawing No.
1:50@A1	959/02F
Date	
27Jun19	
Drawn by	
Steve Curtis	