

# Tower Hamlets Covid-19 Update

Update to Overview and Scrutiny Committee  
22nd March 2021



# Local infection & vaccination picture

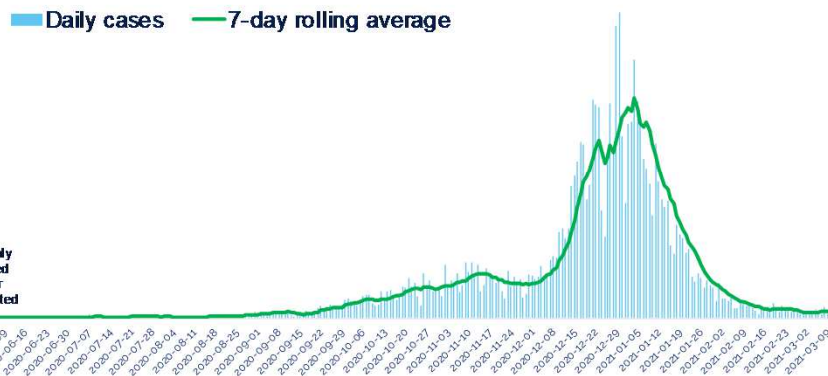


## TOWER HAMLETS WEEKLY COVID-19 STATISTICS



Data shown is for the period 04-03-2021 to 10-03-2021

Number of cases:  
There have been a total of 28,291 cases since 10th March 2020.



### What does this mean?

Although our incidence rates have now fallen below 50 per 100,000, case levels remain high for all age groups.

Vaccination delivery remains a priority particularly among populations with lower uptake or limited access to sites.

Anyone with symptoms can get tested and we have increased our testing capacity in the borough making it easier for all our residents to get tested.

Positivity rates (the proportion of people who take a test who are positive) have fallen in most parts of the borough but remain high for London - suggesting there remains an ongoing risk of transmission of Covid-19 in the community.

The road out of lockdown continues and we will continue to monitor the data, mapping our progress along this route.

We urge you to stick to public health guidance over the next coming weeks, and keep yourselves, your loved ones and Tower Hamlets safe.

**Somen Banerjee**  
Director of Public Health.

- Case rates appear to be plateauing around 30-35/100,000
- Lower rates in over 59s
- 65,000 residents have now been vaccinated with their first dose
- Disparities in uptake by ethnicity reducing but persist
- Variations in uptake by practice
- Testing rates remain relatively low

Number of cases per 100,000 population (positive)	All ages incidence rate (weekly rate per 100,000)	Over 59s incidence rate (weekly rate per 100,000)	Individuals tested (daily rate per 100,000)	Positivity rate (weekly percentage)	Population aged 16+ vaccinated (first dose)	Population aged 65+ vaccinated (first dose)
<b>This week:</b> 35.1 vs 40 in London	<b>This week:</b> 16.5 vs 25.1 in London	<b>This week:</b> 296.8 vs 344.9 in London	<b>This week:</b> 1.9% vs 1.8% in London	<b>This week:</b> 21%	<b>This week:</b> 78%	
<b>from last week:</b> 36	<b>from last week:</b> 33.1	<b>from last week:</b> 262.4	<b>from last week:</b> 2.3%	<b>from last week:</b> 19%	<b>from last week:</b> n/a	

London Explorer (LHE) and Regional Situational Awareness Report for London (RHE)  
The most recent 4 days are excluded from the calculations of rates and moving averages. Data shown is for specimens taken between 04-03-2021 to 10-03-2021 and the comparison is for the 7-day period of 25-02-2021 to 03-03-2021



# How do we know the vaccine is safe?



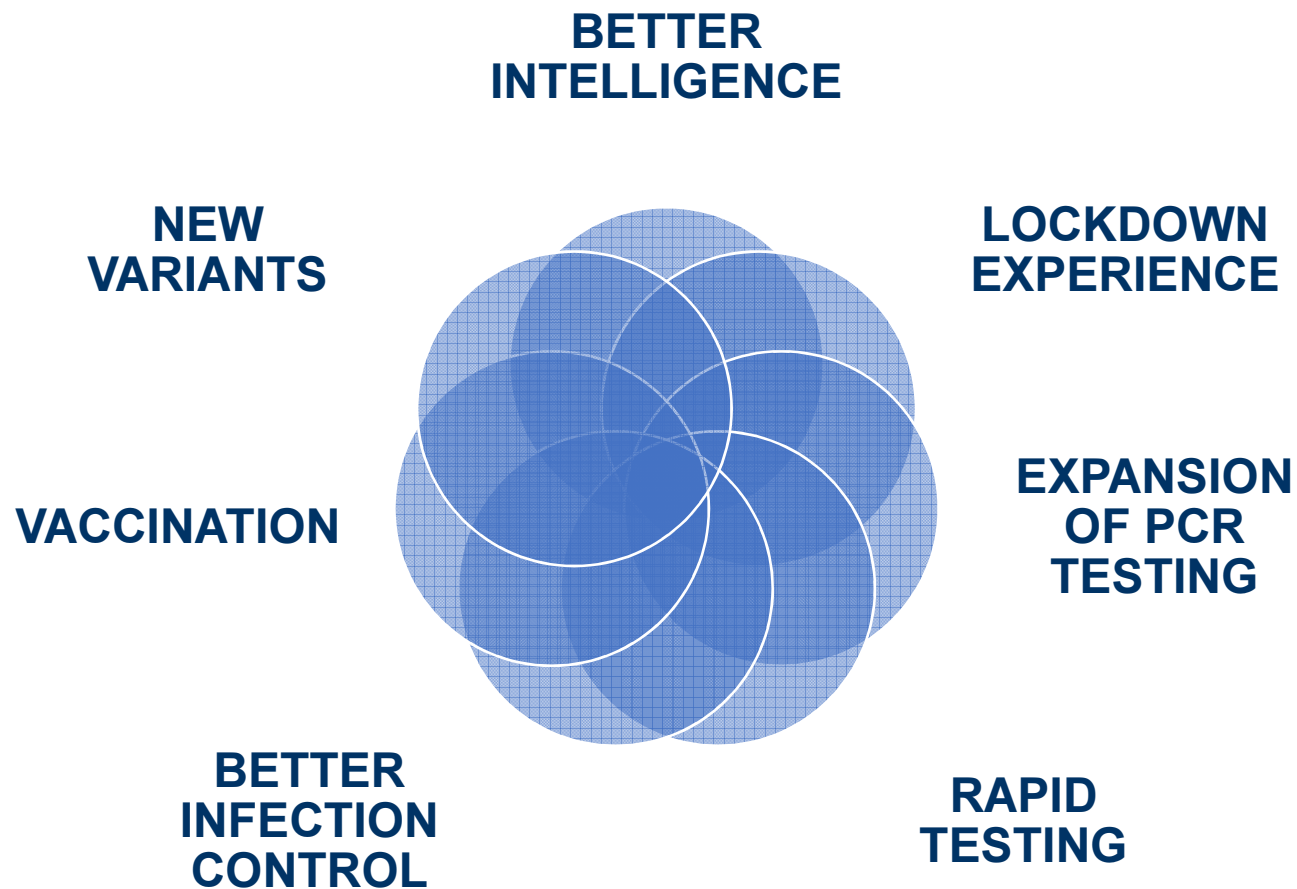
- Before coming on to market, vaccines underwent large scale trials
  - Pfizer - 44,000 people
  - AstraZeneca - 20,000 people
- Speed was due to unprecedented urgency, massive research investment and prior knowledge but it did not cut corners
- The Regulator then reviewed all the evidence and concluded it was safe
- 24 million people have been vaccinated in England since approval and the side effects are as expected from the trials
- AstraZeneca safety
  - 0.0001% of people who have AZ vaccine have reported blood clots
  - The link is unproven as the % is same in vaccinated and unvaccinated
  - 4% of people who have COVID who are hospitalised



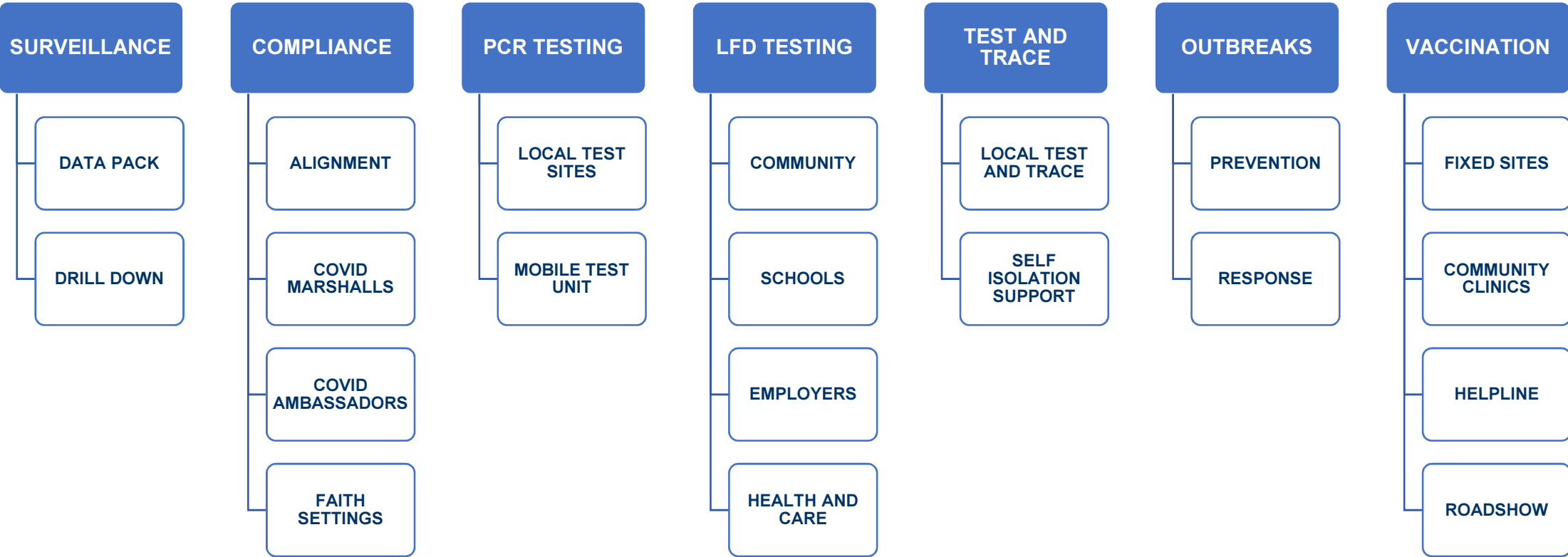
# Local Outbreak Management Plan update



Since June 2020



# What we have in place

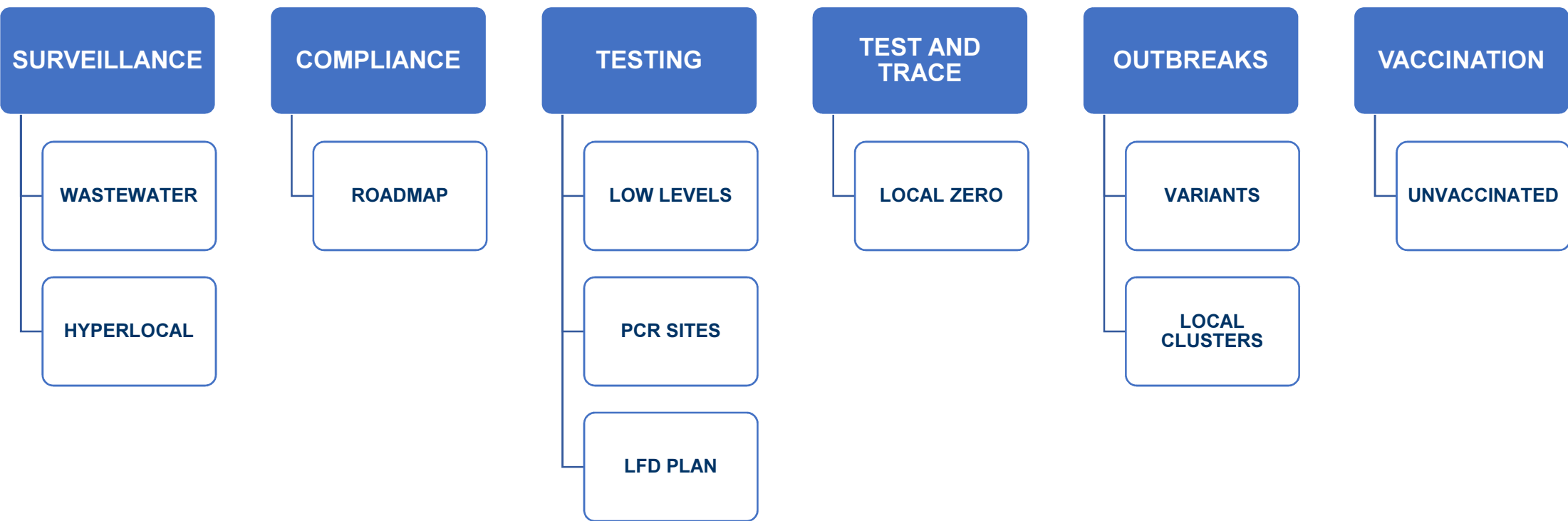


## COMMUNITY ENGAGEMENT AND INEQUALITIES

COVID CHAMPIONS, OUTREACH, SMALL GRANTS, VOLUNTARY SECTOR RESILIENCE, FAITH SETTINGS, YOUNG PEOPLE



# Moving to the next phase



COMMUNITY ENGAGEMENT AND INEQUALITIES

LIVING WITH COVID – FROM EPIDEMIC TO ENDEMIC



# mescales

Government lockdown announcement  
Feb 2021:

- Schools colleges & care are re-open – before- & after-school clubs
  - Rule of six or two households meeting outdoors allowed inc private gardens
  - Only one person from another household in outdoor spaces allowed
  - Outdoor sports (tennis/football/basketball courts o/d pools re-open)
  - Only one home residents allowed one visitor
  - Minimise travel, no holidays
  - Only 30 people in buildings (15)
  - Stay at home order ends
- (from 8 March) (from 29 March)

- All retail re-opens
- Outdoor hospitality re-opens
- Outdoor settings (alcohol take-ways, beer gardens, zoos, theme parks) re-open
- Indoor leisure (gyms, pools) re-opens
- Libraries and Community centres re-open
- Self-contained holiday accommodation re-opens
- Continue to WFH if you can

- 30 person limit outdoors
- Two households can mix indoors
- Indoor entertainment and hospitality re-opens
- Indoor events - up to 10,000 or 50% capacity
- Outdoor seated events - up to 10,000 or 25%
- Up to 30 people can attend most significant life events
- International travel - STR
- Hotels etc. can open
- Continue to WFH if you can

- Remove all legal limits on social contact
- Remaining sectors re-open – e.g. nightclubs
- No limits on weddings, funerals
- Larger events allowed



Step One - from 8 March

Step Two - from 12 April

Step Three - from 17 May

Step Four - from 21 June



Thank you

