

# Bow Liveable Streets

## Consideration of exemptions for bus gateway and timed closure

10/12/2020





### Traffic data

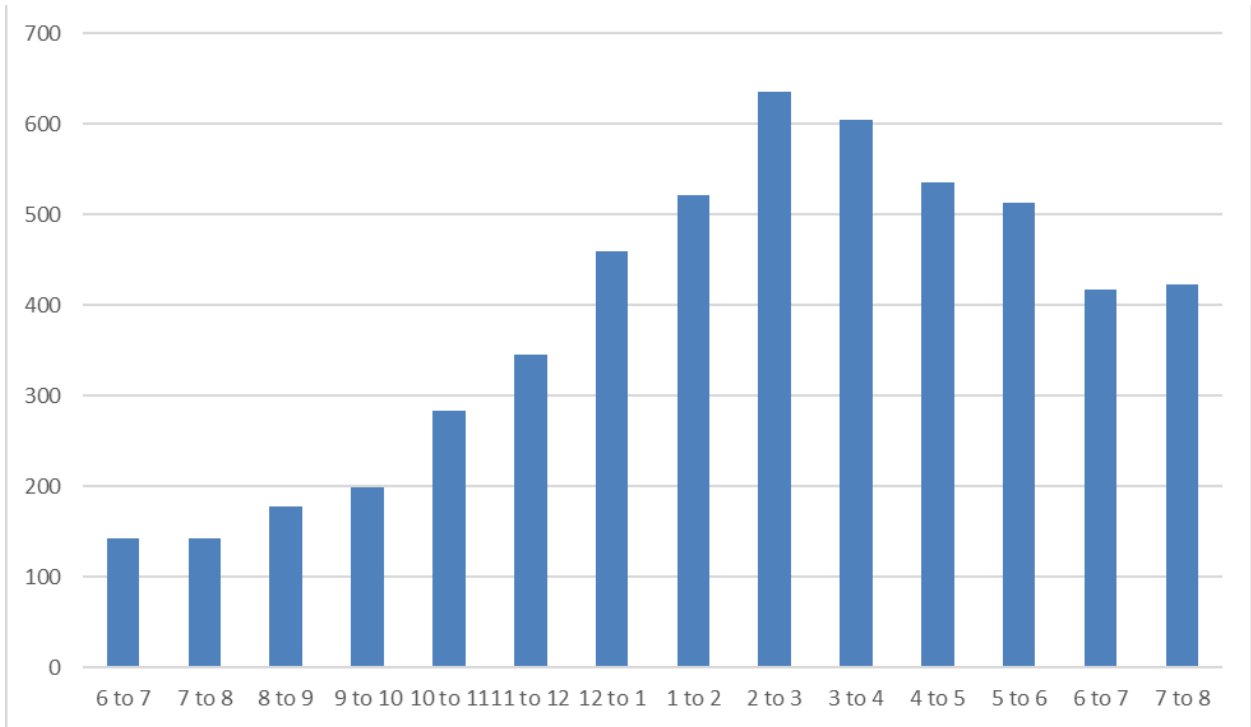


Figure 1 – Through traffic in Bow from west (Grove Road) to east (A12)

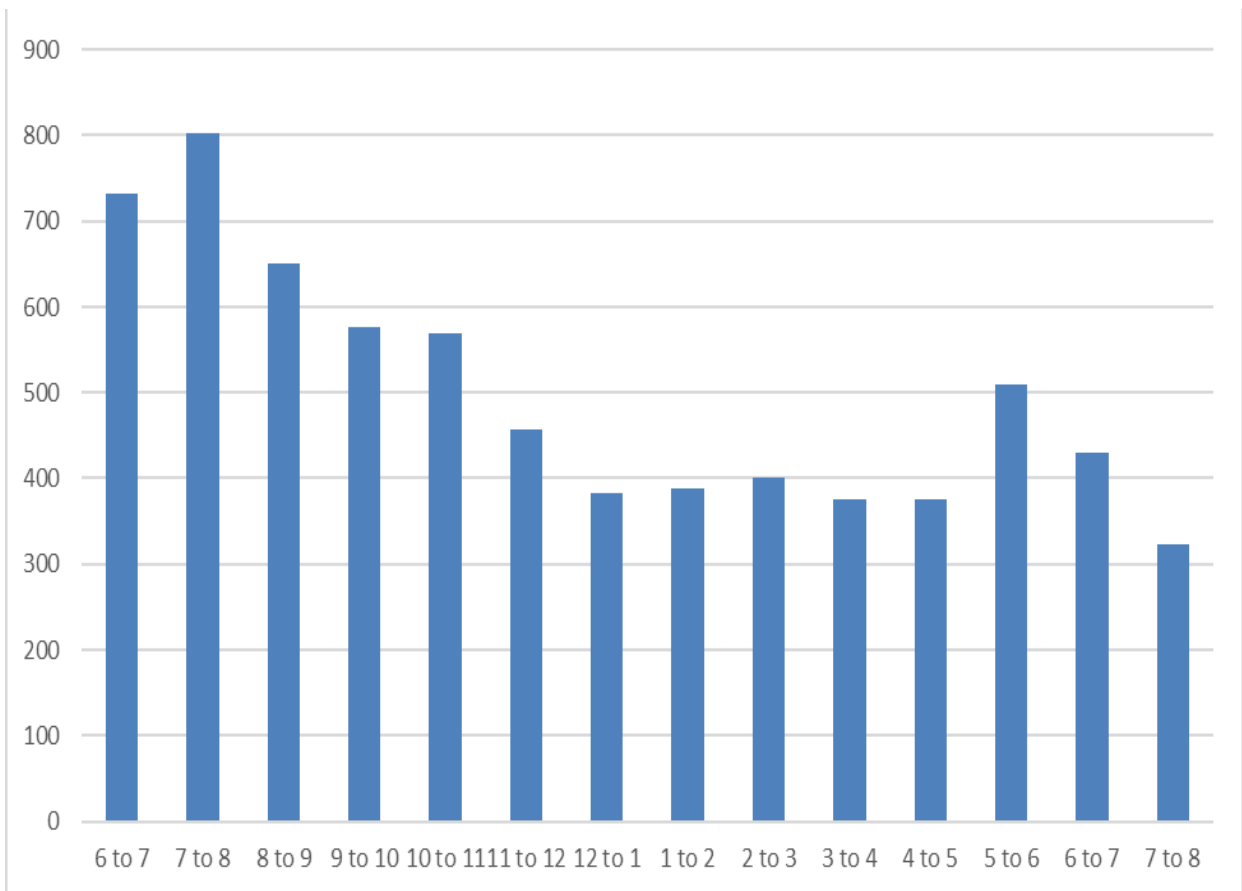


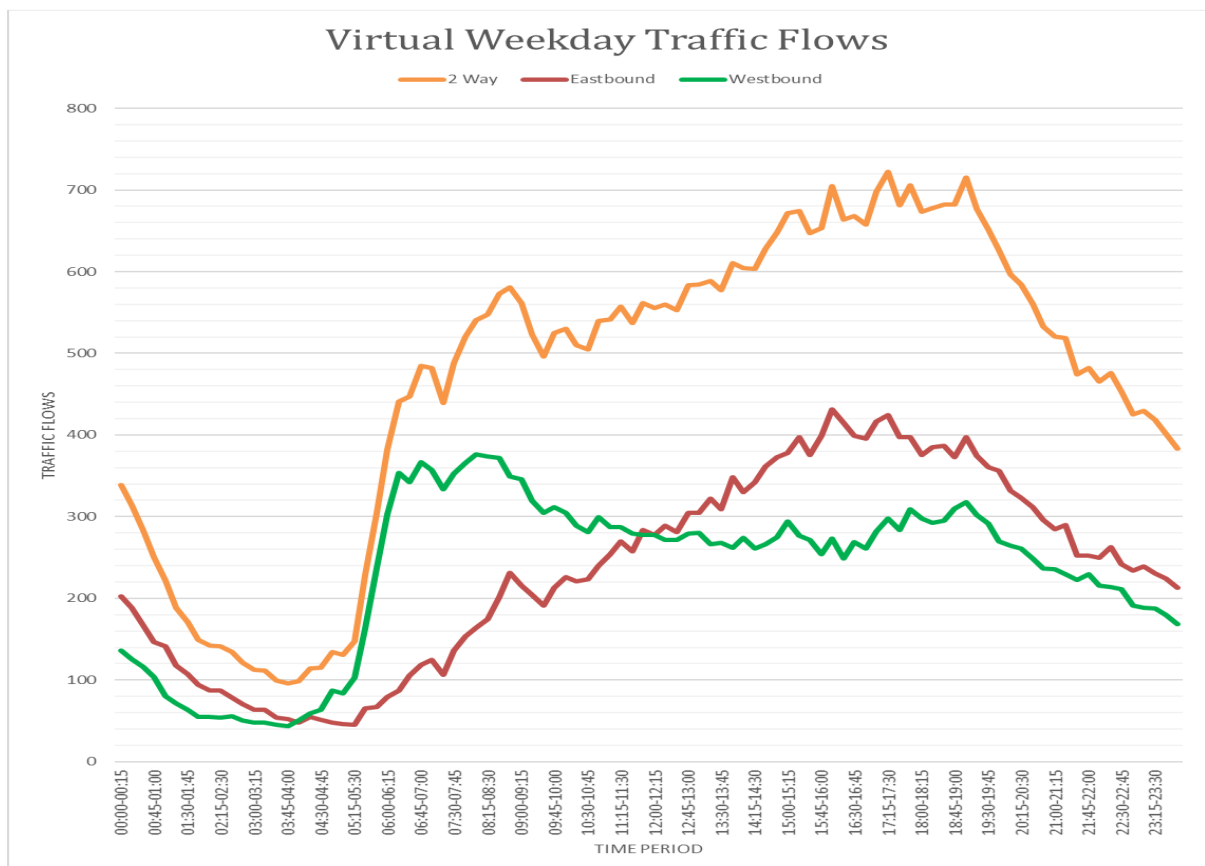
Figure 2 Through traffic in Bow from East (12) to West (Grove Road)

Bow Liveable Streets

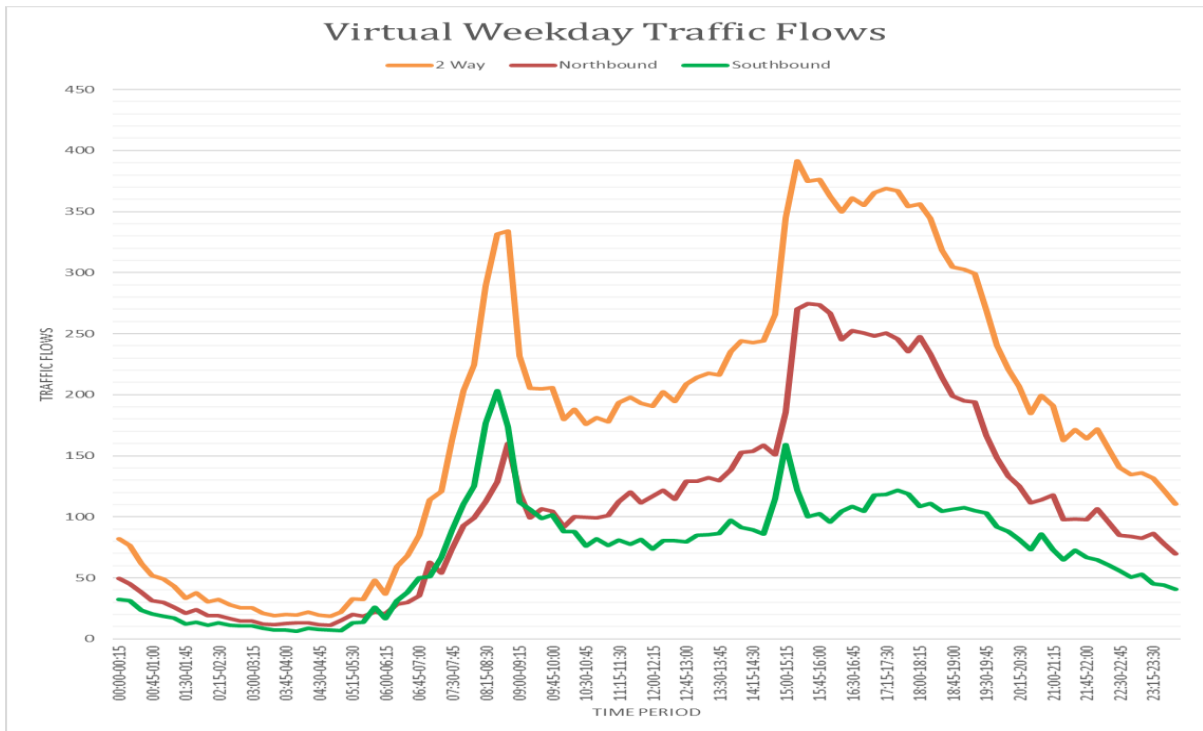
	Eastbound/ Northbound (veh/day)	Westbound/ Southbound (veh/day)	Two-Way (veh/day)	85 <sup>th</sup> ile Speed
Tredegar Road	6,961	6,941	13,452	23.7 mph
Coborn Road	2,620	1,705	4,325	24.7 mph
St Stephen's Road (Tredegar Road to Roman Road)	5,070	5,246	10,246	23.1 mph
Roman Road (St Stephen's Road to Grove Road)	5,636	5,566	11,202	25.5 mph
Old Ford Road (Grove Road to St Stephen's Road)	9,230	7,222	16,452	27.1 mph
Old Ford Road (St Stephen's Road to Parnell Road)	8,600	7,063	15,663	24.4 mph
Parnell Road	5,347	6,778	12,125	24.7 mph

Figure 3 Traffic volumes and speed in Bow

Roman Road

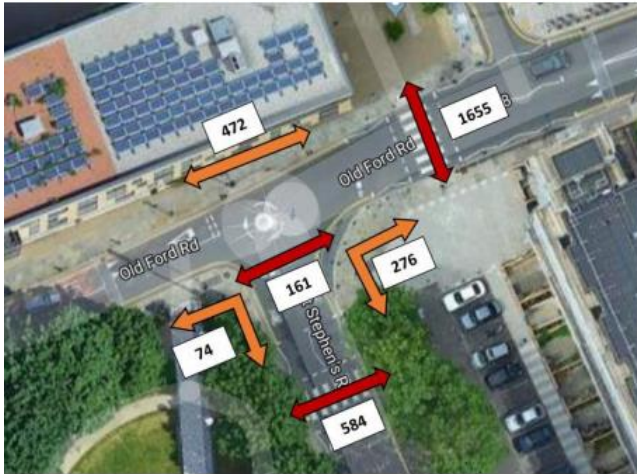


Coborn Road

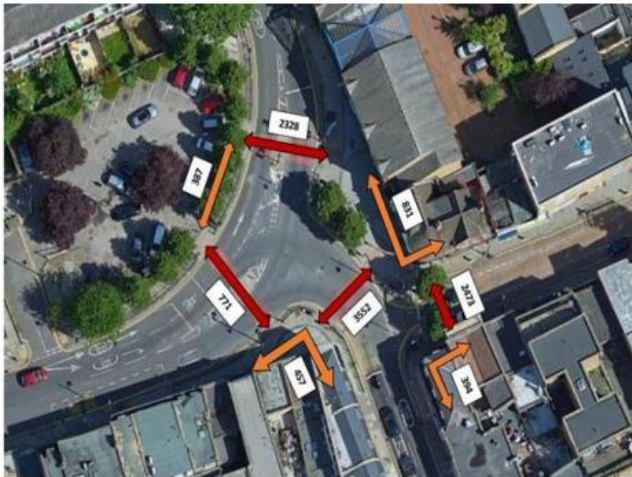


**Pedestrian data**

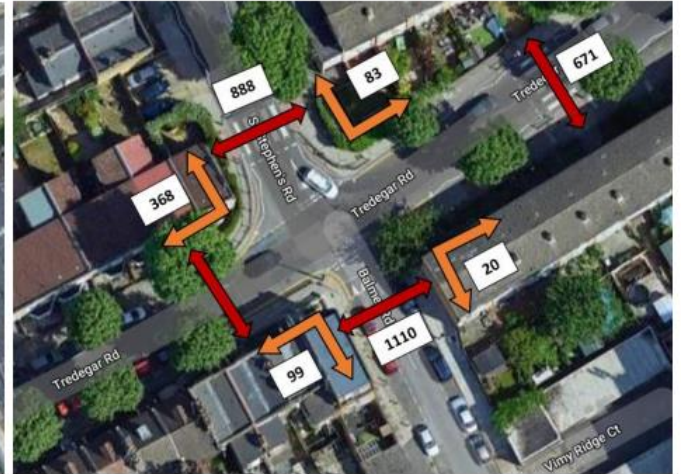
Old Ford Road/ St Stephen's Road



Roman Road/ St Stephen's Road



Tredegar Road/ St Stephen's Road



Coborn Road Underpass



Bow Liveable Streets

