

Community Safety Partnership Plan 2021- 2024

Overview and Scrutiny Committee 1st March
2021



Introduction from Cllr Islam



Community Safety Partnerships are required under the Crime and Disorder Act (1998) to ensure a strategic plan is in place to address crime and disorder locally.

The current plan ends on 31st March 2021, and a new plan has been developed for 2021-2024.

The plan presents the CSP priorities, and approach to tackling crime and disorder in Tower Hamlets considering the context, challenges and opportunities we face. The Plan also outlines the Partnership's delivery mechanisms including key projects and subgroups.

CSP Plan has been developed against a socio-economic background that includes impacts of the Covid 19 Pandemic and a spotlight on inequalities and discrimination highlighted by the death of George Floyd and the Black Lives Matter movement.



How we developed the plan



Crime and Disorder Strategic Assessment

- The plan is supported by a **detailed strategic assessment** that draws on data from across the partnership to identify trends, patterns, and drivers of crime and anti-social behaviour. The production of this Strategic Assessment is a **statutory requirement** under the Police and Justice Act 2006. It replaces the previous requirement to carry an audit every three years by the need to be more responsive to changing situations through annual assessments of the direction of strategic work.

4 Stakeholder Steering Groups

- **Four steering group meetings with CSP organisations** were held throughout the plans development. These reviewed achievements and remaining challenges from the previous plan, and discussed new priority areas, what the “big ticket” areas are, what is out of scope, areas the strategic assessment didn’t cover

Consultation and Engagement

- The plan is also informed by a **wide-ranging consultation and engagement** with **partners** that was carried out over July-December, and with **community groups and Tower Hamlets residents**



What residents told us

- ASB is the number one concern of residents, significantly more so than crime
- Visible drug use and drug dealing (including Nitrous Oxide) were the main ASB concerns
- Noise nuisance is a key concern. Groups of youths coming into their local area and congregating late into the night, often driving cars dangerously and revving engines loudly
- Rough sleeping in the borough is an issue people want reduced
- Earlier intervention needed to help prevent young people being exploited and to prevent them becoming addicted to drugs and alcohol



Addressing the Drivers of Crime and Underlying Factors that Affect Crime and Disorder



Drugs

- We know that a substantial proportion of local crime is driven by substance misuse and an active drugs market: contributing to acquisitive crimes and serious violent offending. Consideration of Tower Hamlets' drugs market will be a cross-cutting theme across our strategic priorities and partners will work in partnership to address both substance misuse through treatment and disrupting drug markets through enforcement activity.

Mental Health

- Some of those in contact with the criminal justice system suffer from mental health problems, with people particularly at risk during and after contact with criminal justice system. By identifying and addressing mental ill health at the earliest opportunity we can aim for the best outcomes for those people experiencing mental health issues and provide holistic support for people with complex and challenging needs.

Social Integration

- A thriving, cohesive and well-integrated community can help to reduce the risk of hate crime and the risk of extremism taking root. The Council and relevant partners will continue to monitor community tensions and promote social integration to encourage an environment where people of all backgrounds come together as one community. Our Community Cohesion Plan 2020-2025 sets out our priorities and commitments to strengthen cohesion in the borough.



Principles That Will be a Feature Throughout the New Plan



Early Help and Prevention

Focus on early intervention and prevention, and the wider determinants of crime and community safety, including social inequalities, employment, skills, health, housing and environment

Public Health approach to violence

Focus on defining and measuring the issues contributing to violent offending and making use of existing resources, available funding and innovative projects to tackle it

Contextual safeguarding

Focus on contextual safeguarding, taking a whole-family approach and accounting for every context and environment that adolescents encounter beyond their family. This involves adopting a trauma informed approach, using a local understanding of the impact of adverse childhood experiences have on involvement in crime and ASB

Resident involvement:

coproducing solutions with our local community to understand local priorities and develop an approach that is responsive and effective in increasing feelings of safety.

Collaboration:

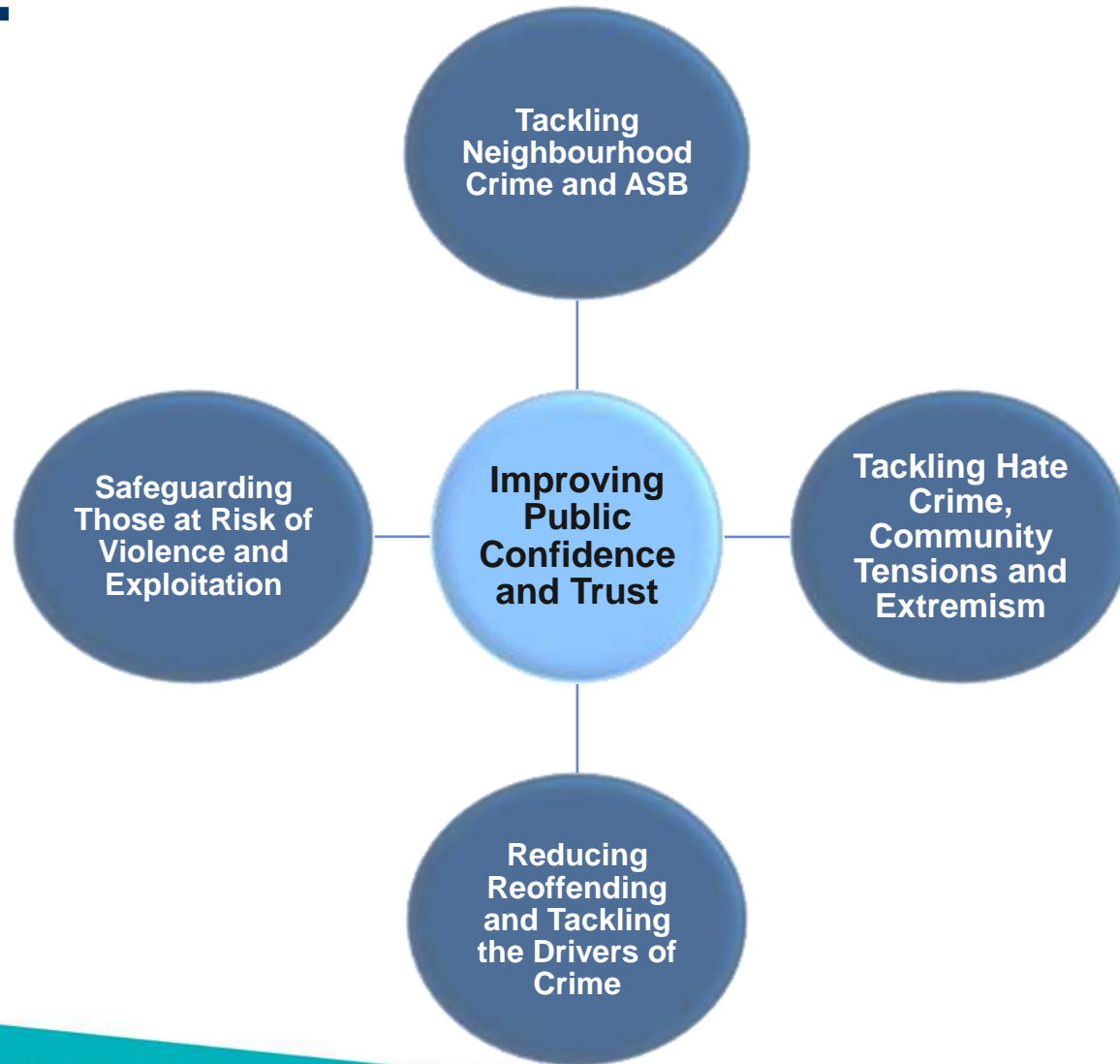
Share data and intelligence and work across agencies to facilitate an efficient and effective approach and better targeted interventions.

Supporting victims:

Ensure a focus on victims and strengthen local systems to support victims, reduce repeat victimisation, and recognise that perpetrators of violence can often be victims too.



Priorities in the new CSP Plan 2021-24



The plan sets out 4 key strategic priorities that aim to address CSP partner outcomes as well as the Council's Outcome 7. We hope that, by addressing these priorities, we will improve confidence and trust in policing and the CSP

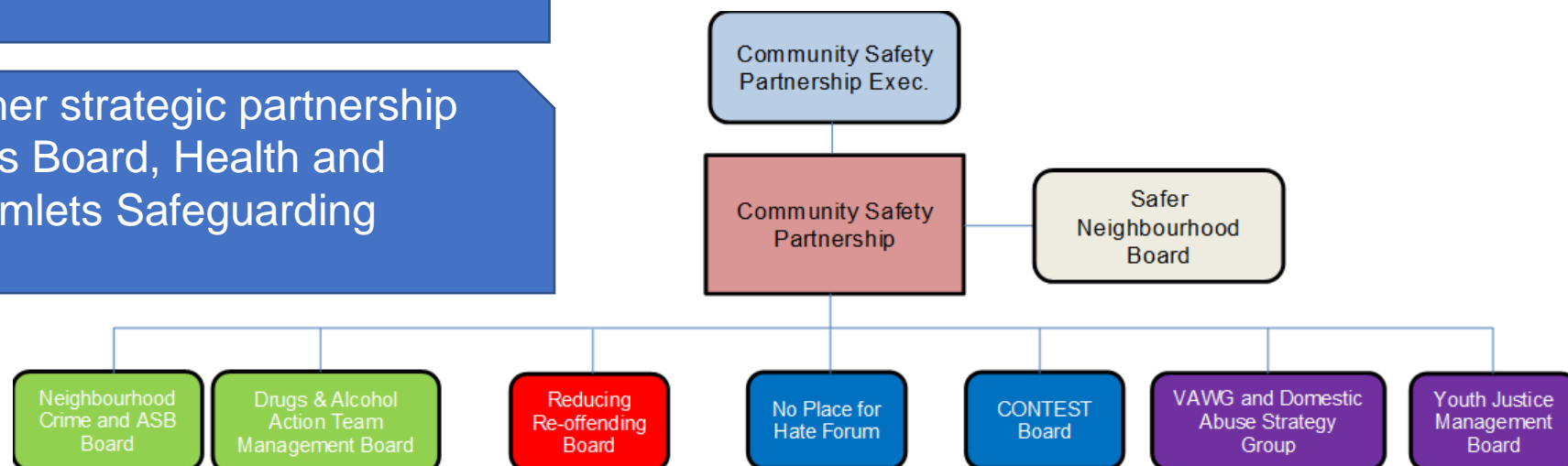


How the Plan will be delivered

The CSP has 7 strategic subgroups to drive the operational delivery

In Tower Hamlets, the Safer Neighbourhood Board (SNB) operates alongside our CSP so that our local community is considered and can contribute when making strategic decisions

The CSP works closely with other strategic partnership boards: the Safeguarding Adults Board, Health and Wellbeing Board and Tower Hamlets Safeguarding Children Partnership (THSCP)



What difference will the plan make for residents



Will tackle crime, anti-social behavior, substance misuse and re-offending. It will also address the London Mayor's strategic priorities whilst reducing fear of crime, improving community cohesion and contributing to relevant community plan commitments.

The plan incorporates the Mayor of London's 'Transparency, Accountability and Trust in Policing Action Plan' principles around better use of police powers, working together to make BAME communities safer

Help to reduce environmental crime related anti-social behavior. The plan will look to address criminal damage, graffiti, fly-tipping, fly-posting and other environmental crimes in the borough. Nitrous Oxide PSPO will reduce visible canisters

Tackle and prevent harm and exploitation of all kind

Effective prevention will reduce the likelihood of young people becoming involved in gangs, group offending, carrying knives and otherwise becoming involved in the criminal justice system

Disruption and targeted action against the highest harm serious and organised criminals and networks in Tower Hamlets.

