

Fig 1.5.2: 2015 Submitted Scheme Axonometric, view from south west

Figure 1: Massing as originally proposed

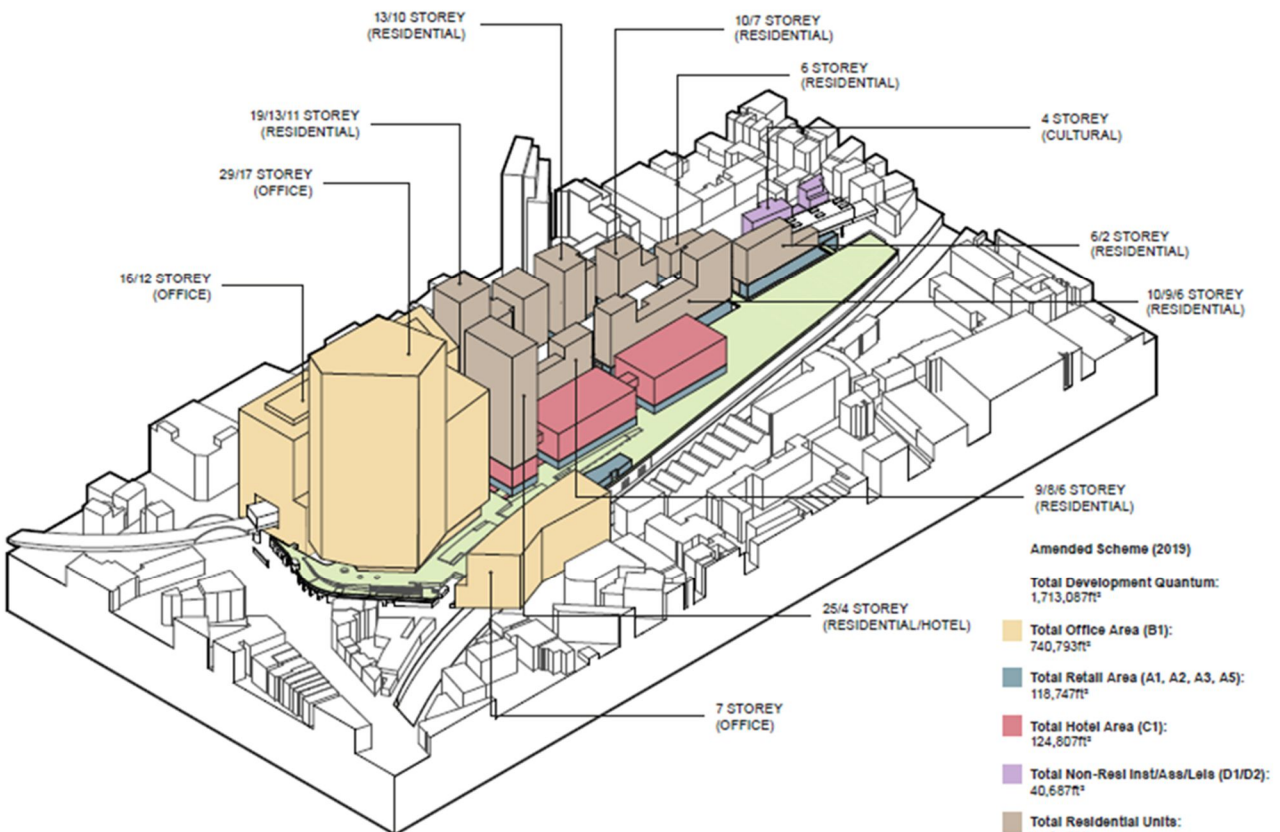


Fig 1.5.3: 2019 Amended Scheme Axonometric, view from south west

Figure 2: Massing for revised proposal



Figure 3: Existing view of site opposite entrance to Shoreditch High Street Station looking east



Figure 4: Proposed Site layout (at grade ground floor)



Figure 5: Proposed Site layout (at platform level/podium level)



Fig 3.5.12: Illustrative view of London Road

Figure 6: Indicative CGI Image of London Road – looking east

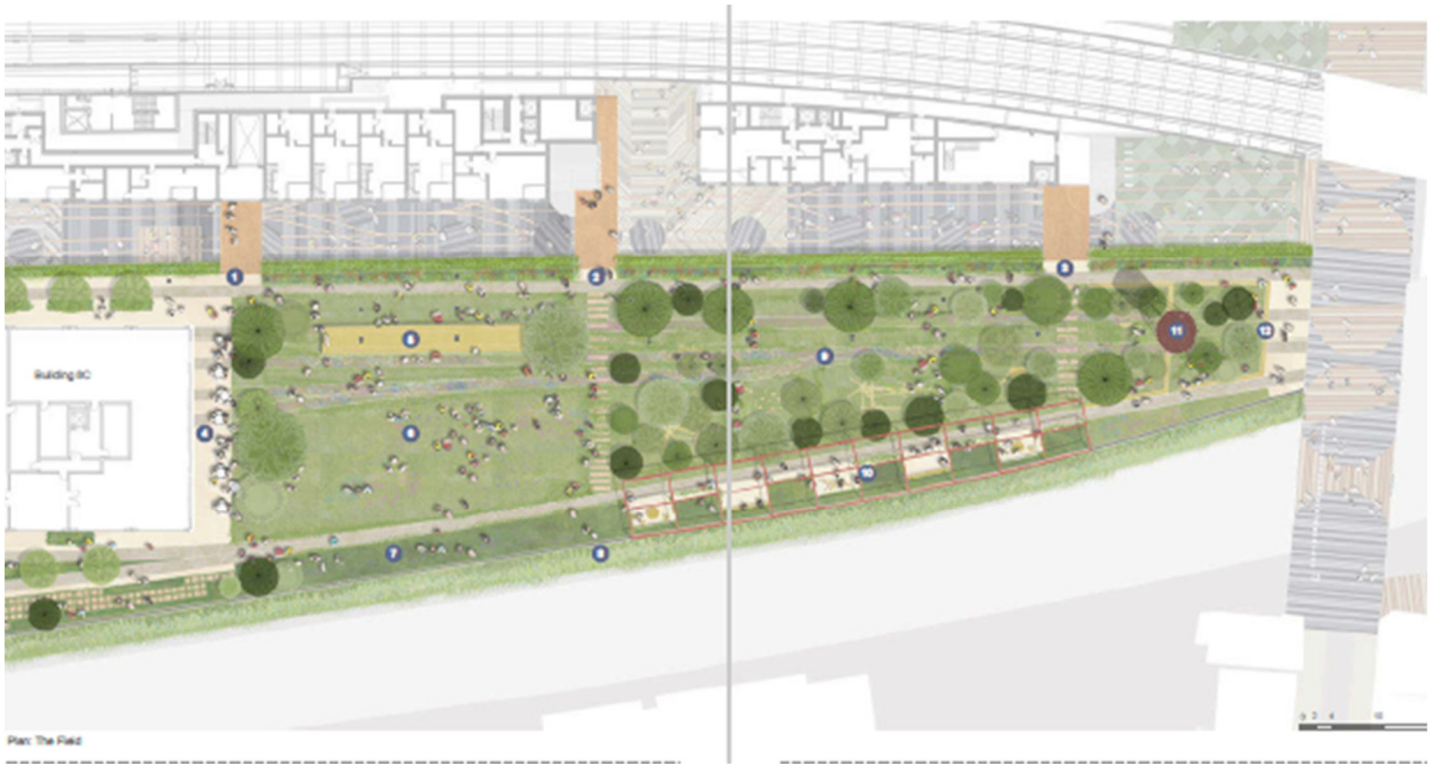


Figure 7: Platform level park (eastern section)



Figure 8: Existing photograph of platform level above Braithwaite Viaduct from the east end of site looking west.

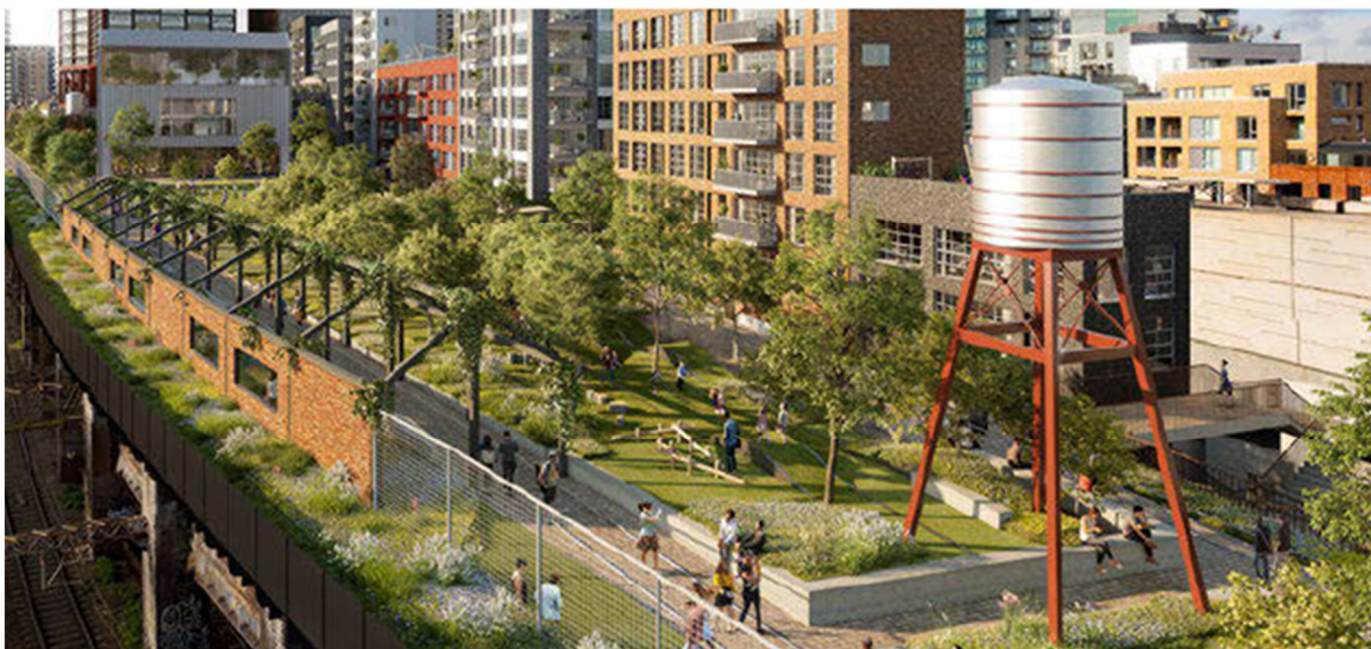


Figure 9: CGI Image of eastern section of Platform level park/ open space (indicative). Proposed buildings shown all fall within outline part of application



Figure 10: Plot 2 – CGI Image View of proposal looking north on Commercial Street (tallest element of scheme)



Figure 11: CGI Image - Indicative *only* of Plots 1 and 4 (massing shown at maximum parameter)

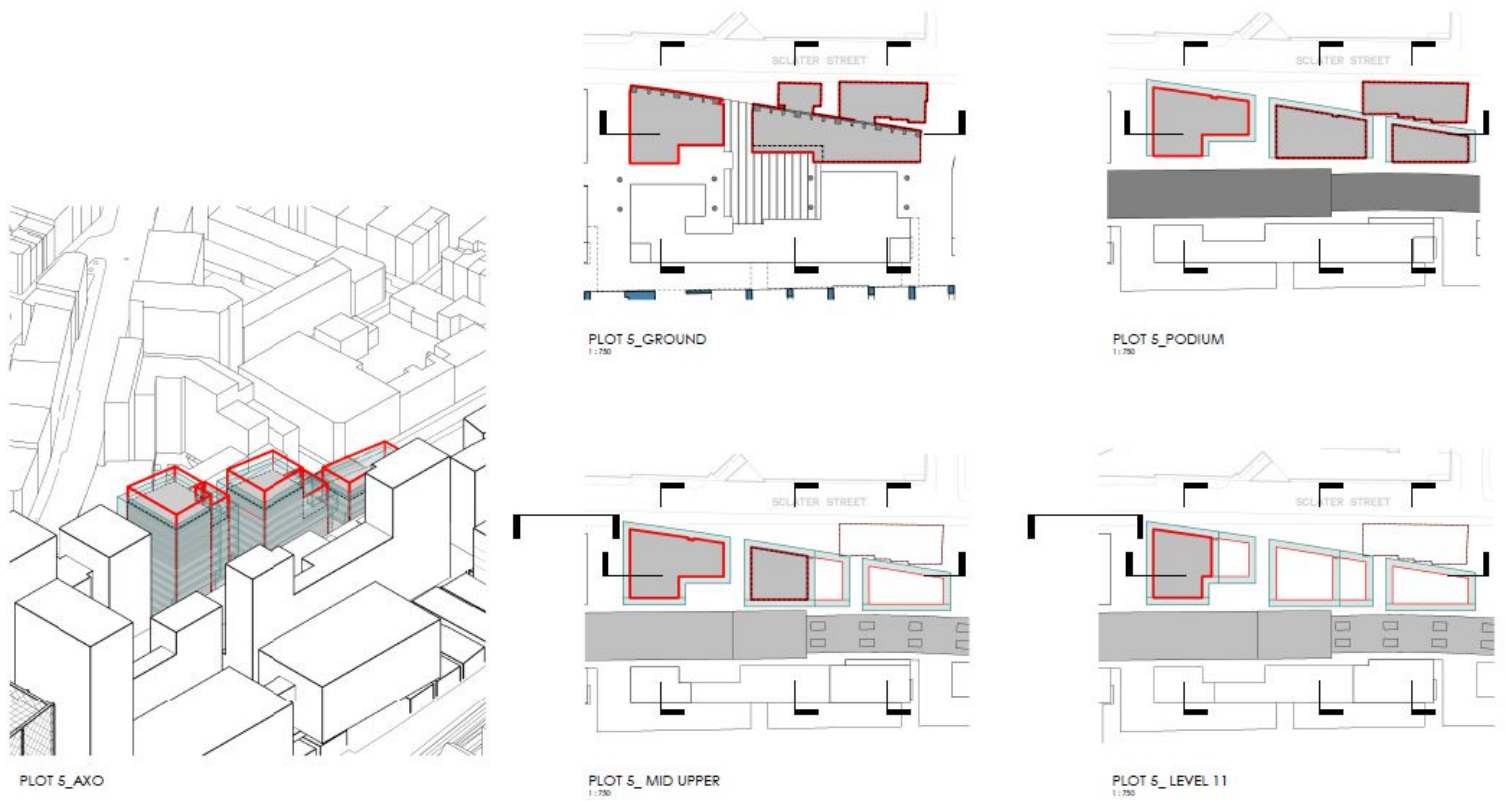


Figure 12: Typical parameter plan (for Plot 5)



Figure 13: Existing photograph of listed arches under Braithwaite Viaduct



Figure 14: View south from Wheler Street (rear of 154 Commercial Street in the centre)



Figure 15: Sclater Street buildings

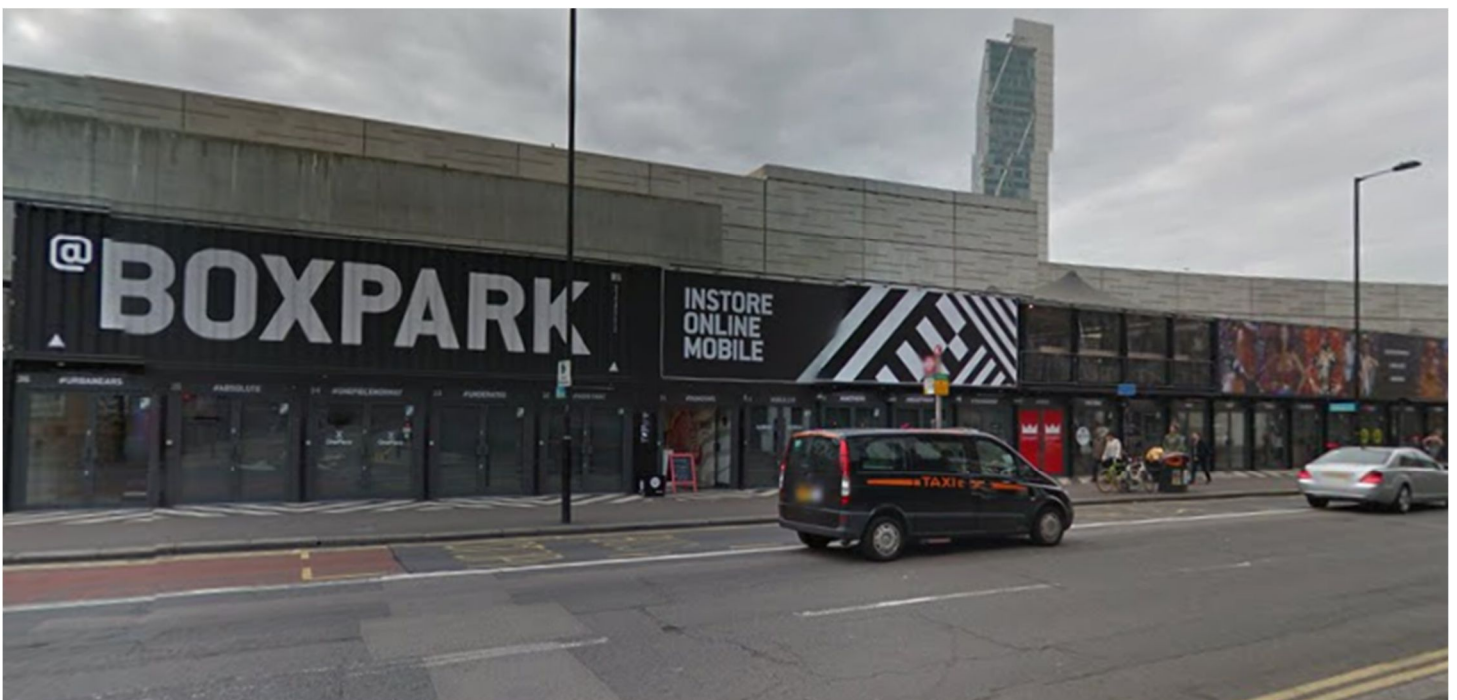


Figure 16: Boxpark



Figure 17: View east along Bethnal Green Road with Tea Building on left hand side