

GUARDIAN ANGELS CATHOLIC PRIMARY SCHOOL & ST ANNE'S CATHOLIC PRIMARY SCHOOL CONSULTATION FEEDBACK

DR HELEN JENNER

15TH DECEMBER 2019

JOINT GOVERNING BODY MEETING

AGENDA

- Introduction
- Update from the Steering Group
- Reading time
- Response to report
- Moving forward
 - Likely LA response
 - Review amalgamation proposal (papers from 17th October meeting)
 - Consideration of draft letter to parents
 - Consideration of draft letter to Local Authority
 - Consideration of next GB meetings (in the light of LA request that GB should meet after statutory notice period has ended).
- Any Other Business

WHAT THE NUMBERS SHOW

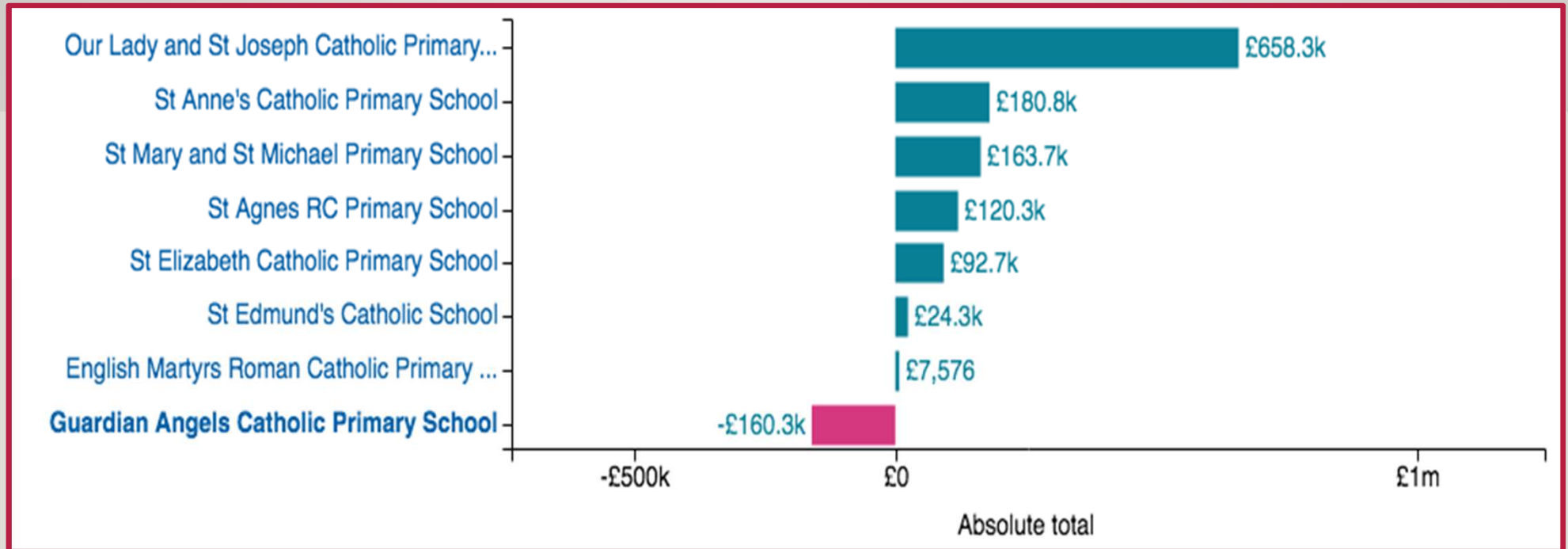
Total pupils at Guardian Angels - 168

Recep	Y1	Y2	Y3	Y4	Y5	Y6
14	16	25	29	27	28	29

Total pupils at St Anne's

Recep	Y1	Y2	Y3	Y4	Y5	Y6
35	26	29	29	37	32	34

THE FINANCIAL POSITION AS REPORTED BY CATHOLIC PRIMARY SCHOOLS TO THE DFE AT THE END OF 2019



The actual Guardian Angels end of last year deficit is significantly higher than this, work is underway to unpick accounting errors so that the full figures can be known (likely to be around £300,000)

COMMUNICATIONS

Information to all Governing Bodies Termly since Sept 18

Future Ambitions Report to all schools February 2019

- Family Matters article June 2019
- Letter from Director of Education to all parents July 2019
- Letter from Governors following GB decision to consult
- Consultation Documents explaining position Monday 4th Nov release, inviting feedback
- Parents meetings planned for school based consultation 13th 20th Nov
- Coffee mornings 27th (GA) 28th Nov (St A) Joint meetings planned for Jan/Feb
- LA Open Information Sessions – Primary Review 11th Dec (9-12.30 and 6.30-8.30)
- LA decide whether to publish statutory notices in January (Publication 3rd Jan)
- Decision taken by Council Cabinet in February 2020

PRIORITIES FOR DECISION MAKING (FROM PRAG)

- We must provide world class education, fit for the future
- We must retain skilled staff
- We must ensure a model of school sustainability that includes resilient and agile financial management and governance
- We must use the opportunity to improve sites and premises
- We must maximise resources between schools to reduce transitions, maximise value for money and increase opportunities for children and staff
- We must ensure a balance of provision across the Borough that matches local need

HOW WAS FEEDBACK COLLECTED

- Notes from Parents meetings and coffee mornings
- Notes from staff and union meetings
- Collation of written responses
- Consultation Report pulls all of these together
- FAQs being developed
- Letter to parents summarises key concerns

PARENTS MEETINGS KEY QUESTIONS

12 unique questions

2 questions asked at 3 separate meetings

What will happen in a few years if the numbers of children drop again? Is there a guarantee it won't happen again?

Will there be a new uniform?

7 questions asked at 2 separate meetings

What will the ratio of teachers to children be?

Will all the children be kept together - so StAs children in StA classes and vice versa?

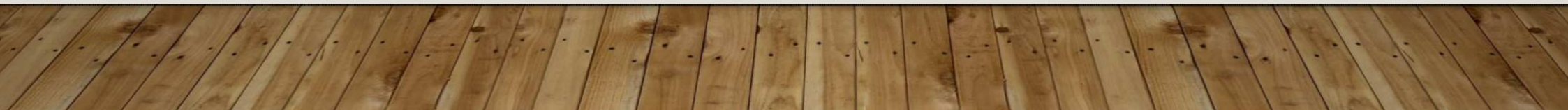
Can we get together - GA & StA parents?

Why can't StA school move here?

Will all the staff from GA come over to St Anne's?

Will there be a change of name?

How will you manage the change in culture and ethos & values for children - for both schools?



WRITTEN RESPONSES ST ANNE'S

ns	Travel - could a bus be provided	Space/numbers	Transition could/ Will be 4 unsettling	Staff security and maintaining teaching during 3 transition	Name of 4 school	Will GA upset St A 4 balance	2					
s	Protects Catholic education	Better 3 together	Children can continue/build 6 friendships	Children will see staff they 3 know	wider curriculum and extra opportunities	Improve 4 education	Better financial 6 stability	Plaque to 13 celebrate	After School 1 Club			2

	Agree	Not clear	Disagree
Parents	14		
Staff	5		
Governor			
Not known			
Other	3		
TOTAL ADULTS	22	0	
Children	5		
Children with parent	3		
TOTAL ALL	27	0	

WRITTEN RESPONSES GUARDIAN ANGELS

Travel - could a bus be provided	Uniform- either don't change or subsidise 21 (inc PE kit)	Transition could/ will be 6 unsettling	Staff security and maintaining teaching during 10 transition	Name of school 4	Best way to group children in 4 future?	Have all options been considered? (including phasing) 7	Breakfast/ After School 11 Provision	Admissions 2 Policy	3
Protects Catholic education	Better 5 school site	Children can continue 4 friendships	Children will see staff they 2 know	wider curriculum and extra opportunities 3	opportunity to address GA Requires 3 Improvement	Better financial management 3	4		

	Agree	Not clear	Disagree
Parents	4	10	
Staff	2		
Governor	1		
Not known	1		
Other	1		
TOTAL ADULTS	9	10	
Children	2		
Children with parent	2		
TOTAL ALL	11	10	

STAFF KEY QUESTIONS

- How will we establishing shared values and vision?
- How will classes be organised to ensure children mix well and “us and them” is avoided?
- Will the amalgamated schools staff be made up of 50% from Guardian Angels and 50% from St Anne’s?
- How many staff will be required for the new amalgamated school? Does this depend on how many Guardian Angels pupils move over to St Anne’s? How soon can we know?
- Will I have to apply for my own job?
- Will there be a redeployment/ redundancy scheme. What is the offer?
- How do we make sure uncertainty doesn’t affect staff or children?

GOVERNORS NEED TO CONSIDER EDUCATIONAL IMPLICATIONS FOR CHILDREN

1

Strong School / Capacity to offer wrap around and after school activities

2

Capacity for including the whole group to maintain friendships, better manage transition

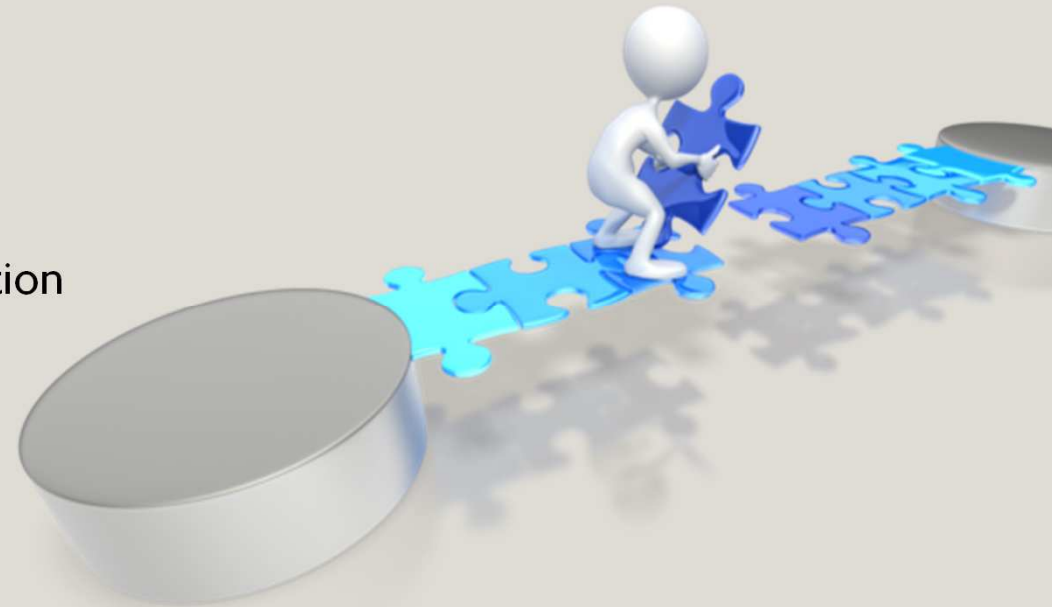
3

Capacity to build on current learning and extend capacity to offer increased opportunities and address underachievement

PARENTS WANT TO SEE PLANNING FOR TRANSITION

- Maintain quality education for the children
- Identify opportunities for improvement
- Build on existing strengths
- Build on existing relationships
- Involve parents to identify key priorities
- Recognise the challenges in moving to improved education
- Work together to minimise disruption
- Work together to maximise communication

Visits to St Anne's have been very successful
Parents and children welcome joint activities
Some parents have already chosen to move schools
Coffee mornings positive
Parents want joint parent discussions
What else can be done prior to the decision?



GOVERNORS NEED TO CONSIDER

- Reminding themselves of original decision to consult on amalgamation and why
- Should the consultation feedback change the original decision?
- Is quality education being maintained despite complex agenda?
- Admissions criteria have now been reviewed by Diocese – happy to share with LA?
- What to do about the petition
- Parental/staff/child concerns have been acknowledged, can any be addressed now?
- Communication with parents – Steering Group draft letter
- Communication with the LA – Steering Group draft letter
- How to manage next stages of consultation and levels of anxiety
- Are transition plans to date effective? What more needs to be done?
- If the decision goes ahead how to start planning for very busy Summer Term