



**LOVE**  
YOUR  
NEIGHBOUR  
HOOD



**TOWER HAMLETS**

# LIVEABLE STREETS BETHNAL GREEN

Liveable Streets is a multi-million pound borough-wide street and public space improvement programme. The residents of Tower Hamlets deserve quieter, safer and less polluted streets.

We've listened to your concerns on issues including:

- Air pollution which in areas is at unhealthy levels, affecting children and adults' health and life expectancy
- Through-traffic which equates to 57% of all vehicle journeys
- Anti-social behaviour, drug dealing and crime in Arnold Circus and Middleton Green

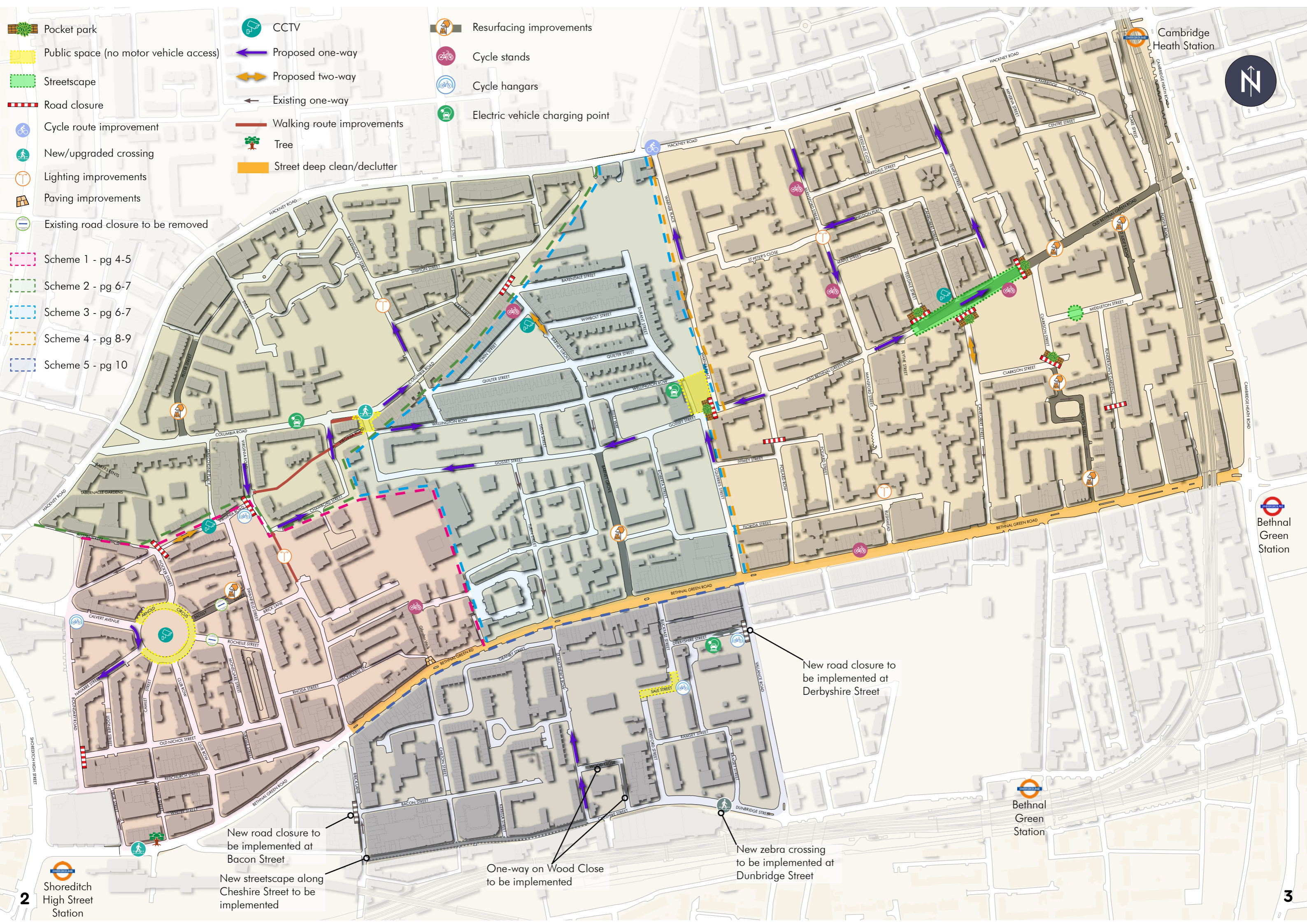
This booklet contains our proposals to help tackle these problems. Let us know what you think before **Monday 25 November 2019**.



Artist's Impression of Arnold Circus proposals

**MAYOR OF  
TOWER HAMLETS**

[www.towerhamlets.gov.uk/liveablestreets](http://www.towerhamlets.gov.uk/liveablestreets)



- Pocket park
- Public space (no motor vehicle access)
- Streetscape
- Road closure
- Cycle route improvement
- New/upgraded crossing
- Lighting improvements
- Paving improvements
- Existing road closure to be removed
- Scheme 1 - pg 4-5
- Scheme 2 - pg 6-7
- Scheme 3 - pg 6-7
- Scheme 4 - pg 8-9
- Scheme 5 - pg 10

- CCTV
- Proposed one-way
- Proposed two-way
- Existing one-way
- Walking route improvements
- Tree
- Street deep clean/declutter
- Resurfacing improvements
- Cycle stands
- Cycle hangars
- Electric vehicle charging point

New road closure to be implemented at Bacon Street

New streetscape along Cheshire Street to be implemented

One-way on Wood Close to be implemented

New zebra crossing to be implemented at Dunbridge Street

New road closure to be implemented at Derbyshire Street

# BETHNAL GREEN

## What's happened so far?

We heard from over 650 local residents during our early engagement in May, who told us about the issues in Bethnal Green and what they wanted to see improved. You gave us your feedback through our online survey, interactive map, drop-in sessions, councillor meetings and meetings with groups in the community.

## What is being proposed?

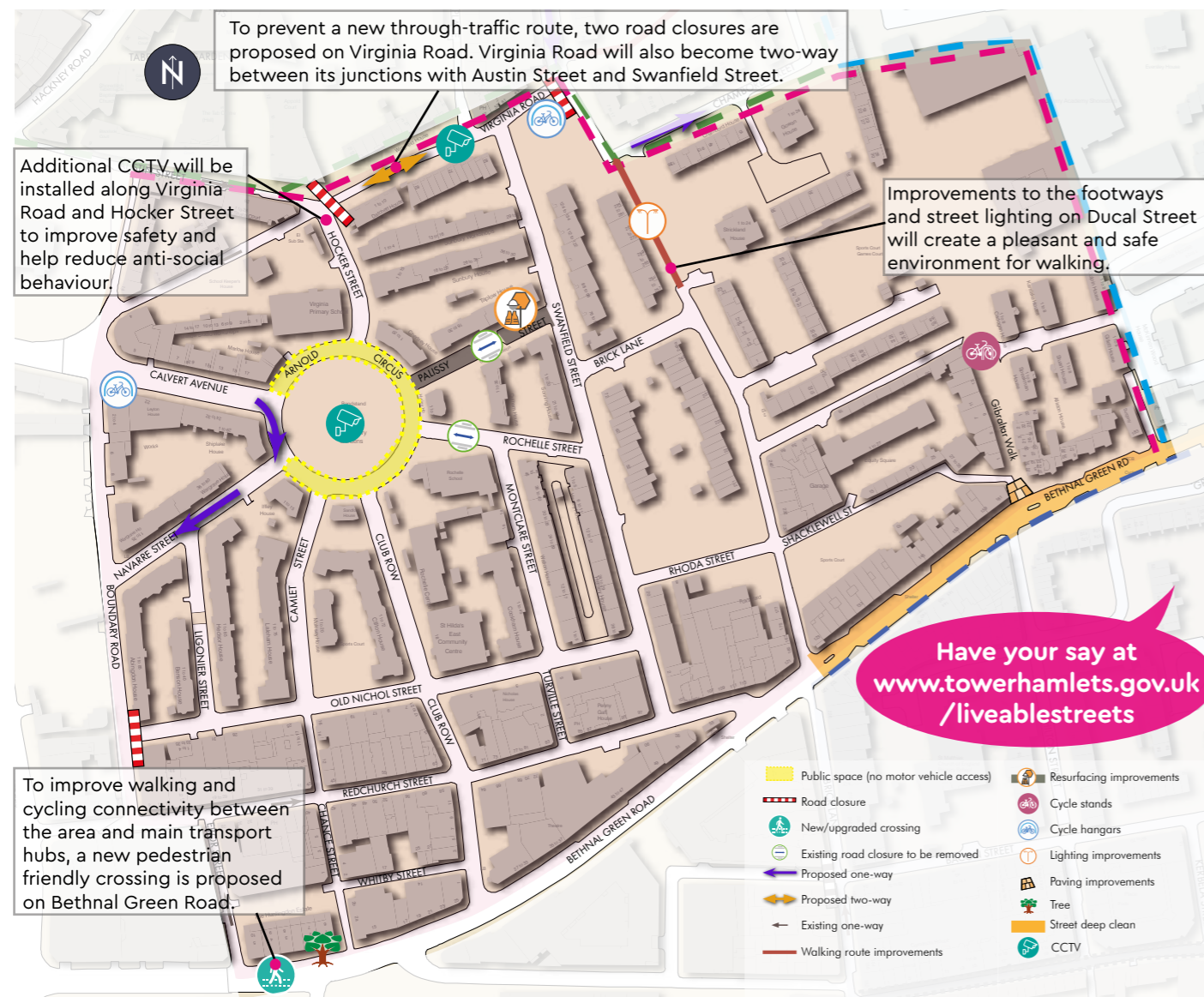
Following the workshops, five new schemes are being proposed which will improve the area for walking, cycling and public transport, improve air quality and help discourage through-traffic and anti-social behaviour. The map on pages 2 and 3 shows an overview of the project area and five schemes for consultation, you can find out more details on the proposals for each area in this booklet.

## Why are these proposals important?

Every day there are over 21,000 journeys within Bethnal Green area. Of these, 57% are vehicles travelling through the area and not stopping. This means over 11,000 journeys are from non-residents of the local area and these vehicles are contributing to the already unacceptable level of air pollution on your street, outside your schools and around your local shops. These vehicles bring additional noise, road danger and anti-social behaviour which make your streets feel unsafe for walking and cycling.

The Liveable Streets proposals will help improve air quality, road safety and give the streets back to the residents. However to achieve this some local residents who want to drive may have to travel longer distances.

## SCHEME 1



## IMPROVING PUBLIC SPACE

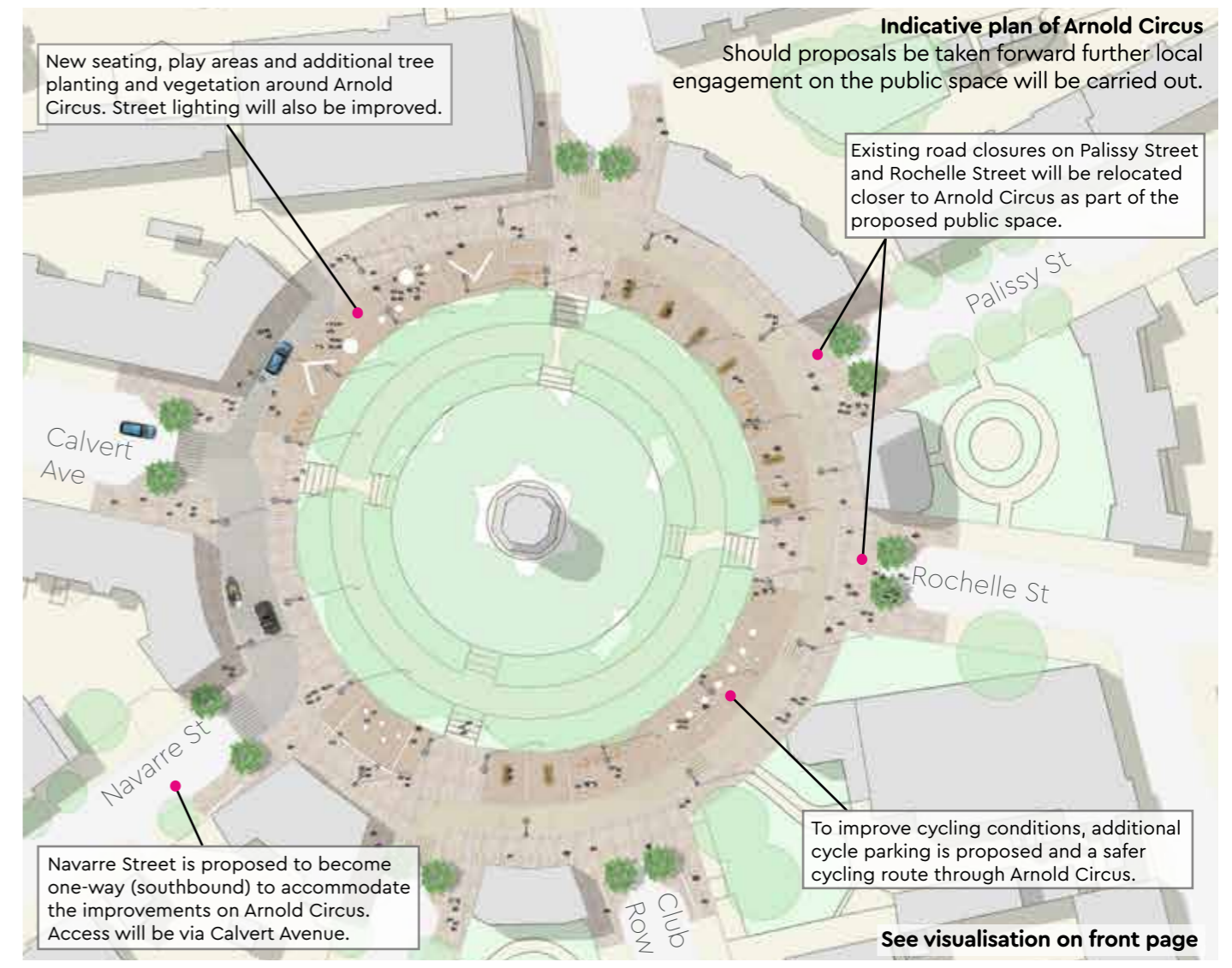
Residents have long suggested that Arnold Circus should become a new public space for all to enjoy. To improve the area for pedestrians and to allow for a vibrant community space we are proposing to close the area to motorised vehicles except for the section between Calvert Avenue and Navarre Street. This will stop through-traffic in this area and allow for new seating, play areas, more trees and better street lighting. These improvements will also help to tackle drug dealing and anti-social behaviour, particularly in the Boundary Estate area. Additionally, new CCTV will be put up in the area.



**You said:**  
**"Arnold Circus should be closed to traffic and become a pedestrian and cycling area."**  
 See below for changes to traffic and improvements.

## ROAD CLOSURES

To help make room for the new public space, we are proposing several road closure points. These will give access to pedestrians and cyclists but will prevent the 2,400 journeys who currently cut through Arnold Circus, helping improve air quality in the area and making it quieter and safer. We will ensure there is no net parking loss across controlled parking zones A1 and A5.



# SCHEME 2

## PUBLIC SPACE

We have listened to your comments about the narrow footways, excessive guardrailing and difficulty of crossing outside the junction of Columbia Road and Gosset Street and so we are proposing a new public space. This would be a space the whole community could enjoy, with new planting and seating and improved air quality.

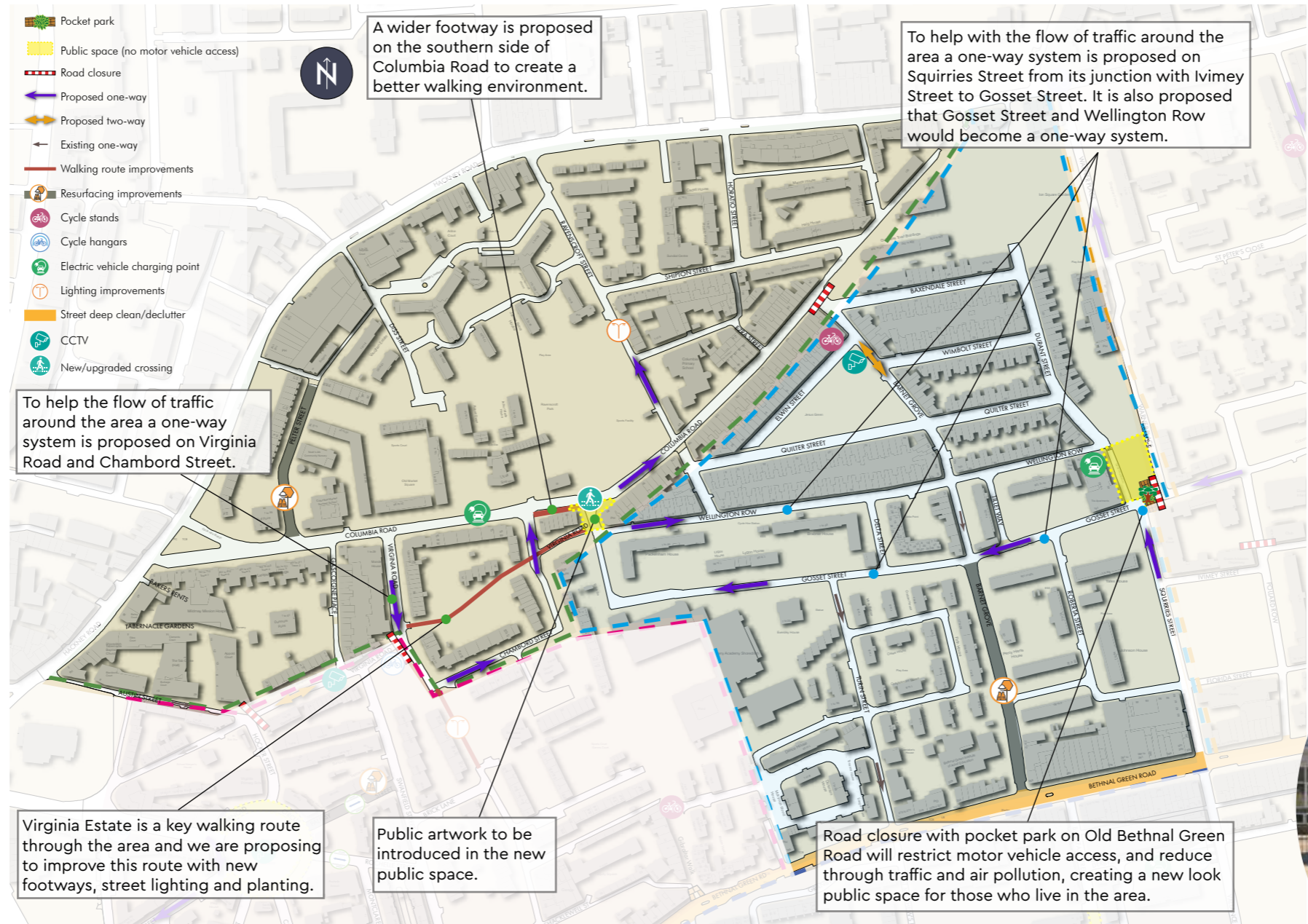
To help prevent 4,000 vehicles travelling through your neighbourhood each day (Schemes 2 and 3), we are proposing two road closures on Columbia Road; at the junctions with Gosset Street and at the junction with Barnet Grove. Less traffic allows us to make improvements to the public space, alongside walking and cycling environments.

Pollution levels inside a car can be twice as much as those on the street

NOW



4,000 vehicles travelling through this area each day



Proposed Scheme 2 Columbia Road Visualisation



Proposed Scheme 3 Warner Place Visualisation

# SCHEME 3

## WALKING AND CYCLING IMPROVEMENTS

One of the main through-traffic routes in the area is between Hackney Road and Bethnal Green Road via Squirries Street and Warner Place. Over 2,000 vehicles use this route every day as a cut through adding to congestion, poor air quality and road safety problems. We propose to implement a road closure on Gosset Street to remove access for motor vehicles and prioritise those walking and cycling.

Changes to the way traffic moves around the area are also proposed to improve road safety and air quality in an area where children and families walk every day to the nearby infant school.



"There is far too much rat running traffic using Squirries Street, Gosset Street, Pollard Row and Warner Place to get between Bethnal Green Road and Hackney Road." See Warner Place visualisation for changes to road layout.

## PUBLIC SPACE

Residents told us they wanted the area around Warner Place, Gosset Street and Squirries Street to be improved with more trees and a nicer public space for people to enjoy. We are proposing a new pocket park at the junction of these streets which will include new planting and seating.

# SCHEME 4

## ROAD CLOSURES AND STREETScape

We are proposing a transformation of the central part of Old Bethnal Green Road. This will reduce the daily 7,900 through-traffic journeys made by drivers who don't stop locally; improving air quality and road safety.

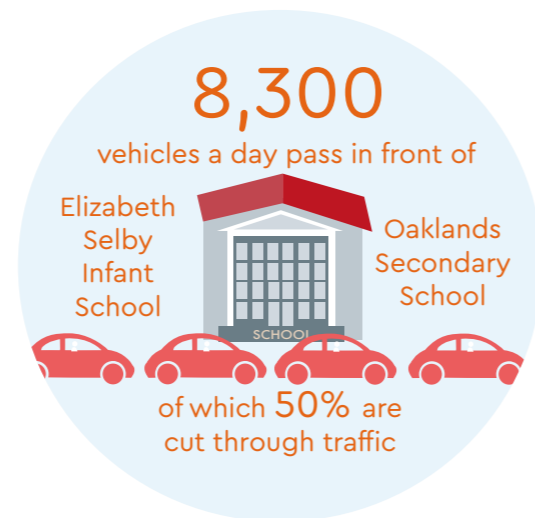
But, we don't just want to remove traffic - we propose investing heavily in this area by widening footways, planting trees, providing new seating, and creating three new pocket parks. This will link Middleton Green with nearby shops significantly changing the look and feel of this part of Bethnal Green for the better. These improvements will also help to tackle anti-social behaviour and crime around Middleton Green.



You said:  
**"Old Bethnal Green Road should be filtered to reduce cars travelling through the area and past the schools."**  
 See below for road closures.

## WALKING AND CYCLING IMPROVEMENTS

Creating wider footways, new seating areas, additional planting and improving street lighting will make people feel safer and enjoy walking through the area. The proposed traffic changes as well as a contraflow cycle lane will improve the cycling environment along Old Bethnal Green Road.



Children in Tower Hamlets have up to 10% less lung capacity than the national average because of air pollution.

# SCHEME 5

## PUBLIC SPACE

To tackle anti-social behaviour we are proposing changes around Sale Street to create a safe community space for residents and visitors to enjoy, while removing through-traffic and improving air quality.

Currently, Sale Street is mainly used by cyclists and for parking cars. A new pocket park is proposed next to St Matthews Church with seating areas and improved street lighting which will create a safer feel in the area

and discourage anti-social behaviour. The proposal also includes plants to help filter any excess surface water. This will increase the biodiversity, improve the air quality and make the area look better.

## WALKING AND CYCLING IMPROVEMENTS

New cycling routes and cycle parking facilities, improved street lighting, better, more levelled pavement surfaces and more seating will create an improved walking and cycling environment.



Proposed Sale Street Visualisation

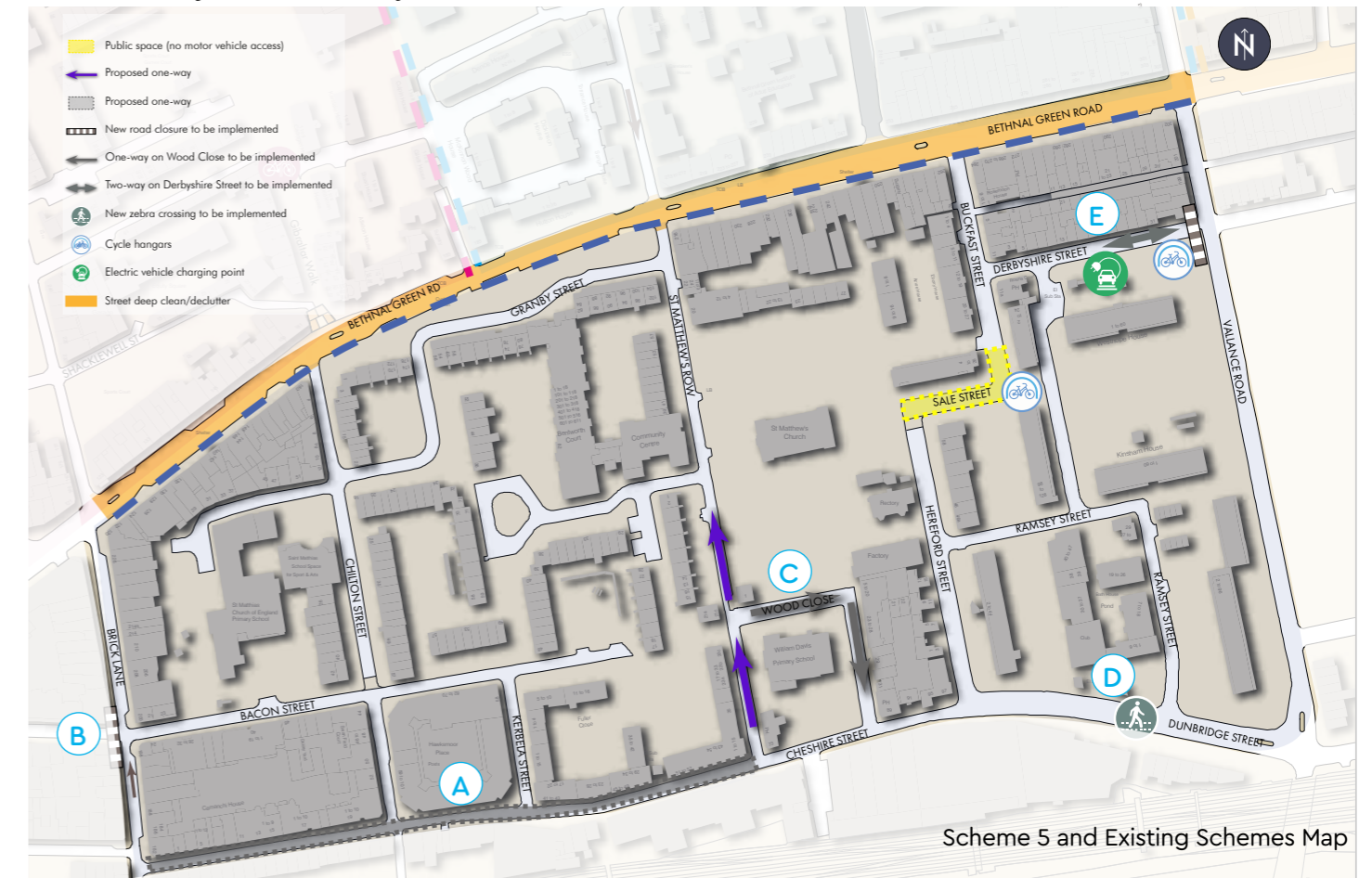
# COMPLEMENTARY MEASURES

A number of maintenance issues and small local improvements have been brought to our attention by residents. As part of the scheme we are pleased to be able to address a number of these, which include:

- CCTV - additional CCTV cameras are proposed in anti-social behaviour hotspots.
- Decluttering of Bethnal Green Road - unnecessary street furniture will be removed and a deep clean of pavements and remaining street furniture will take place.
- Street Lighting - over the next two years the street lighting across the whole area will be updated with new energy saving LED lights. In addition, in areas like Ducal Street new lighting columns are proposed to improve visibility and safety in the area.
- Cycle parking - a further 100 cycle stands are proposed in the area of Bethnal Green to ensure that those passing shops, going to school, or visiting friends have somewhere to lock their bike.
- Secure cycle parking for residents (Cycle Hangars) - more hangars are proposed in the area so residents have secure parking for their bicycles.
- Trees - as part of the proposals we shall be planting an extra 50 trees in the area.

# EXISTING SCHEMES TO BE IMPLEMENTED

As a result of previous consultations there are some existing schemes which will be implemented in the area. **Cheshire Street (A)** will benefit from a widened pavement outside the shops, new seating areas, tree planting and improved street lighting. As well as, a pocket park on the corner of Kerbela Street and improved walking and cycling routes with more cycle parking facilities. A road closure will be implemented on **Bacon Street (B)**, west of Brick Lane. A one-way system will be introduced on **Wood Close (C)**. An additional pedestrian crossing will be implemented on **Dunbridge Street (D)** next to its junction with Ramsey Street. A two-way system will be introduced on **Derbyshire Street (E)** between Buckfast Street and Vallance Road with a road closure at the junction of Derbyshire Street with Vallance Road.



Scheme 5 and Existing Schemes Map

# HAVE YOUR SAY

Please provide your feedback by **Monday 25 November 2019**

## Take part in the consultation:

We hope that you like the proposals and understand how they have been designed in order to benefit those who live in and visit Bethnal Green. It is important that you have the opportunity to have your say so that we can best reflect how the local community would like to see their area improved.

## Have your say:

- Come and join us at one of the drop-in sessions (see back page for details)
- Fill in the survey included in this booklet and send it back using the freepost addressed envelope enclosed
- Visit [www.towerhamlets.gov.uk/liveablestreets](http://www.towerhamlets.gov.uk/liveablestreets) to find out more information
- You can also email us at: [liveablestreets@towerhamlets.gov.uk](mailto:liveablestreets@towerhamlets.gov.uk)

## What happens next?

Your views are important to us. We want everyone who lives, works and studies in the area to have their say on the proposed changes. This document is also available online at [www.towerhamlets.gov.uk/liveablestreets](http://www.towerhamlets.gov.uk/liveablestreets)

# HAVE YOUR SAY LIVEABLE STREETS

Your views are important to us. We want everyone who lives, works and studies in the area to have their say on the proposed changes.

## **Come and speak with us at one of our drop-in events:**

- Saturday 9 November, 10am to 12noon
- Thursday 14 November, 5pm to 7pm

**Venue:** Professional Development Centre  
229 Bethnal Green Road, London E2 6AB

## **For more information visit:**

[www.towerhamlets.gov.uk/liveablestreets](http://www.towerhamlets.gov.uk/liveablestreets)

## **Contact us at:**

[liveablestreets@towerhamlets.gov.uk](mailto:liveablestreets@towerhamlets.gov.uk)

If you require information in another format, email us at the address above.

