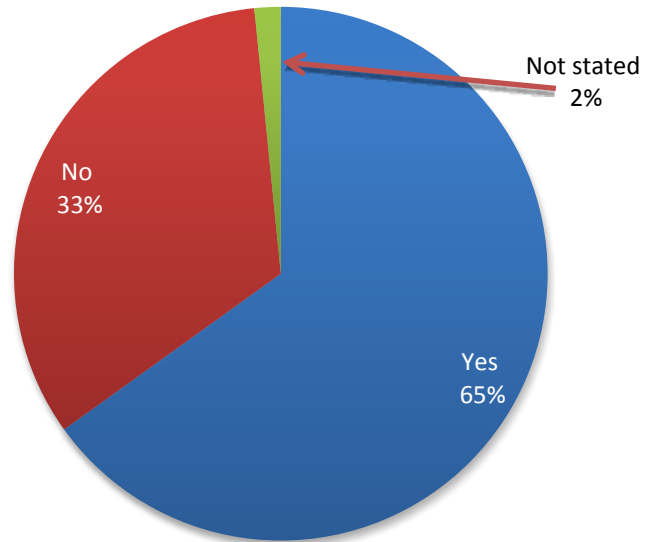
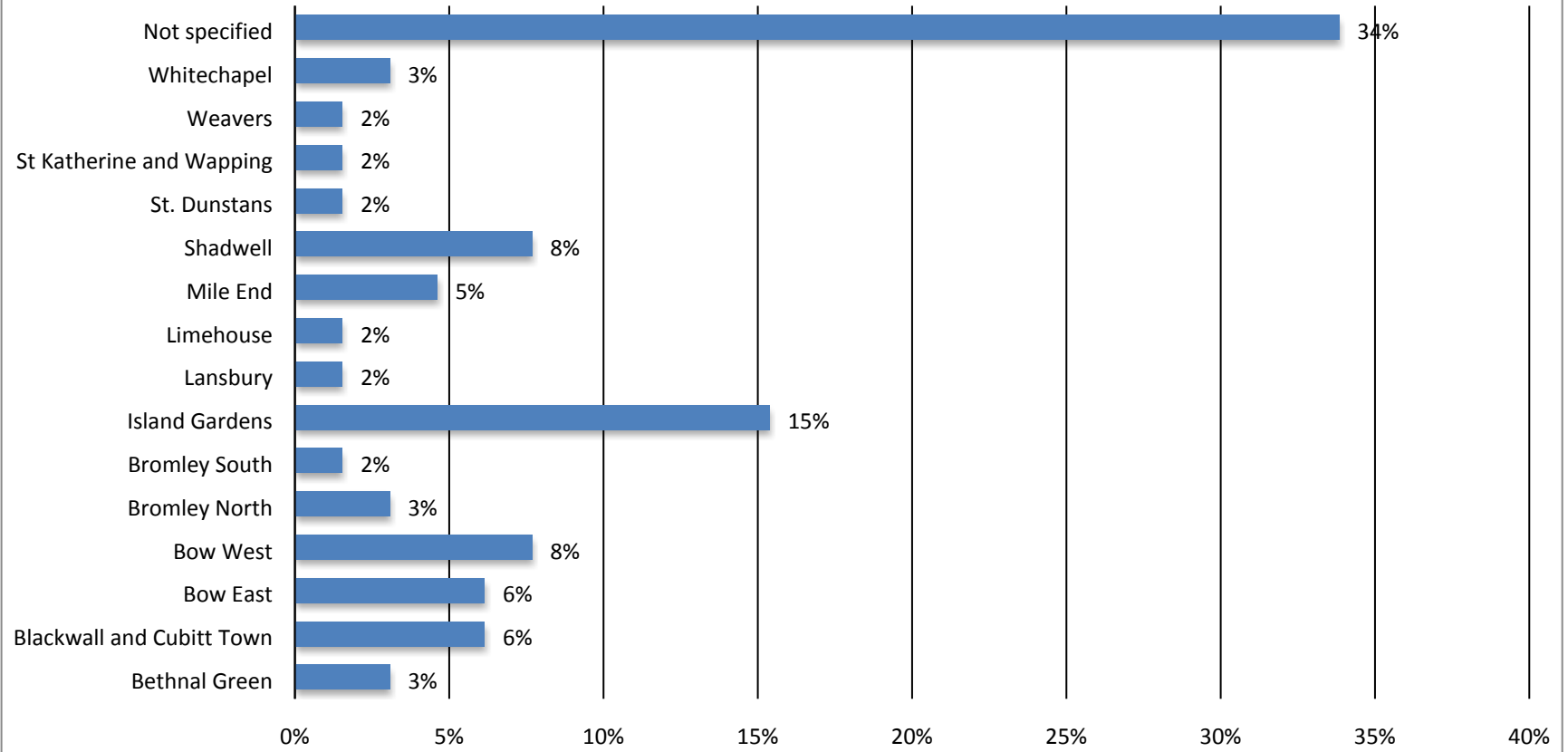


Appendix Six: Online responses

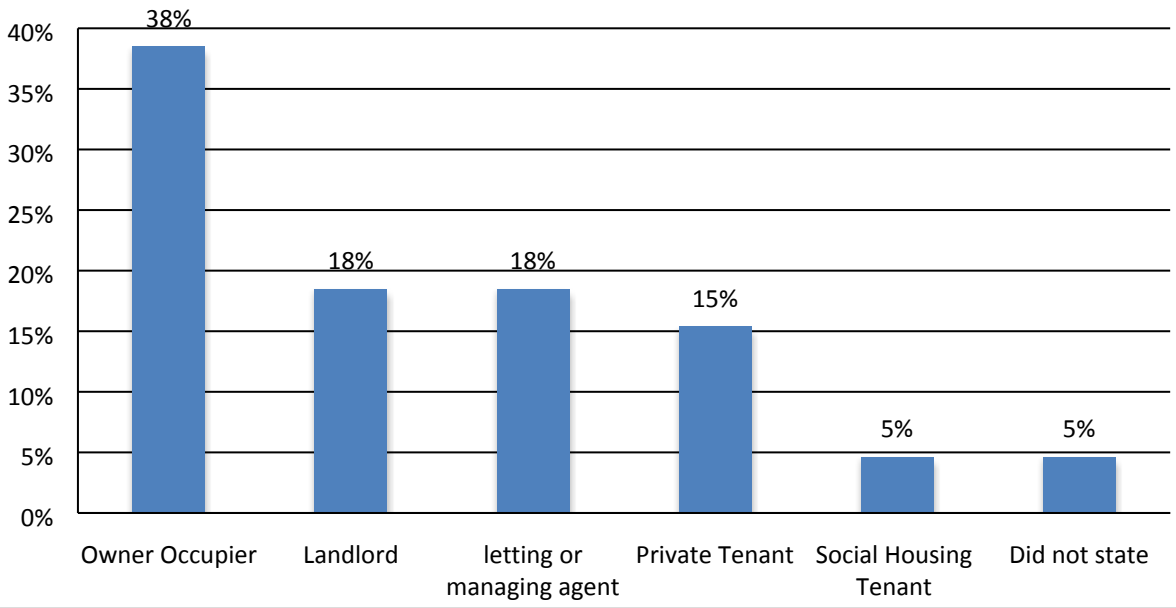
Are you a resident of Tower Hamlets



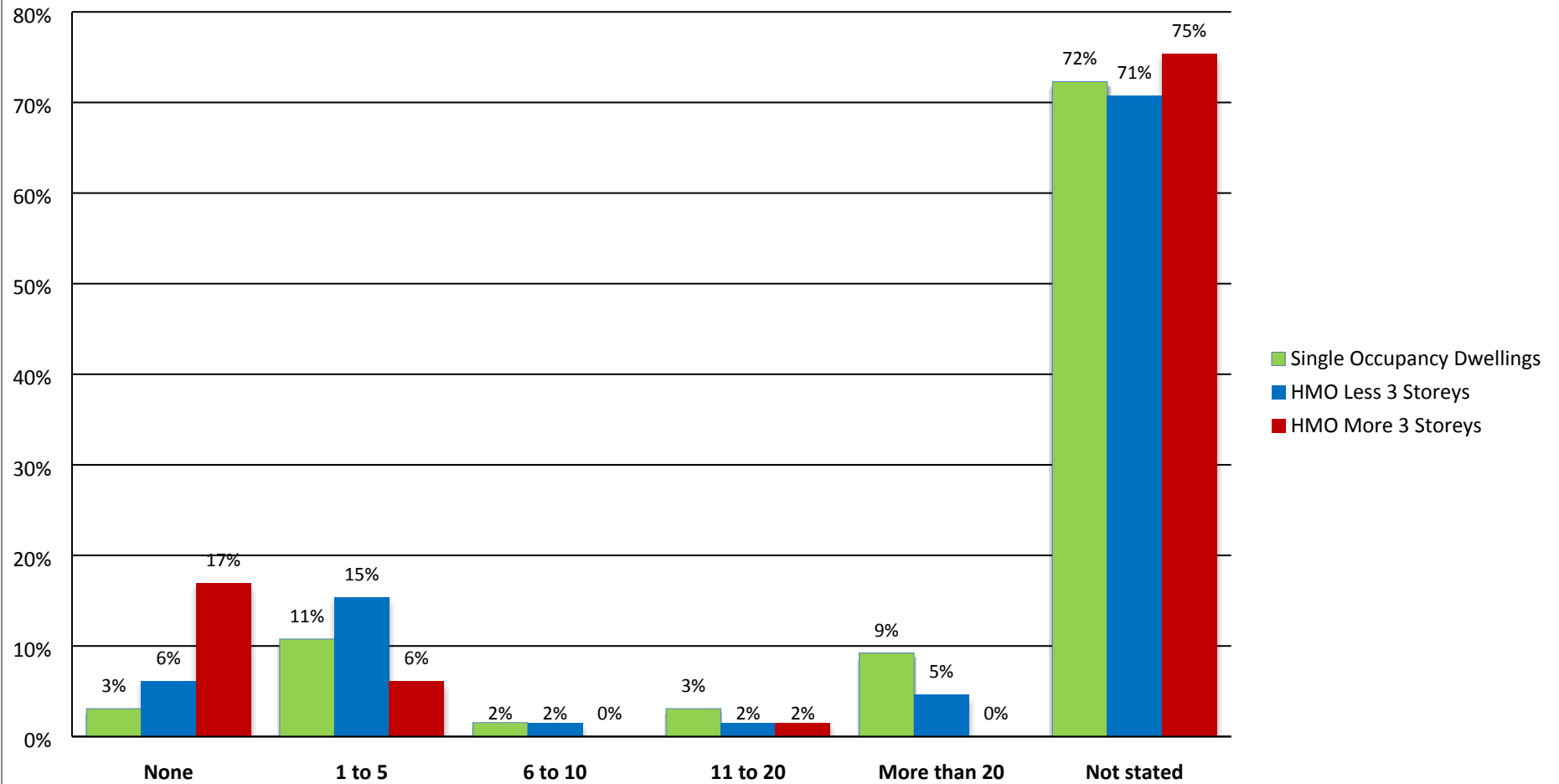
Response by ward



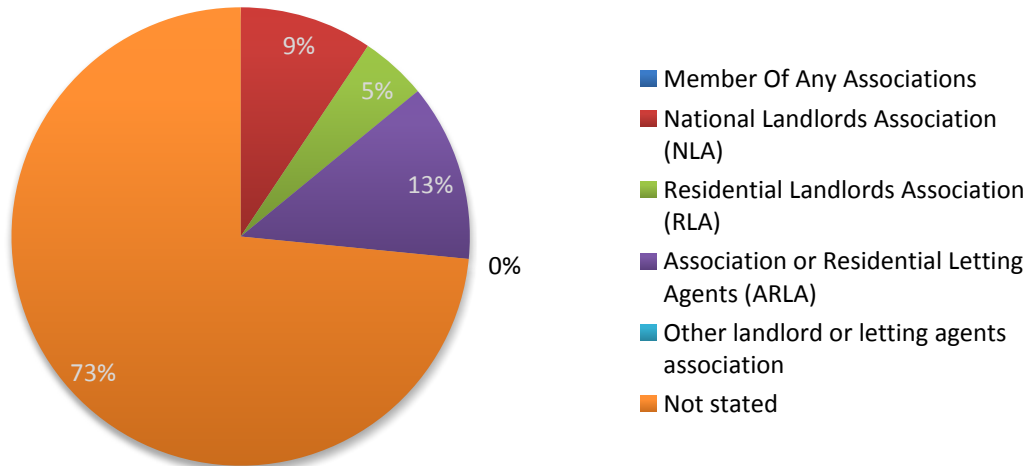
Response by tenure



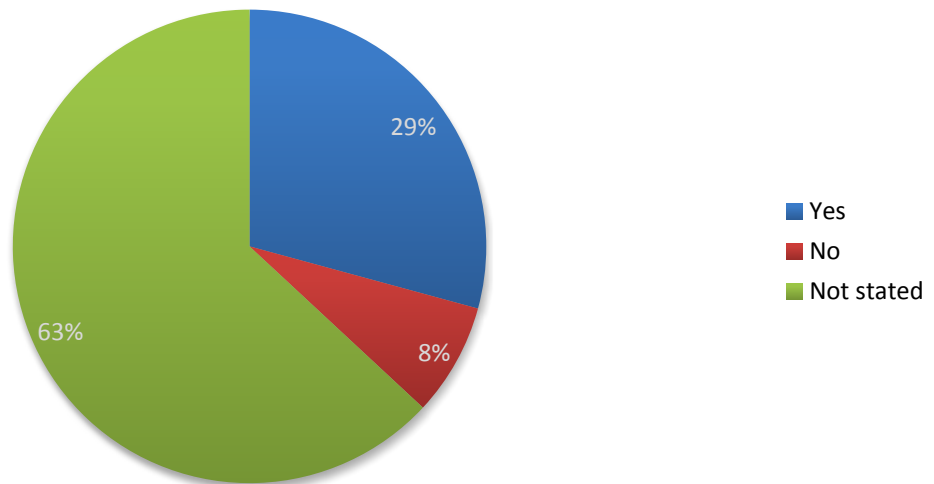
No of Properties owned or managed in Tower Hamlets



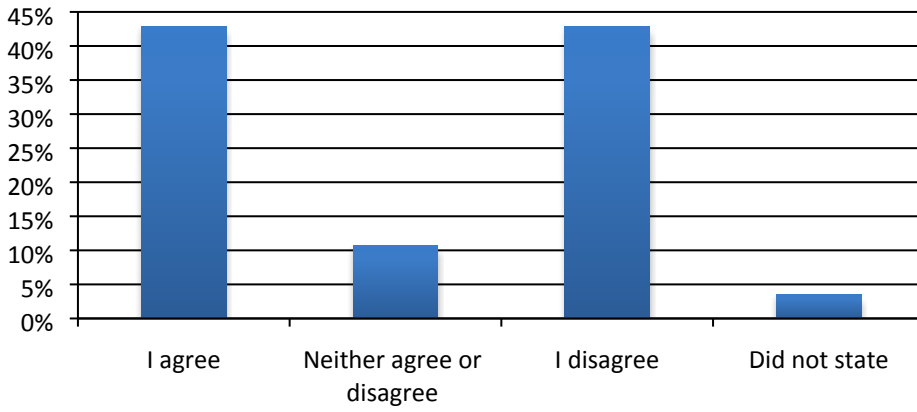
Landlords/agents who are a member of an Association



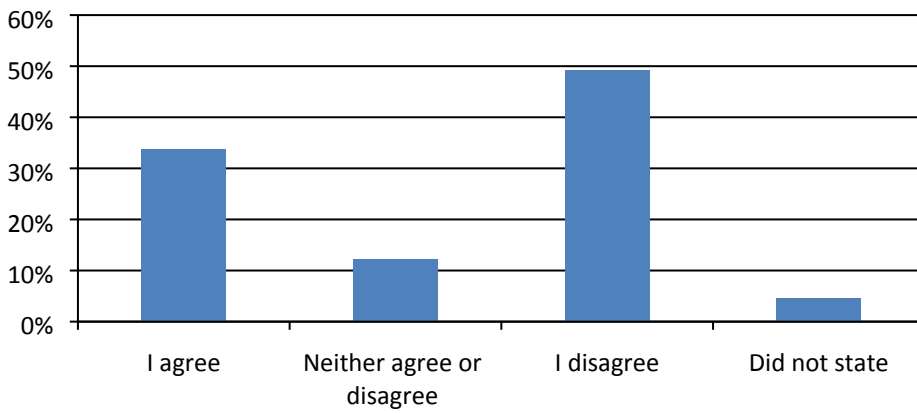
Landlords/agents who own or manage properties outside Tower Hamlets



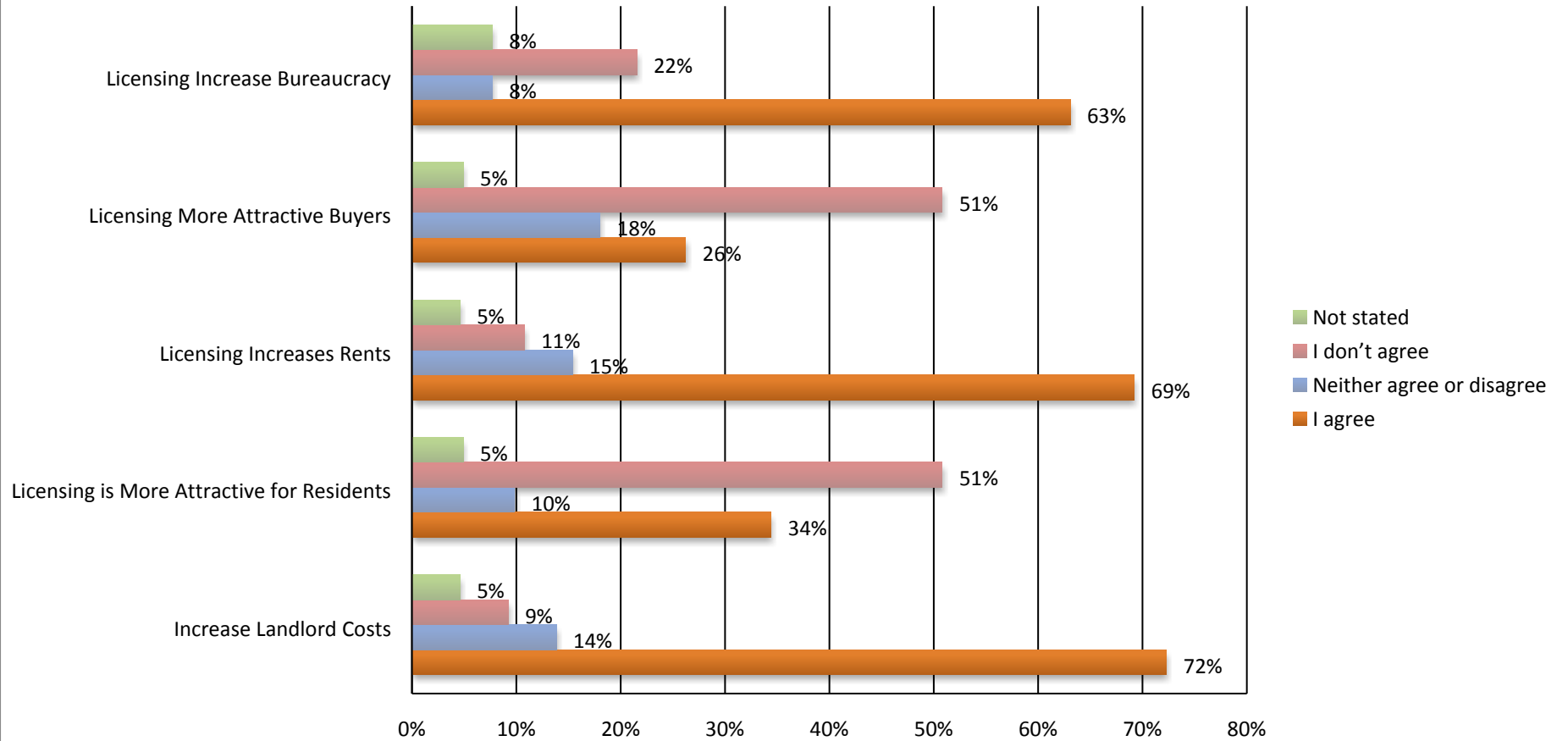
Do you agree or disagree with the general proposals Licensing Scheme



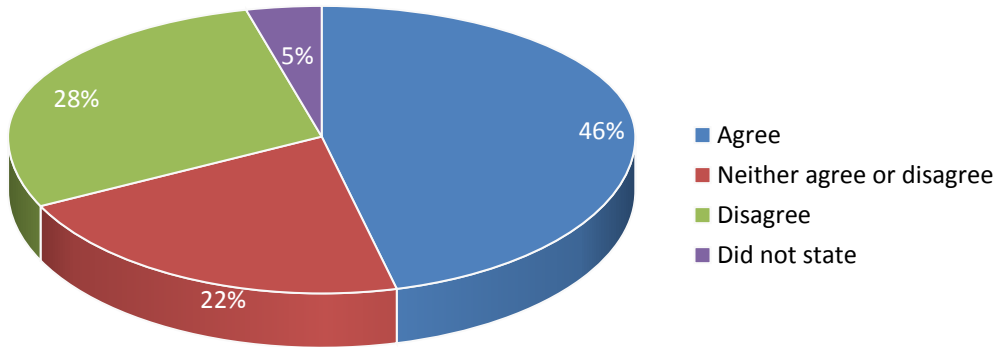
Do you agree or disagree with the Licensing proposals limited to three renters



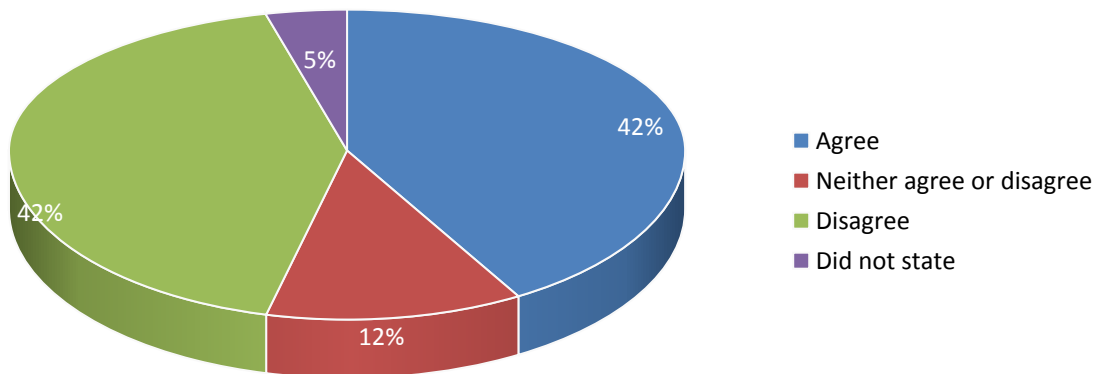
Proposed Scheme will improve Private Rented Sector?



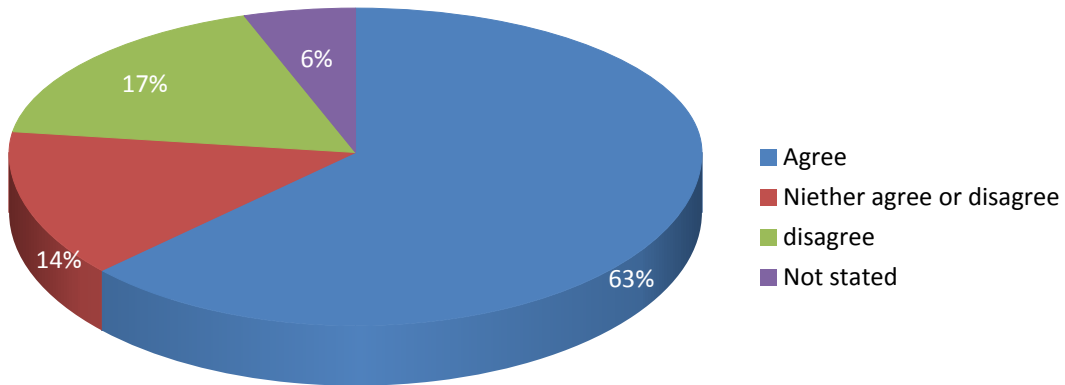
Unable to rent properties in Tower Hamlets



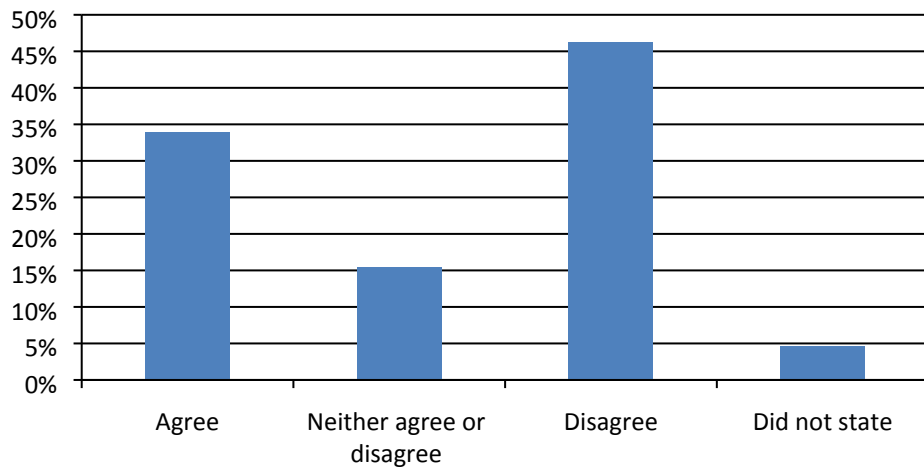
Licencing Reduces Overcrowding



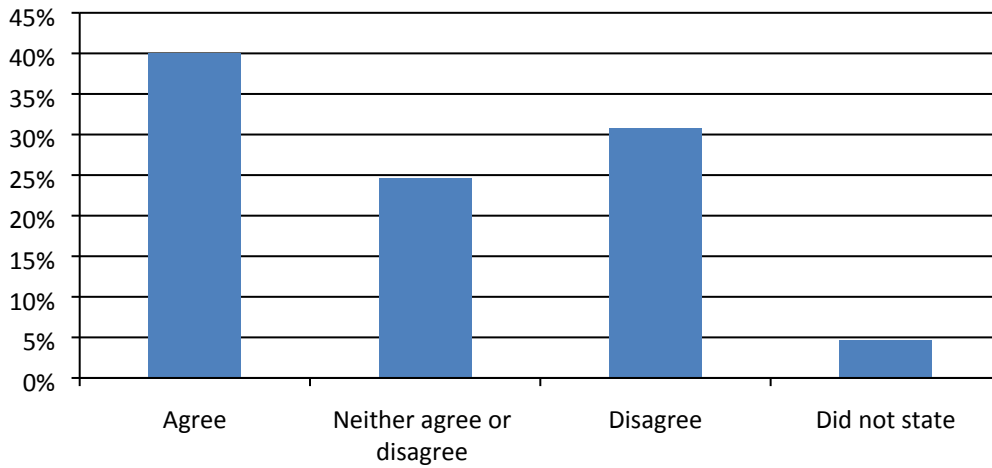
Licencing will increase Council's powers



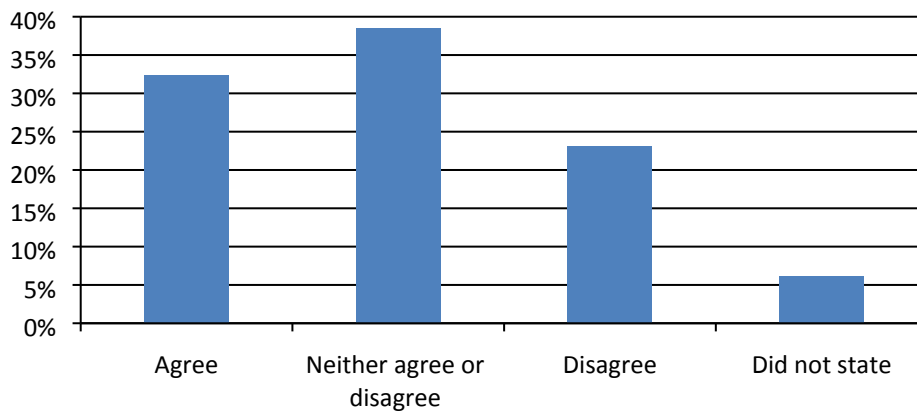
Amenity proposal will improves standards



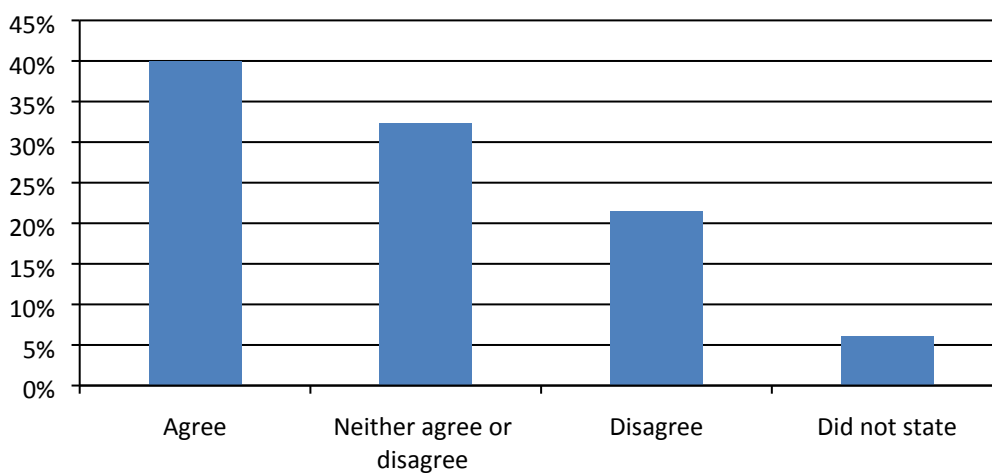
Proposed space standard is reasonable



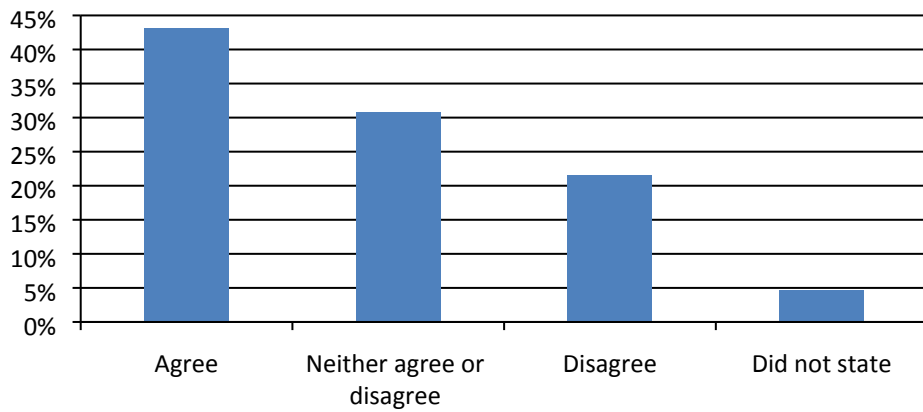
Proposed Living & Dining Rooms Space are adequate



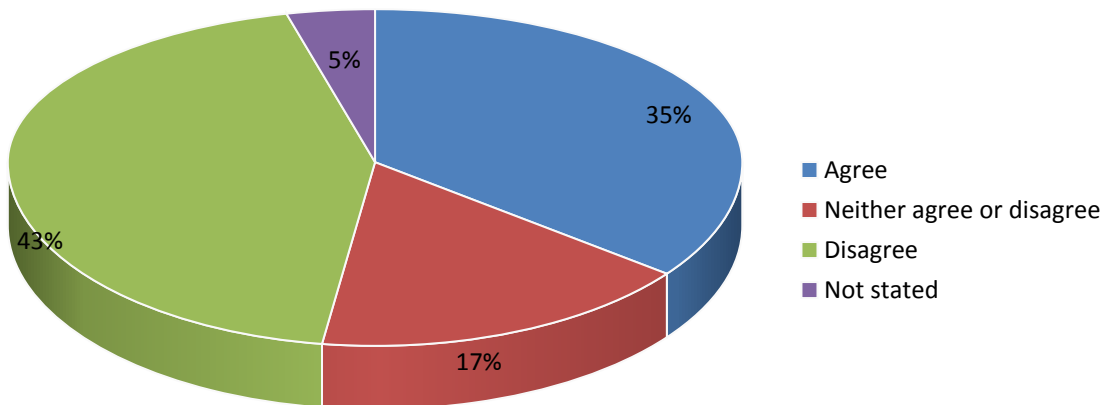
Proposed Kitchen facilities are reasonable



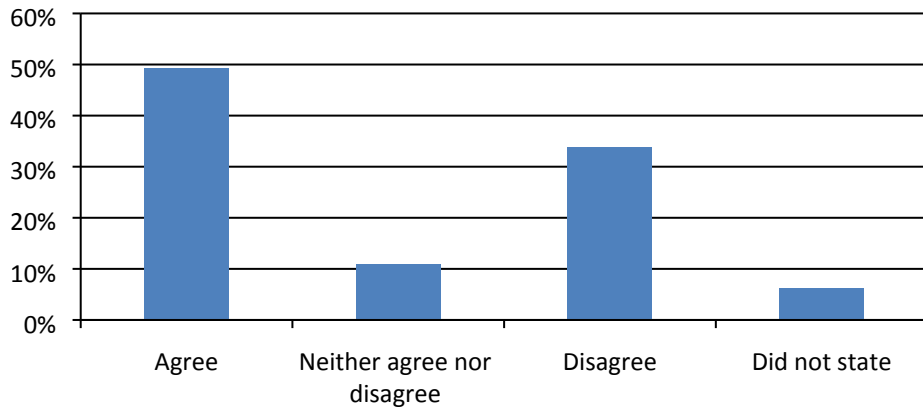
Proposed washing & WC standards are reasonable



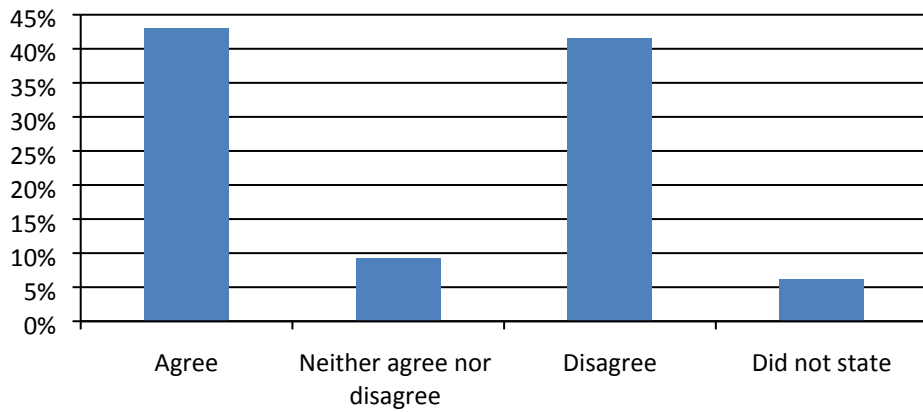
Agree or disagree on proposal for S257 HMOs



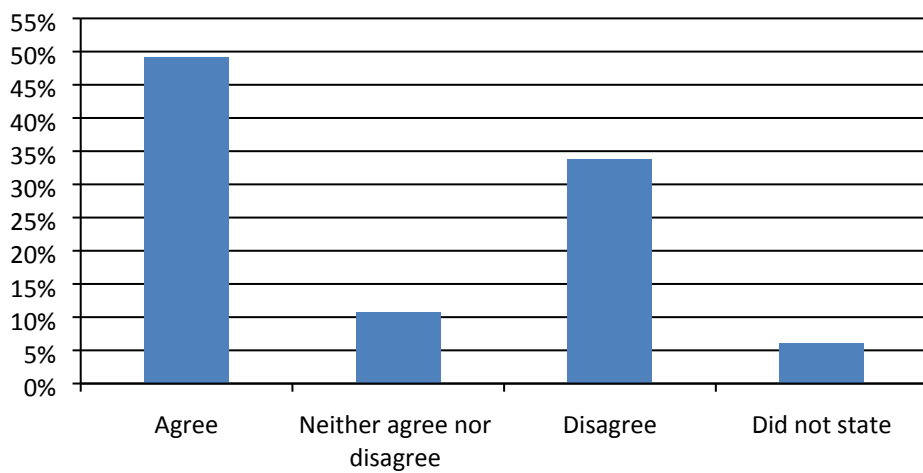
Poorly managed private let properties contribute to decline



Privately let HMOs contribution to decline

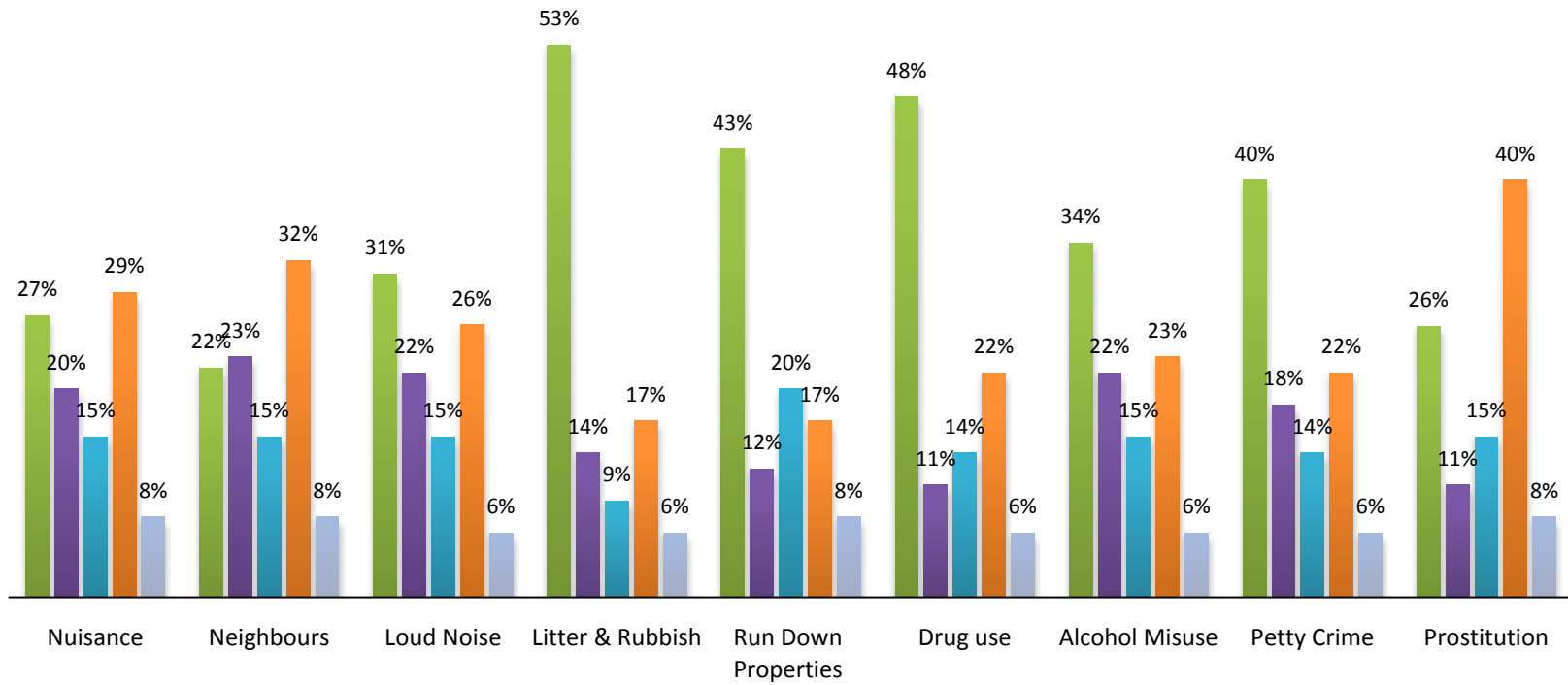


Landlord managing property effectively

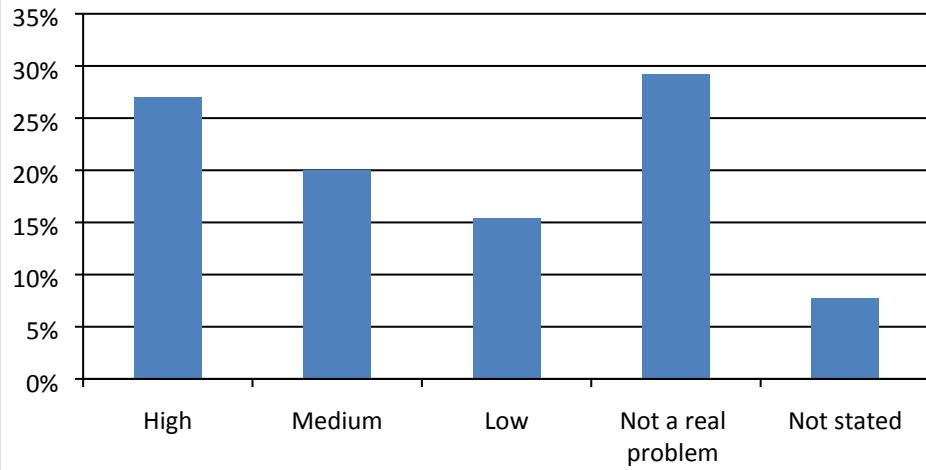


Perceived issues

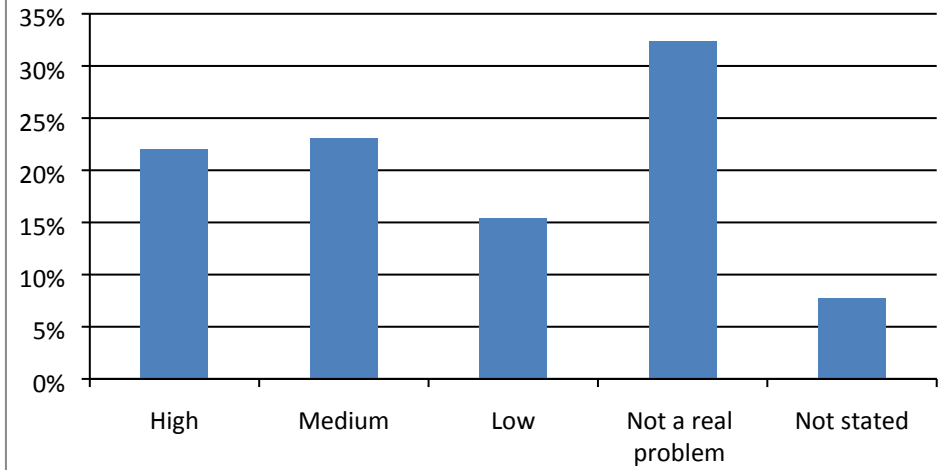
■ High ■ Medium ■ Low ■ Not a real problem ■ Not stated



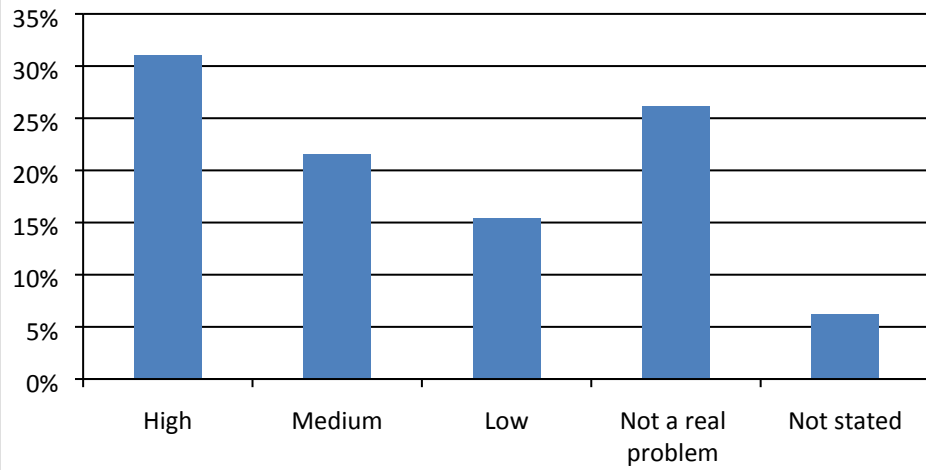
Nuisance



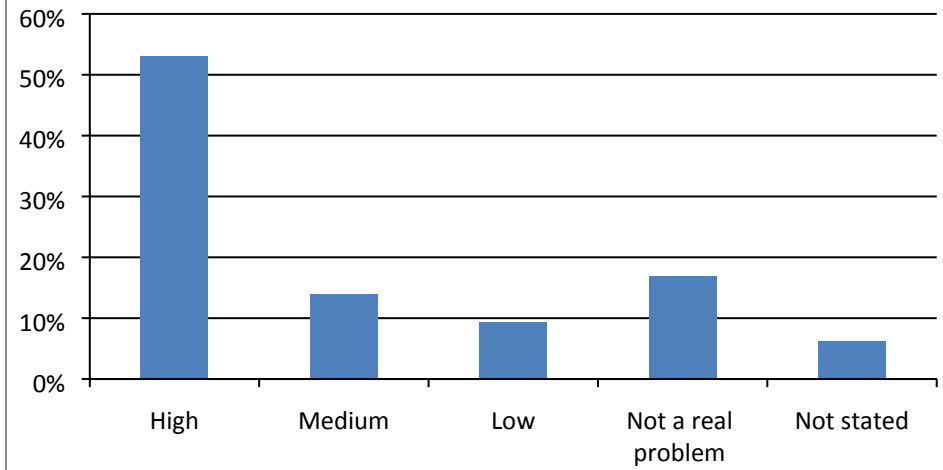
Neighbours



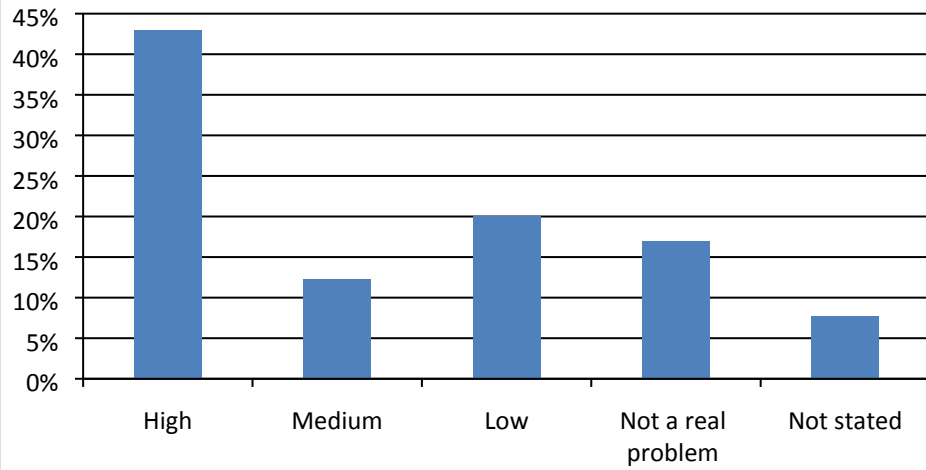
Loud Noise



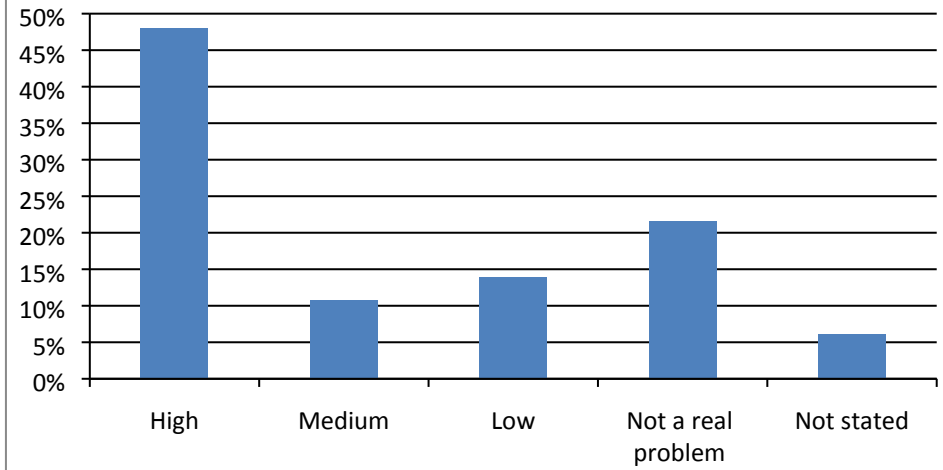
Litter & Rubbish



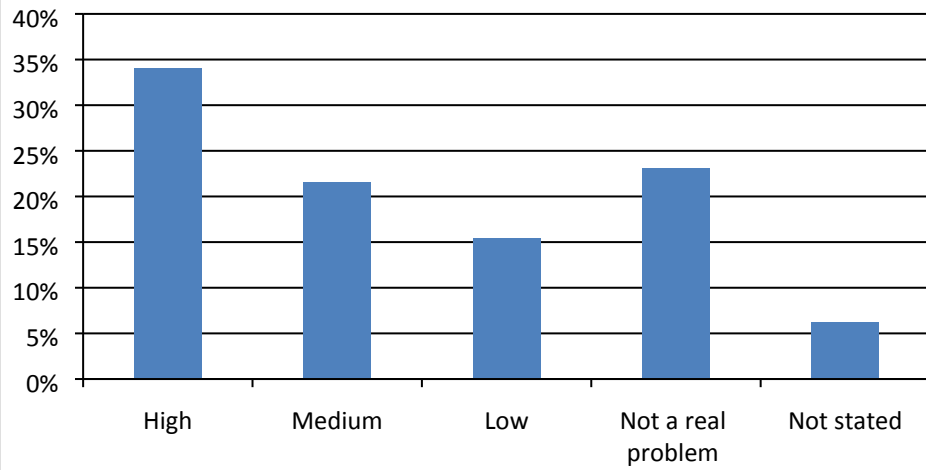
Run Down Properties



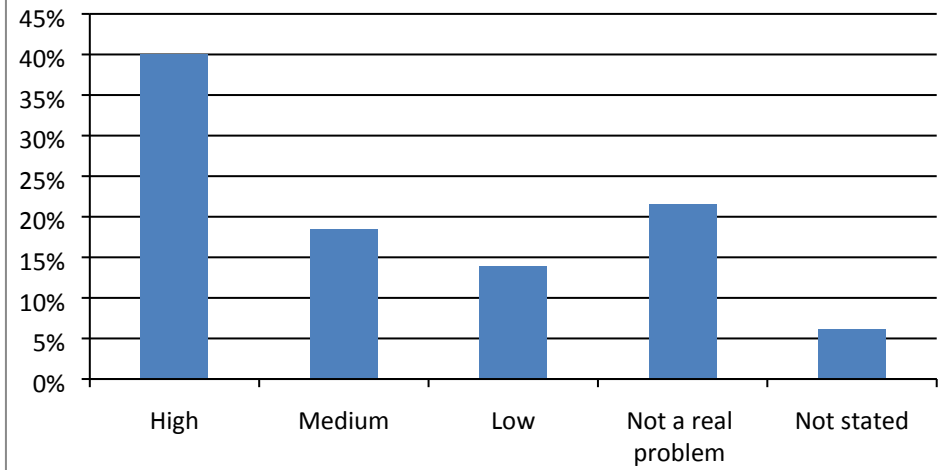
Drug use



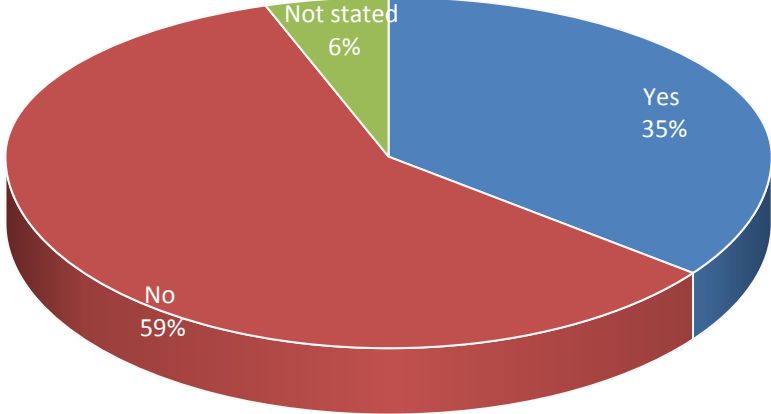
Alcohol Misuse



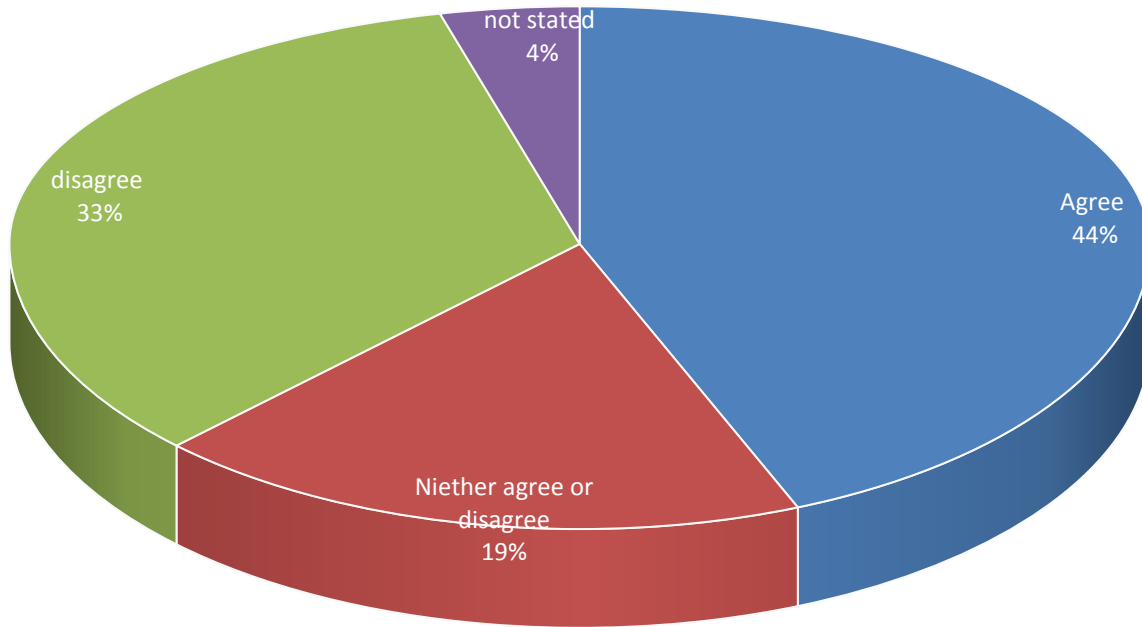
Petty Crime



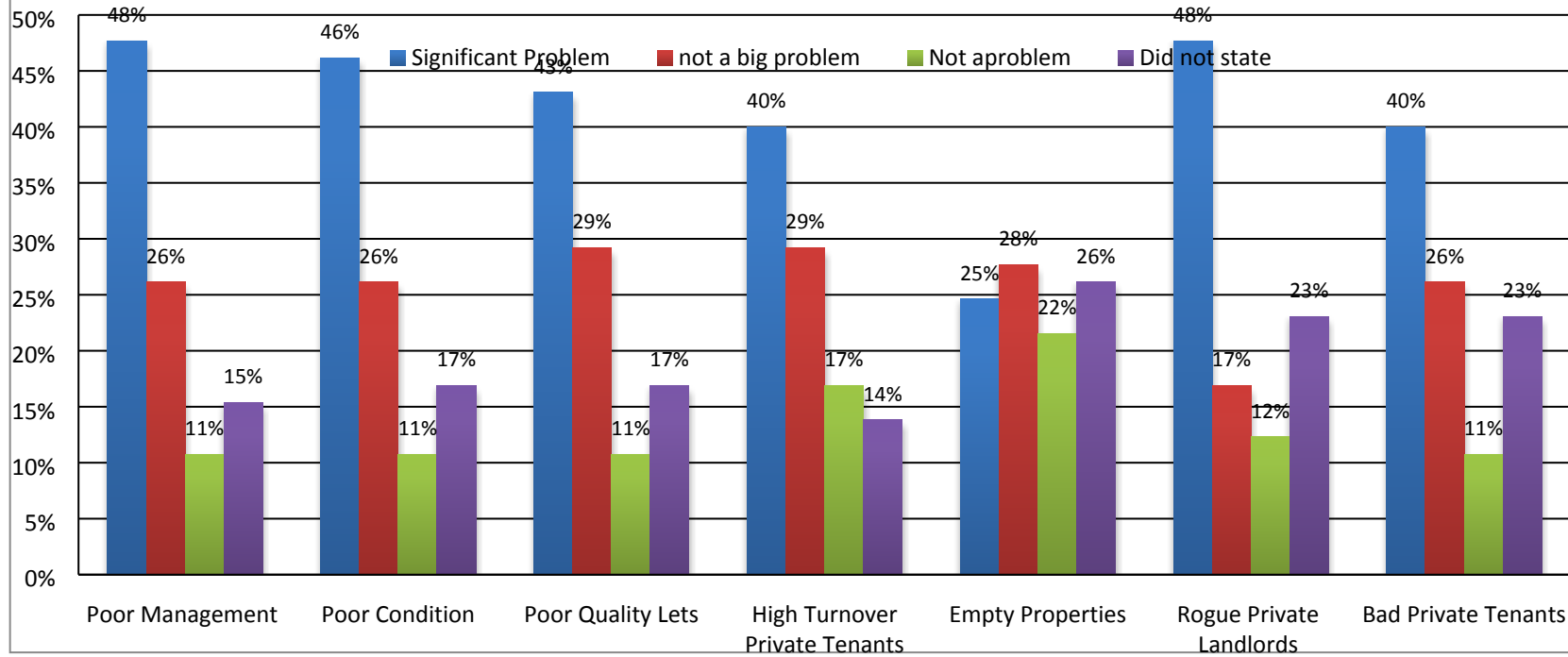
Adverse experience with HMOs in Tower Hamlets



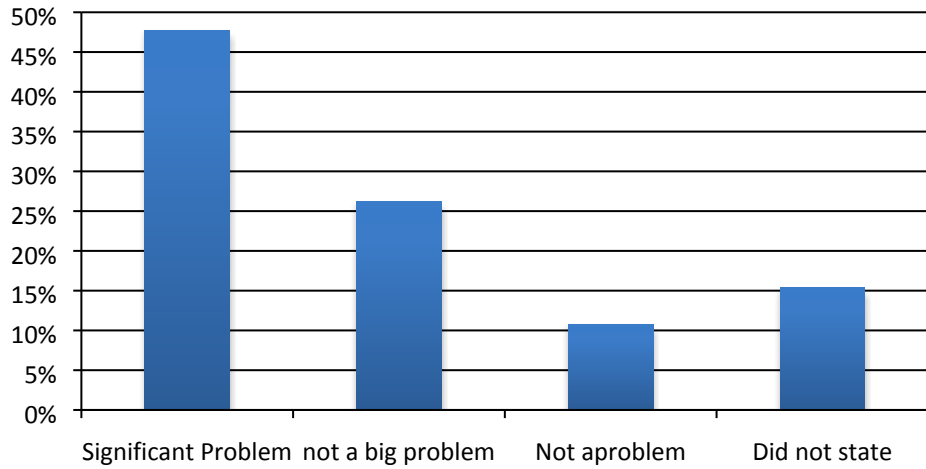
Private landlords in Tower Hamlets maintain their properties



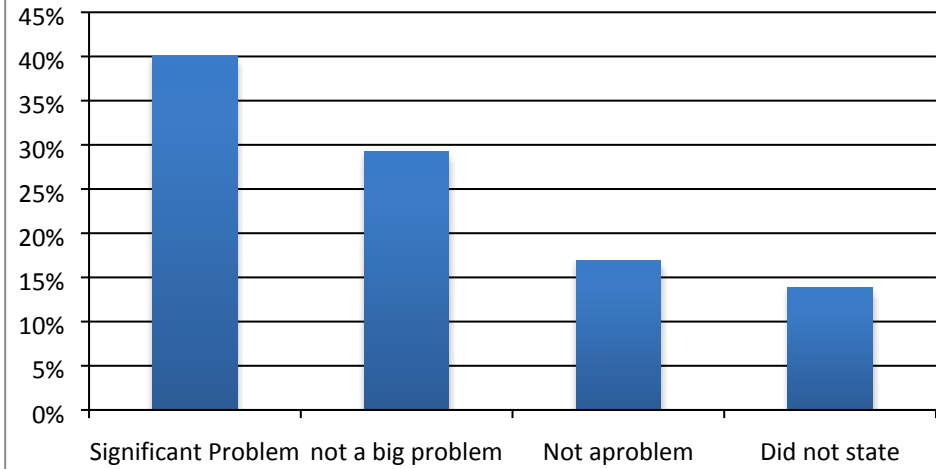
Problems with HMOs in Tower Hamlets



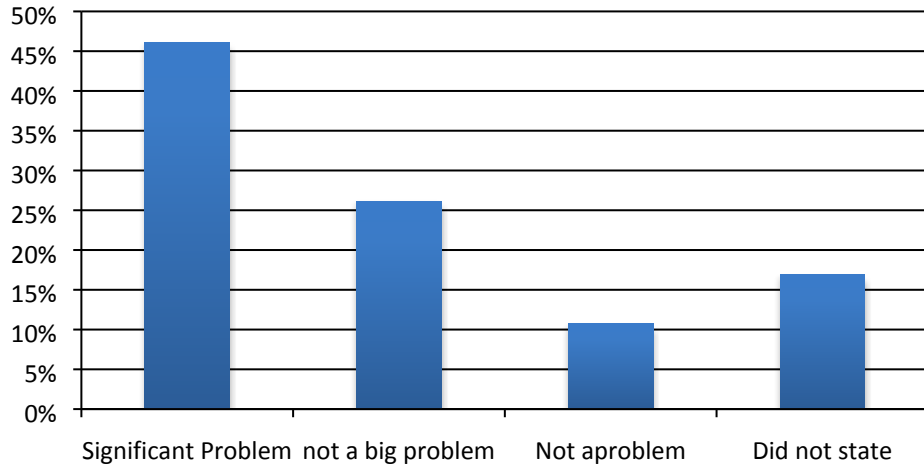
Poor Management



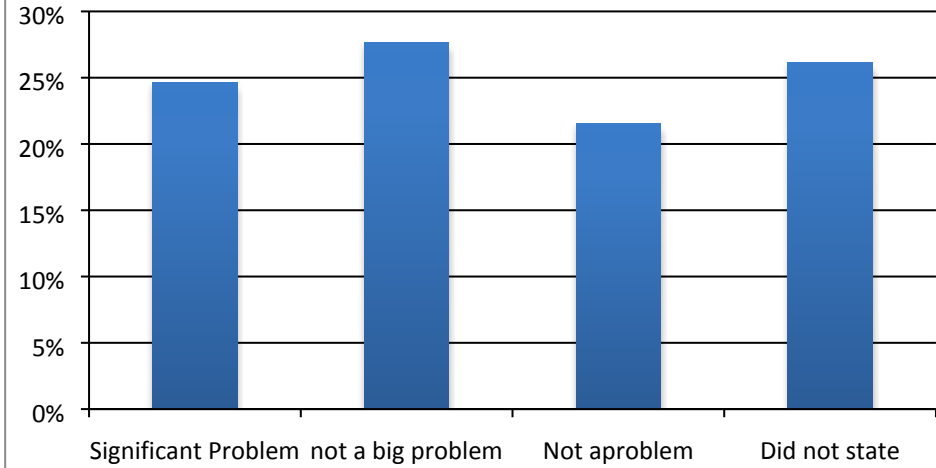
High Turnover Private Tenants



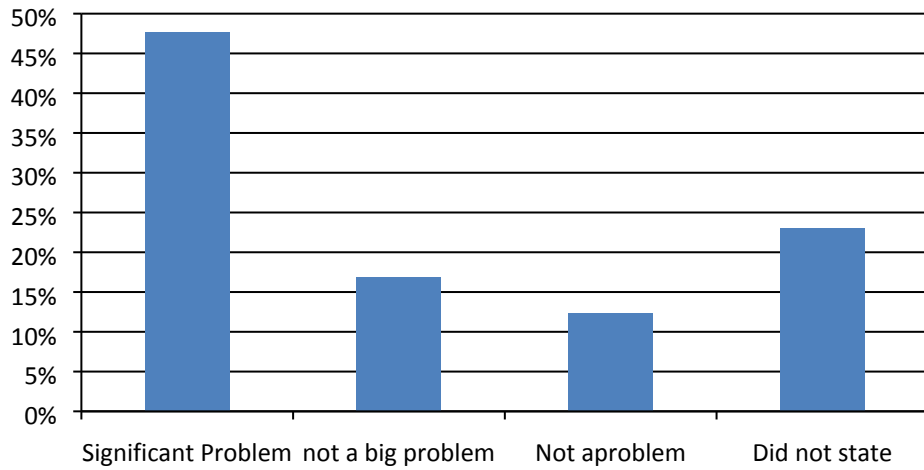
Poor Condition Lets



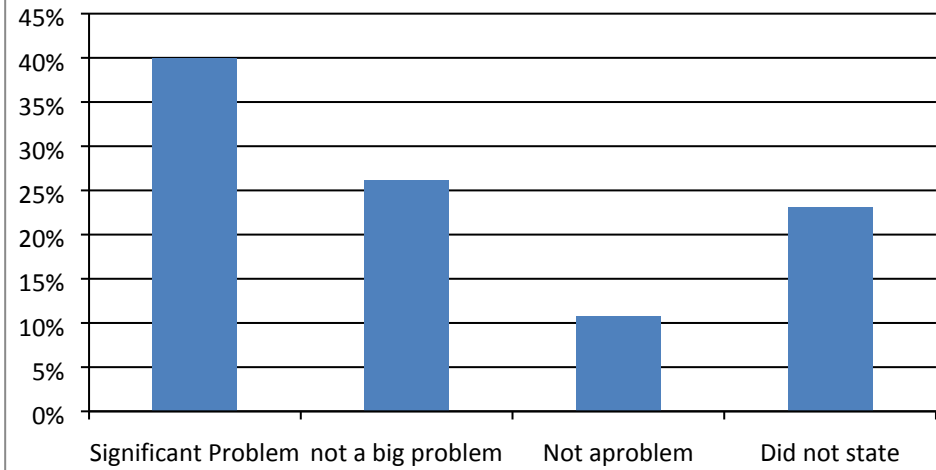
Empty Properties



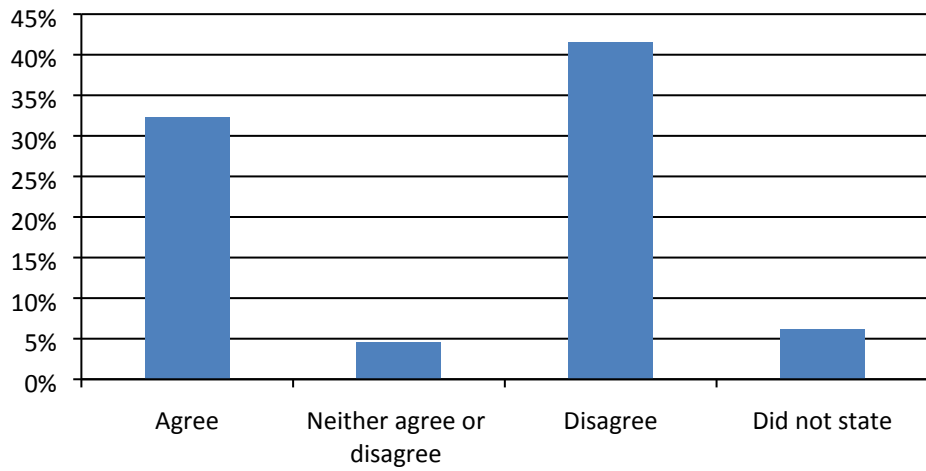
Rogue Private Landlords



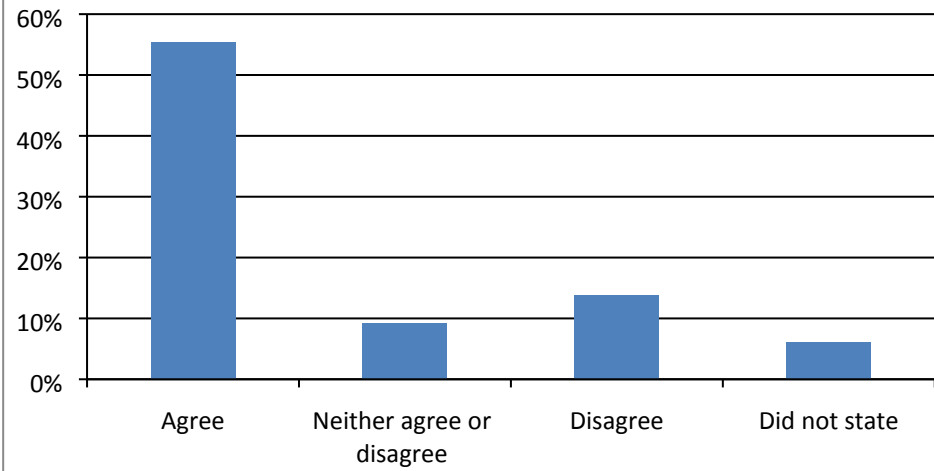
Bad Private Tenants



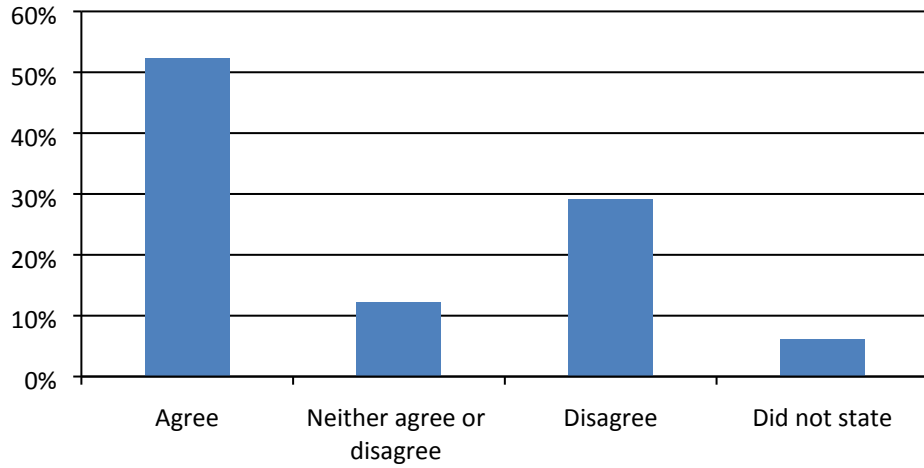
Licence Fee Reasonable



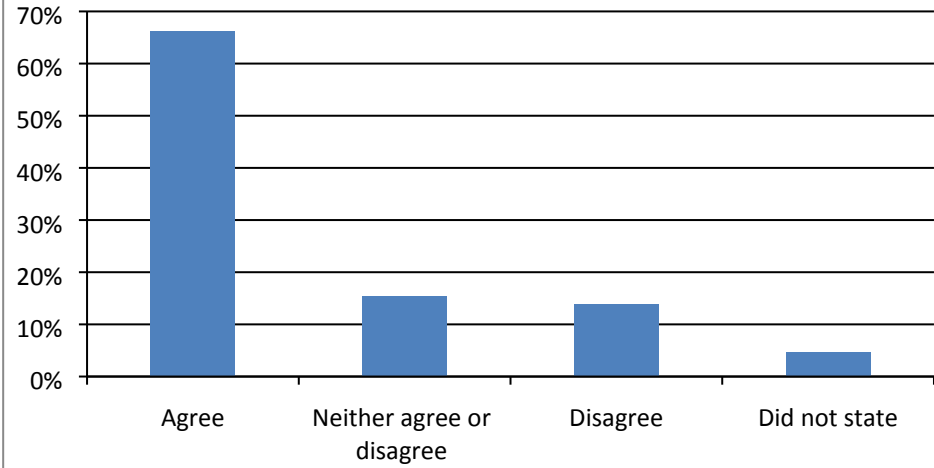
Fail Fit Proper Test Refusal



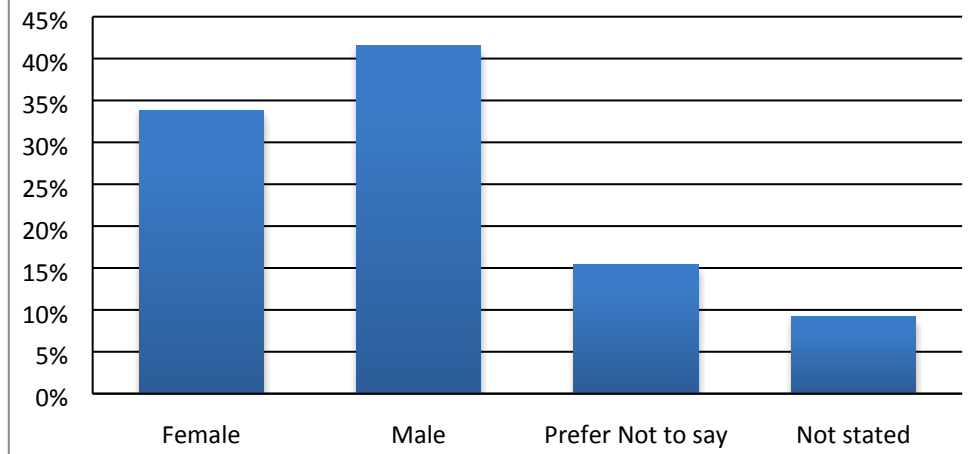
Monitoring Licenceholder Proposal



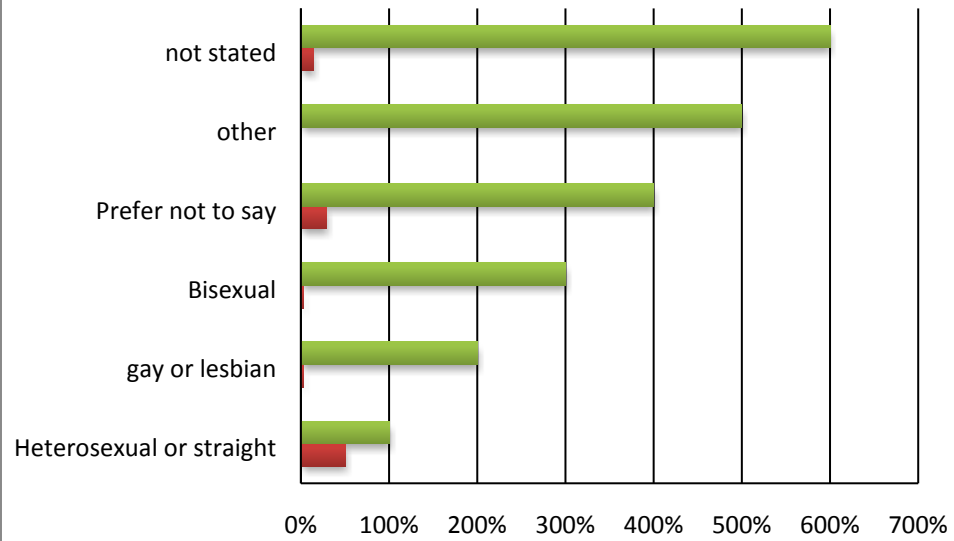
Licenceholder Refused if not Fit and Proper



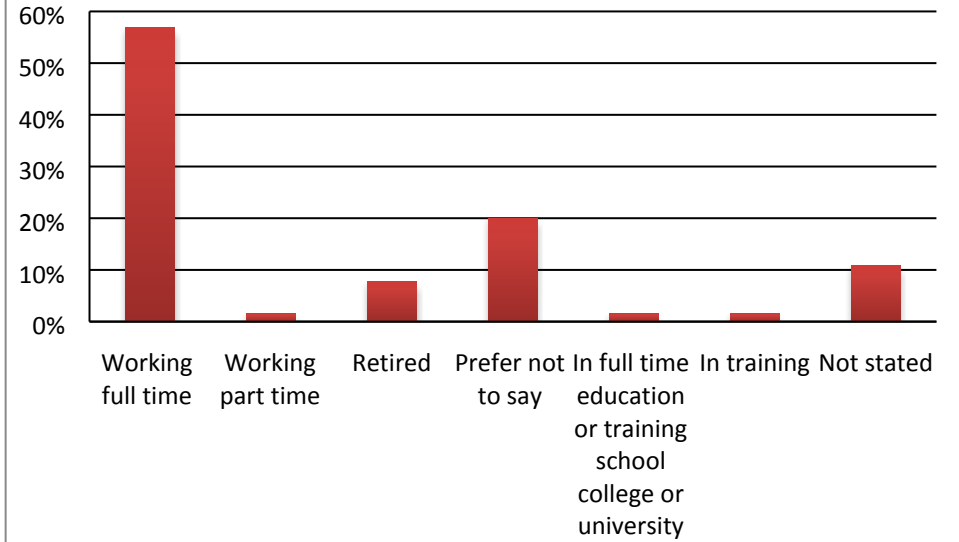
Response by gender



Sexual Orientation



Employment Status



Response by Ethnicity

