

Tower Hamlets Overview & Scrutiny Committee

Metropolitan Police Service Update

Detective Chief Superintendent Sue Williams

Tower Hamlets Police Borough Commander



**METROPOLITAN
POLICE**

TOTAL POLICING

NEW
SCOTLAND
YARD

Metropolitan Police Service Update

Updates

- Borough Commander's Vision
- Tower Hamlets Policing Priorities
- MOPAC Priorities
- The Partnership Model
- Counter Terrorism
- Drugs & Alcohol related Anti-Social Behaviour
- Sir Eric Pickles Report concerning Electoral Fraud



**METROPOLITAN
POLICE**

TOTAL POLICING

NEW
SCOTLAND
YARD

Metropolitan Police Service Update

The Borough Commander's Vision

To be the best performing BOCU in the Met
Empowering staff to achieve success

This will enable us to;

Provide a quality service to victims
of crime

To reduce crime on Tower Hamlets

Increase Community Confidence

Our strategic priorities

Reduce ASB & Violence (including
Domestic Abuse)

Deliver HT's Strategic Assessment
Priorities

Provide a safe working
environment for our staff

The values of the Met underpinning everything we do



**METROPOLITAN
POLICE**

TOTAL POLICING

NEW
SCOTLAND
YARD

Metropolitan Police Service Update

Tower Hamlets Policing Priorities

- Anti-Social Behaviour (including Drugs & Street Crime)
- Violence With Injury (including Domestic Abuse & Knife Crime)
- Gangs & Youth
- Offender Management



**METROPOLITAN
POLICE**

TOTAL POLICING

NEW
SCOTLAND
YARD

Metropolitan Police Service Update

Priorities of The Mayor's Office for Policing and Crime

- Neighbourhood Policing
- Keeping children & young people safe
- Tackling violence against women & young girls
- Tackling hate crime / extremism & terrorism
- Improving the Community Justice System



**METROPOLITAN
POLICE**

TOTAL POLICING

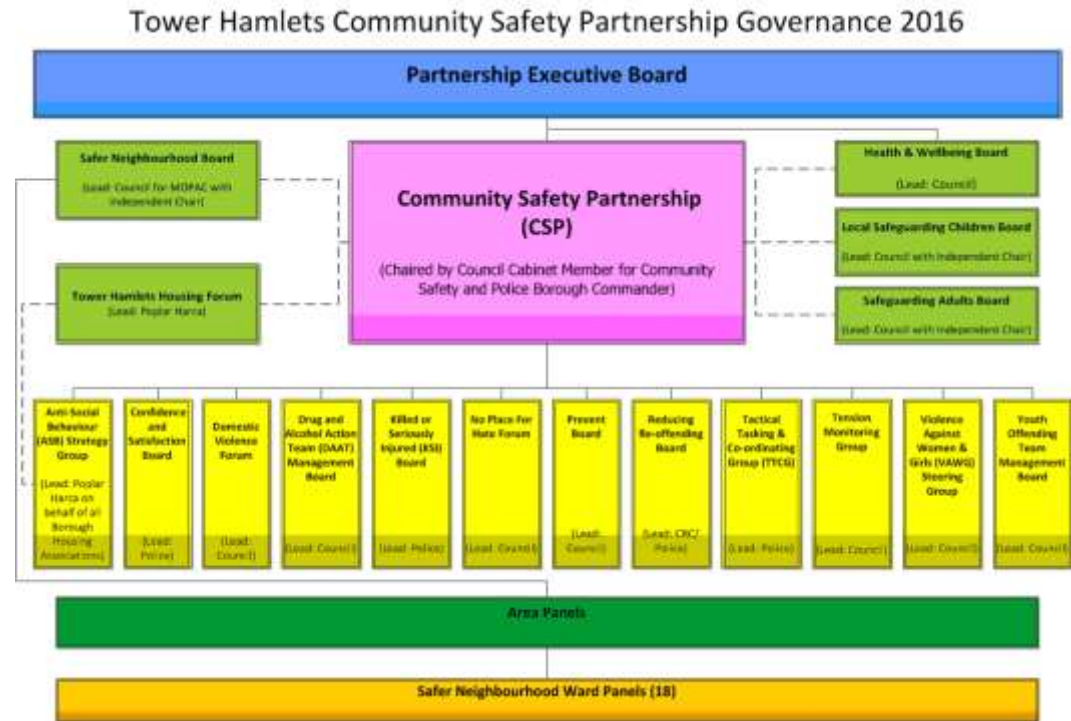
NEW
SCOTLAND
YARD

Metropolitan Police Service Update

The Partnership Model

Update

The Partnership Model is currently under review.



**METROPOLITAN
POLICE**

**NEW
SCOTLAND
YARD**

Metropolitan Police Service Update

Counter Terrorism

Update

- Threat Level = SEVERE
- Crowded Places; Canary Wharf, Tower of London, St. Katherine's Dock, East London Mosque & The Royal London Hospital to name a few.
- Linking local policing in with both the London & National CT picture.



**METROPOLITAN
POLICE**

TOTAL POLICING

NEW
SCOTLAND
YARD

Metropolitan Police Service Update

Counter Terrorism

Operation Hercules

- 600 additional firearms officers
- Increased visibility
- A range of tactics



**AFTER RECENT ATTACKS IN EUROPE,
ADDITIONAL ARMED POLICE OFFICERS
WILL PATROL THE STREETS OF THE UK**



**METROPOLITAN
POLICE**

**NEW
SCOTLAND
YARD**

Metropolitan Police Service Update

Counter Terrorism

Russell Square

- Terrorism?
- 1 person murdered
- 5 people injured
- Police detain with TaSer
- Mental Health Crisis

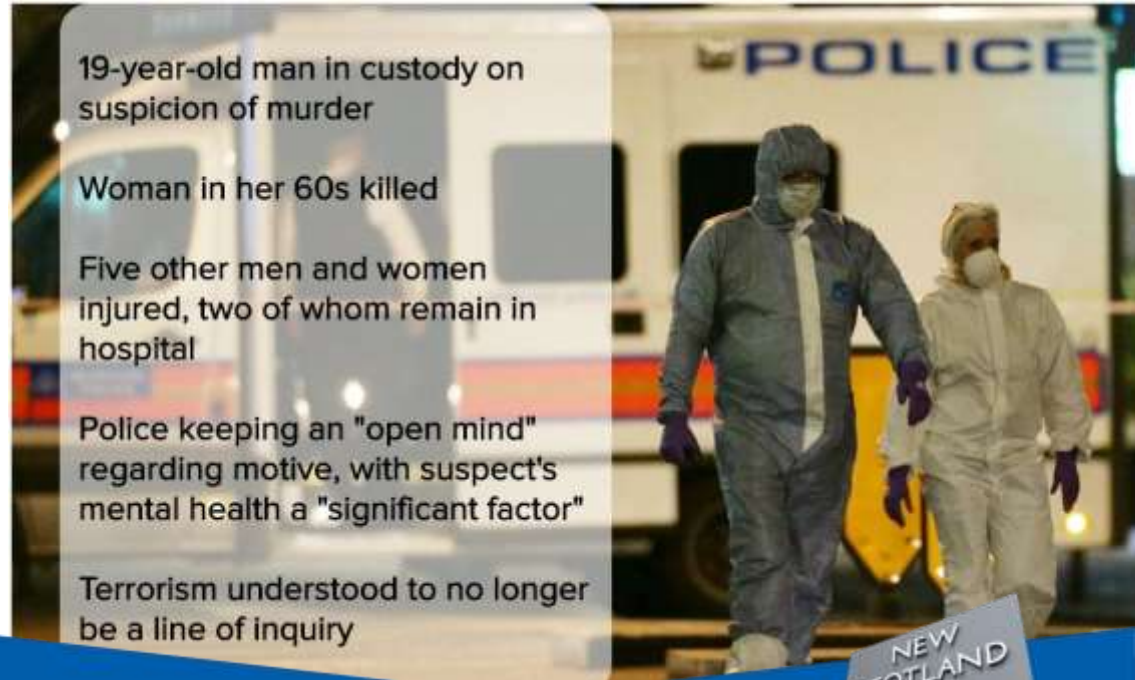
19-year-old man in custody on suspicion of murder

Woman in her 60s killed

Five other men and women injured, two of whom remain in hospital

Police keeping an "open mind" regarding motive, with suspect's mental health a "significant factor"

Terrorism understood to no longer be a line of inquiry



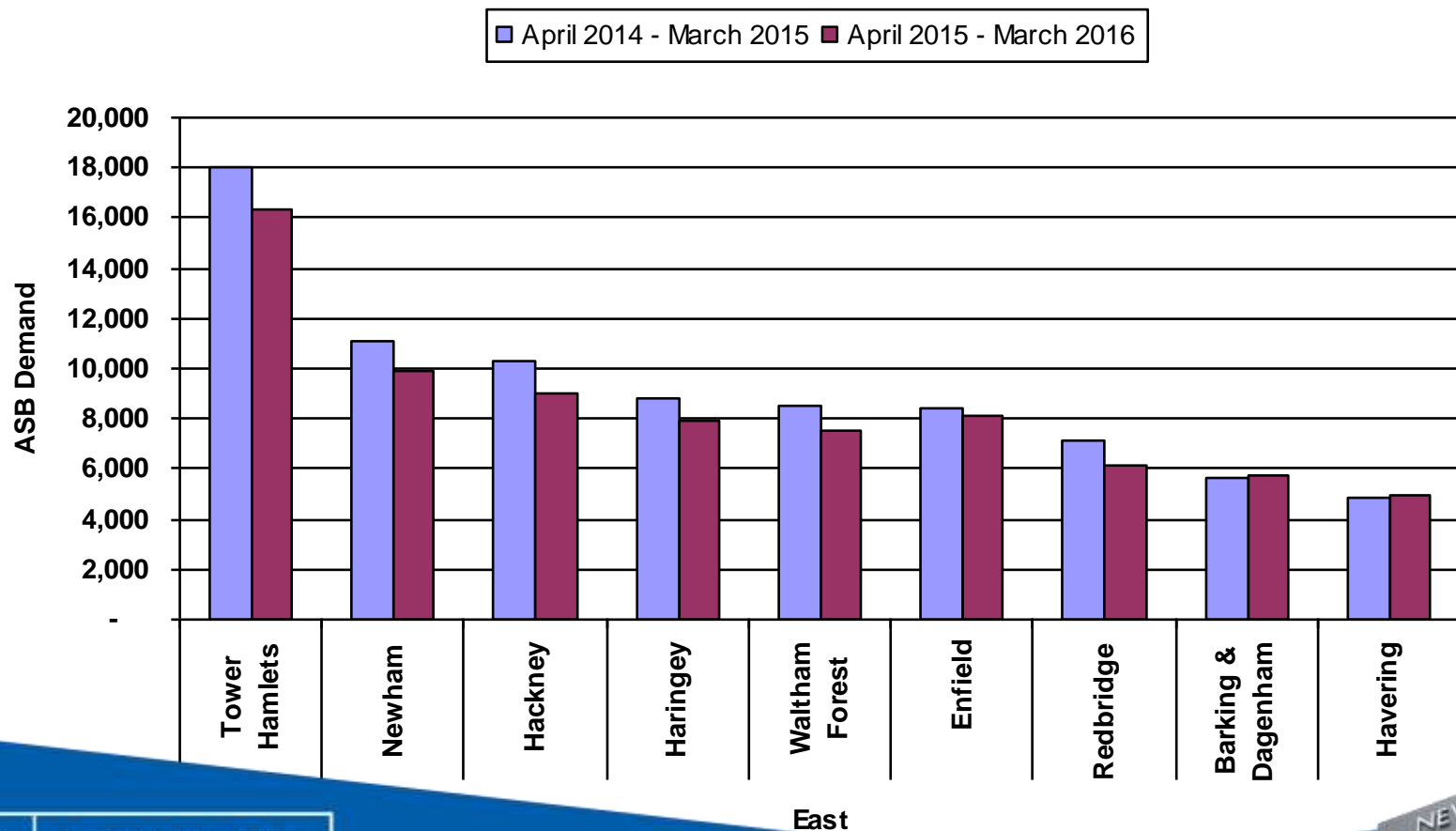
**METROPOLITAN
POLICE**

NEW
SCOTLAND
YARD

Metropolitan Police Service Update

Drugs & Alcohol related Anti-Social Behaviour

ASB Volumes Rolling 12 Month Comparison



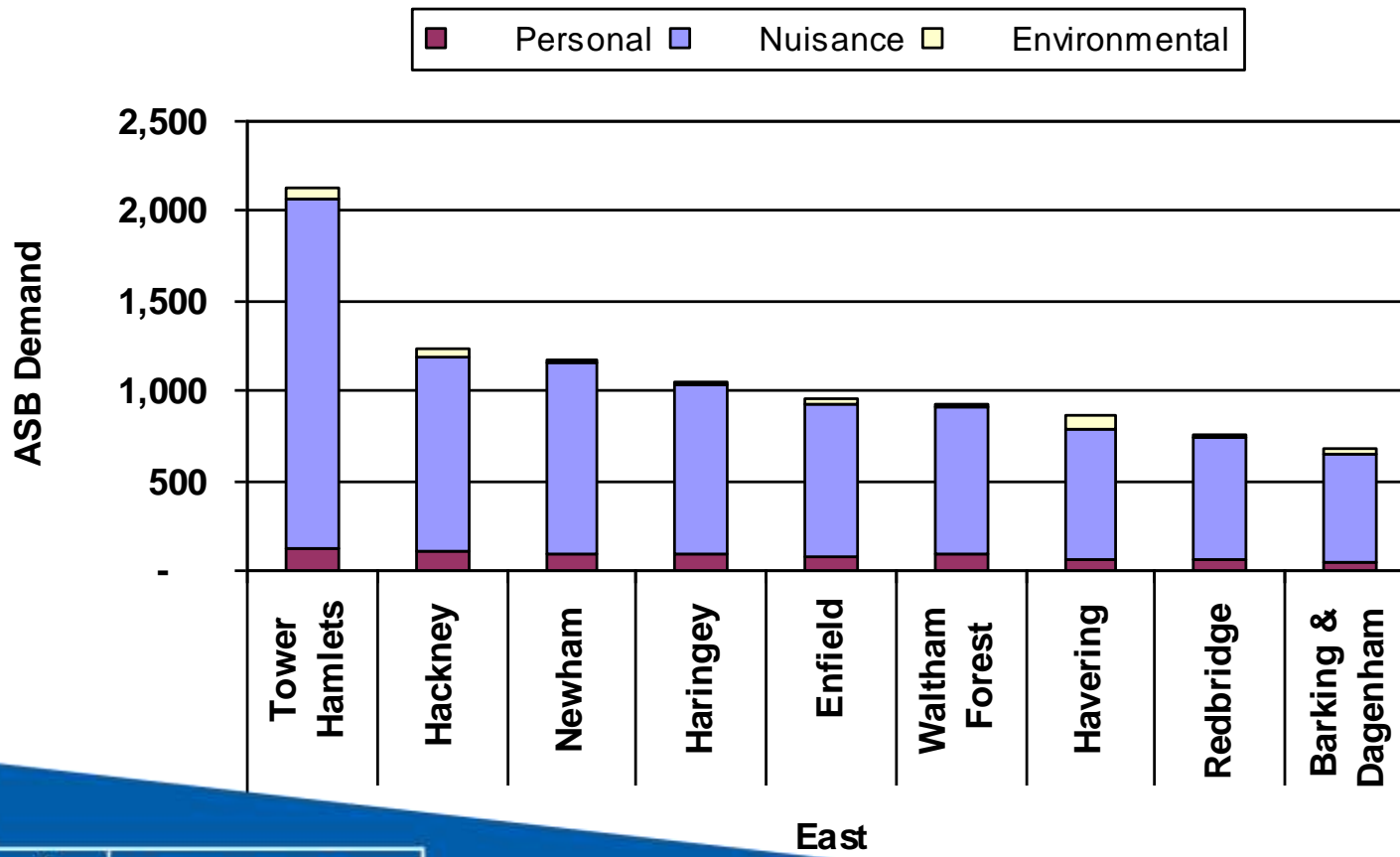
**METROPOLITAN
POLICE**

NEW
SCOTLAND
YARD

Metropolitan Police Service Update

Drugs & Alcohol related Anti-Social Behaviour

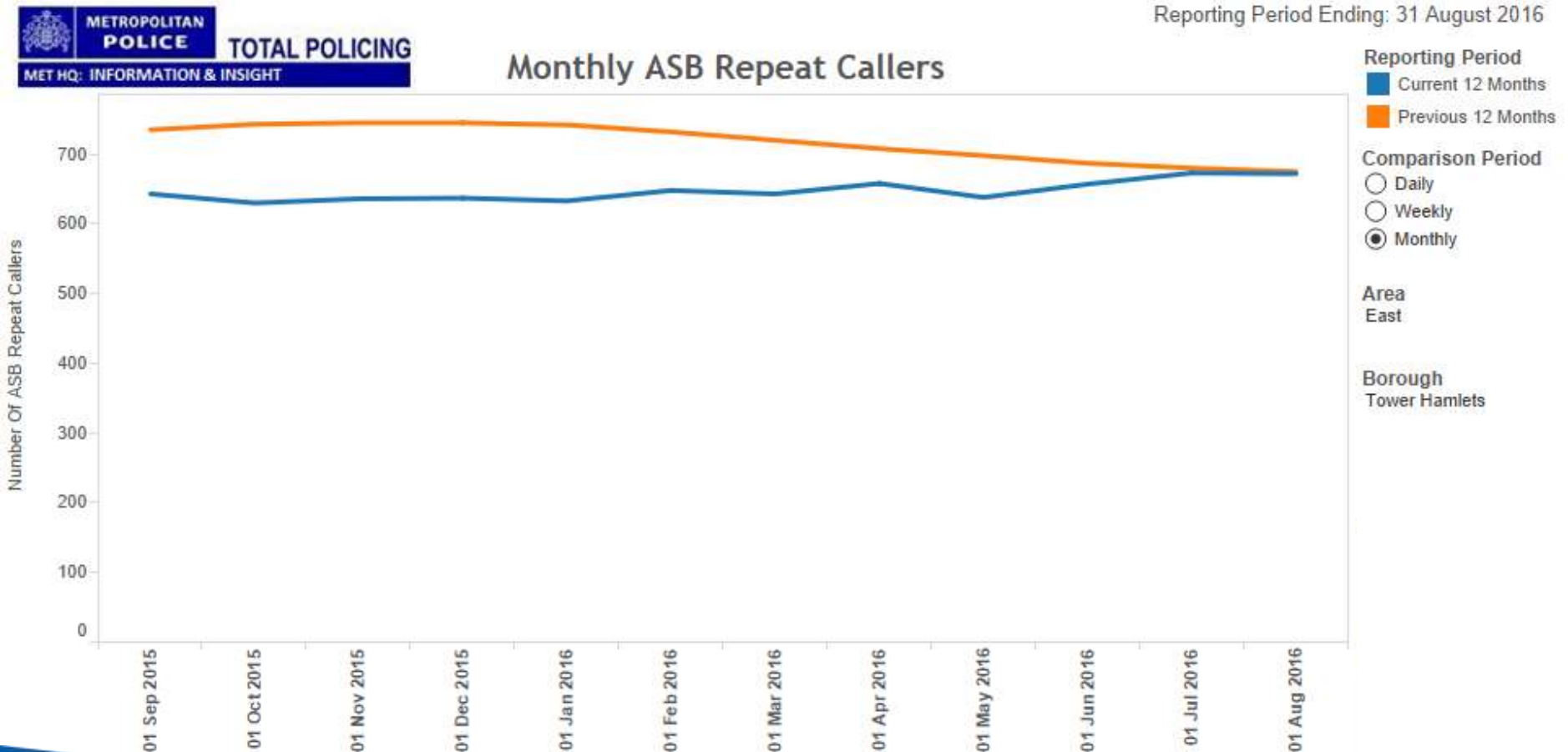
ASB Demand Breakdown July 2016



Metropolitan Police Service Update

Drugs & Alcohol related Anti-Social Behaviour

Reporting Period Ending: 31 August 2016



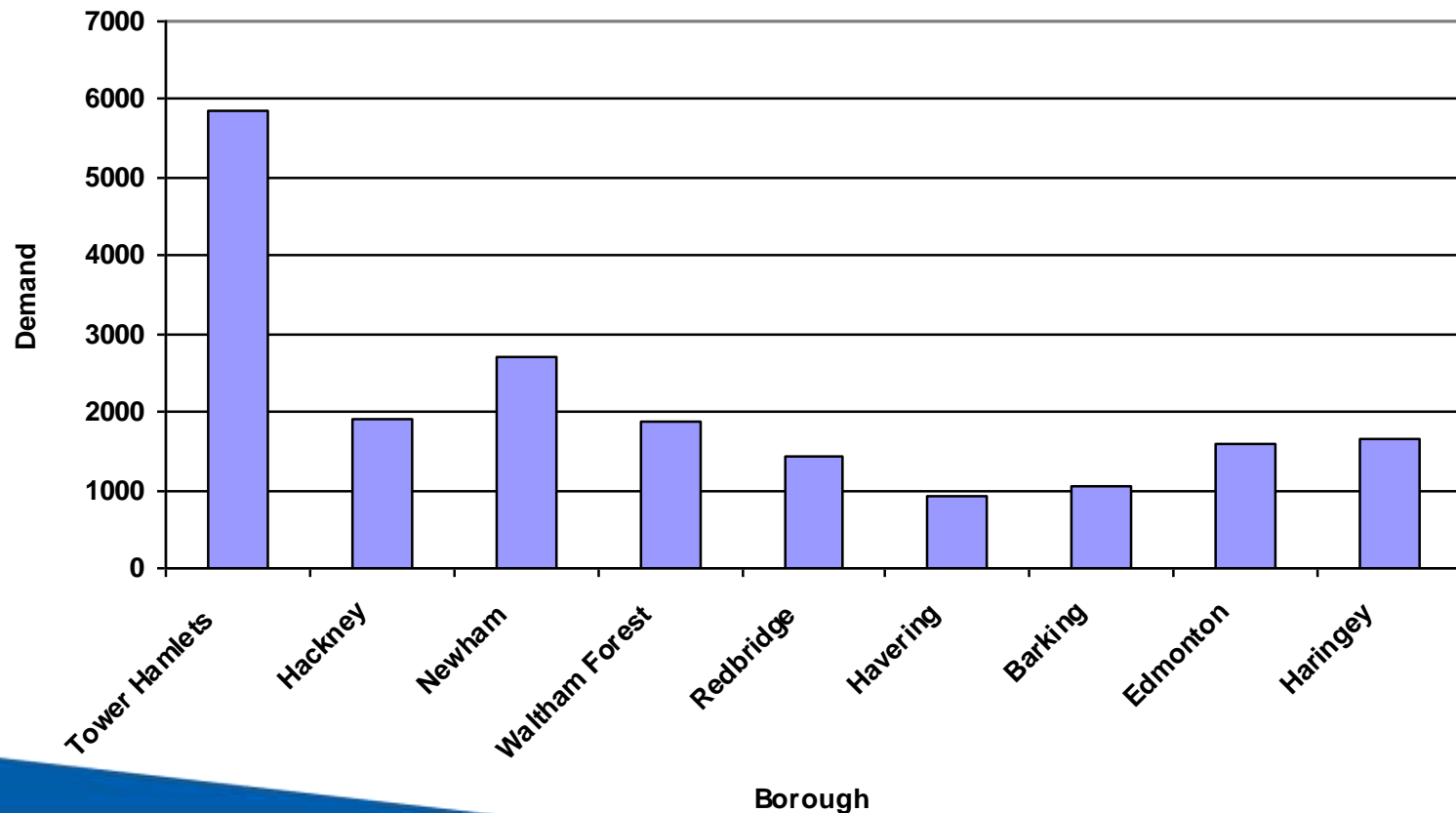
**METROPOLITAN
POLICE**



Metropolitan Police Service Update

Drugs & Alcohol related Anti-Social Behaviour

Level of Police Demand Concerning Drugs Calls [01/03/15 to 29/02/16]



**METROPOLITAN
POLICE**

NEW
SCOTLAND
YARD

Metropolitan Police Service Update

Drugs & Alcohol related Anti-Social Behaviour

Police activity

- New Police ASB hub incorporating Vulnerability Assessment and victims care/call back functions
- Staffing a daily ASB/disorder unit (Police and 2 THEOs) responsible for responding to ASB and proactively target ASB hotspots in support of ongoing SNT and Partnership activity
- Review of Police call handling procedures for ASB calls
- Continuing bi weekly ASB ops Tasking meeting



**METROPOLITAN
POLICE**

TOTAL POLICING

NEW
SCOTLAND
YARD

Metropolitan Police Service Update

Drugs & Alcohol related Anti-Social Behaviour

Police activity continued

- 2 monthly repeat/vulnerable callers/perpetrators Problem Solving meeting - ASB PAG
- New ASB warning notices being ordered to enable enhanced collection and sharing of data around individuals involved in ASB - improving processes for identifying and pursuing repeat offenders
- Securing Central resources to assist borough Police in enforcement activity in relation to ASB/Street Crime in key areas. TSG Units and Dog Support have been secured for a two month period over the summer to provide enhanced patrols and interventions coordinated by the SNTs.



**METROPOLITAN
POLICE**

TOTAL POLICING

NEW
SCOTLAND
YARD

Metropolitan Police Service Update

Drugs & Alcohol related Anti-Social Behaviour

Licensing matters

1. Tower Hamlets continues to see a steady growth of Night Time Economy.
2. PubWatch is just one of the strategies being used to reduce alcohol-related crime.
3. Changes such as the Weekend Night Tube present implications on future demand.



**METROPOLITAN
POLICE**

TOTAL POLICING

NEW
SCOTLAND
YARD

Metropolitan Police Service Update

Sir Eric Pickles Report concerning Electoral Fraud

The Metropolitan Police Service response to The Daily Telegraph's article on Friday 12th August 2016.



**METROPOLITAN
POLICE**

TOTAL POLICING

NEW
SCOTLAND
YARD

Metropolitan Police Service Update

Questions?



**METROPOLITAN
POLICE**

TOTAL POLICING

NEW
SCOTLAND
YARD

Freedom of Information Act

Protective Marking

Publication Scheme Y/N:

Title:

Summary:

Branch / OCU:

Date created:

Review date:

Version:

Author:



**METROPOLITAN
POLICE**

TOTAL POLICING

NEW
SCOTLAND
YARD