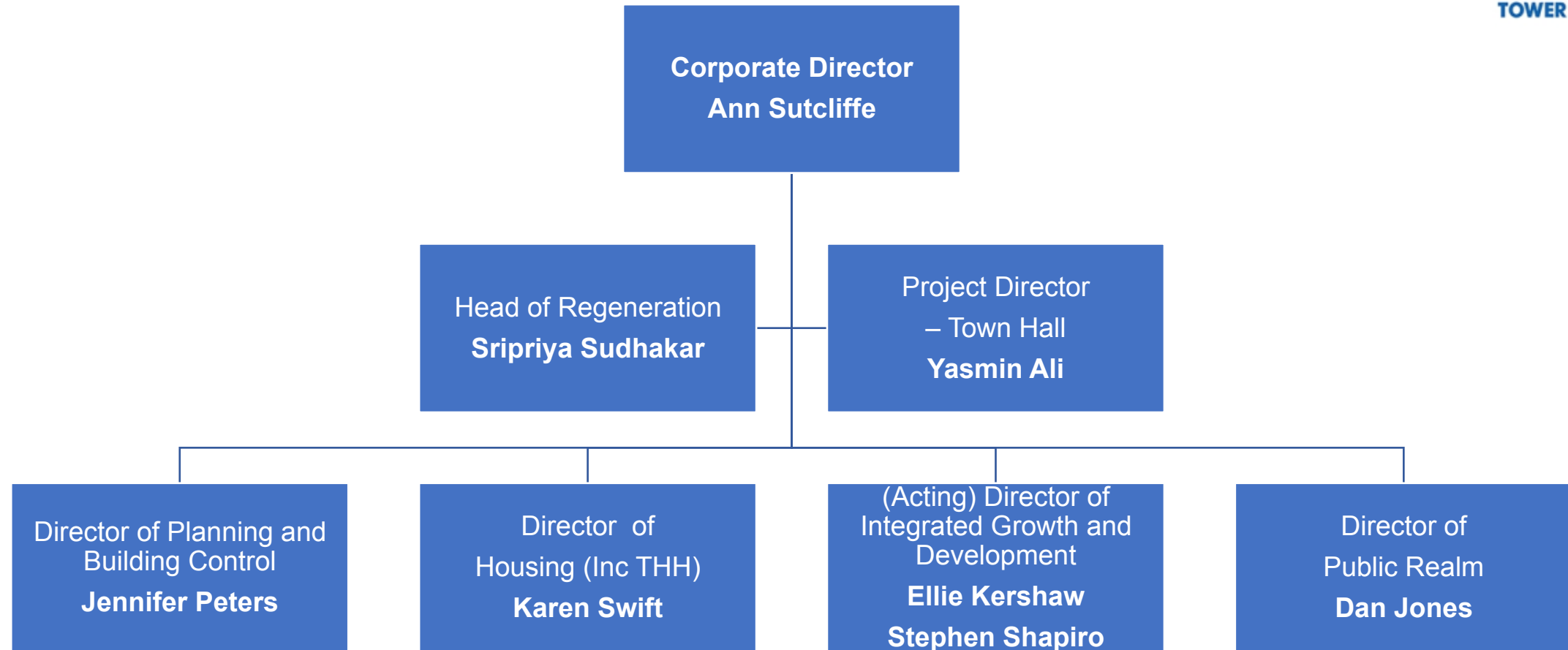


# Overview of Place Directorate

Ann Sutcliffe



# Place Directorate - Creating a great place where people can prosper



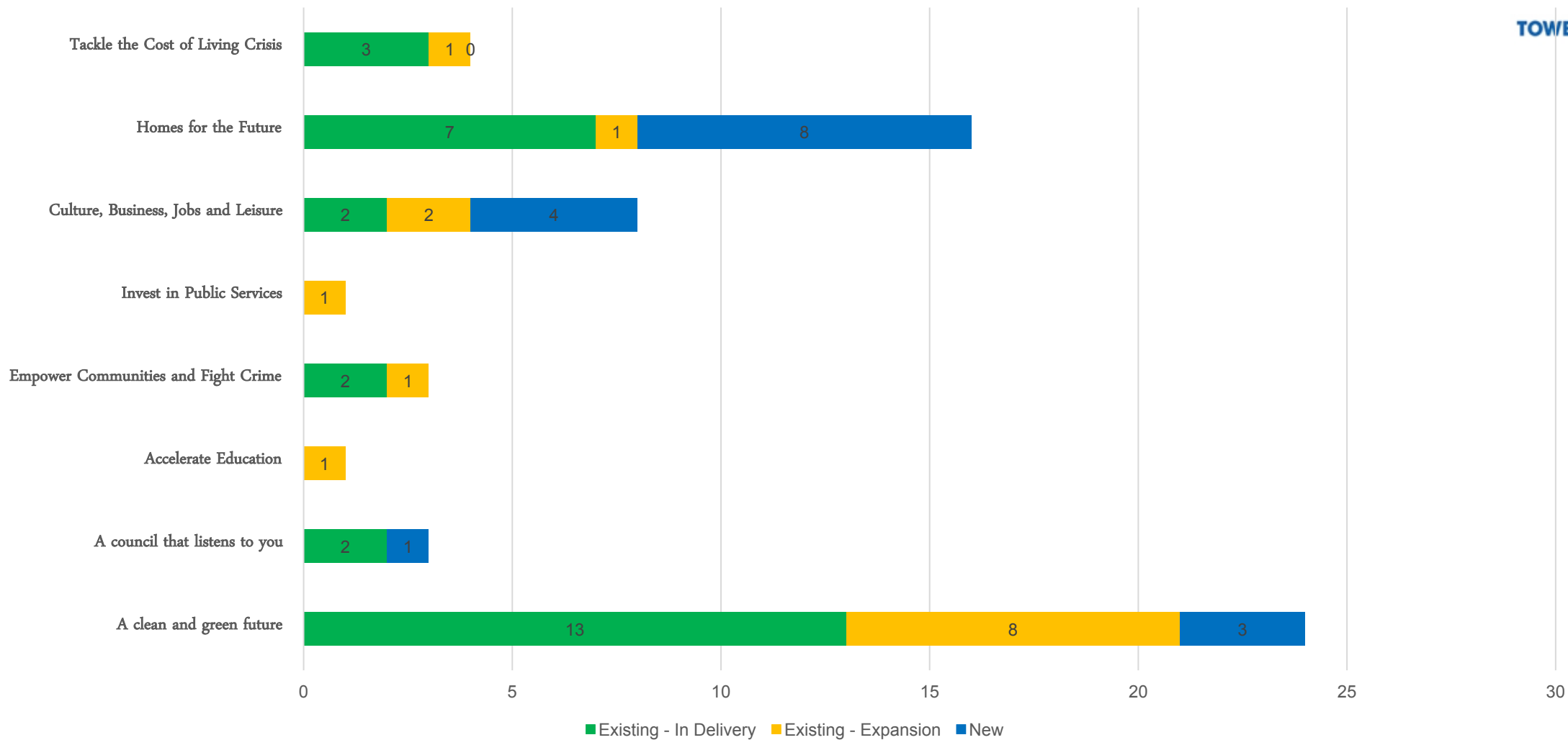
# Some of the key strategies.



Planning and Building Control	Housing	Integrated Growth and Development	Public Realm	Regeneration
<p><a href="#">Local Plan</a>  <a href="#">Supplementary Planning Guidance</a></p>	<p><a href="#">Housing Strategy 2016-2021</a>  <a href="#">THH Business Plan</a>  <a href="#">Housing Allocations Policy</a>  <a href="#">Private Sector Housing Renewal Policy</a>  <a href="#">Net Zero Carbon Plan</a></p>	<p><a href="#">Growth and Economic Development Plan 2018-2023</a>                      (towerhamlets.gov.uk)  <a href="#">Town Centre and High Streets Strategy</a>  <a href="#">Asset Strategy</a>  <a href="#">Community Benefit</a>  <a href="#">Rent Reduction</a></p>	<p><a href="#">Transport Strategy</a>  <a href="#">Liveable Streets and School Streets</a>  <a href="#">Waste Strategy</a>  <a href="#">Local Implementation Programme 2011-2031</a>  <a href="#">Cycle Strategy 2016-2025</a>  <a href="#">Late Night Levy 2017 - Current</a>  <a href="#">Air Quality Action Plan</a>  <a href="#">Landlord Licensing Schemes</a></p>	<p><a href="#">Regeneration Approach</a></p>



### Place Pledge Status by Manifesto Topic



# Challenges & Priorities



- Change in demographics / Increase in demand
- Managing development and maximising benefits for residents
- Economic Climate / Cost of Living Crisis
- Demand for Housing / Affordability
- Environment and Climate Change
- Environmental Quality
- Place Shaping and Planning Infrastructure
- Regeneration
- Tackling Poverty
- Employment and Business Support
- Use of assets (E.g. property portfolio)
- Affordable Homes
- Reducing Overcrowding and Preventing Homelessness
- Net Zero Carbon and Air Pollution
- Waste Reduction and Street Cleanliness
- Sustainable Travel

