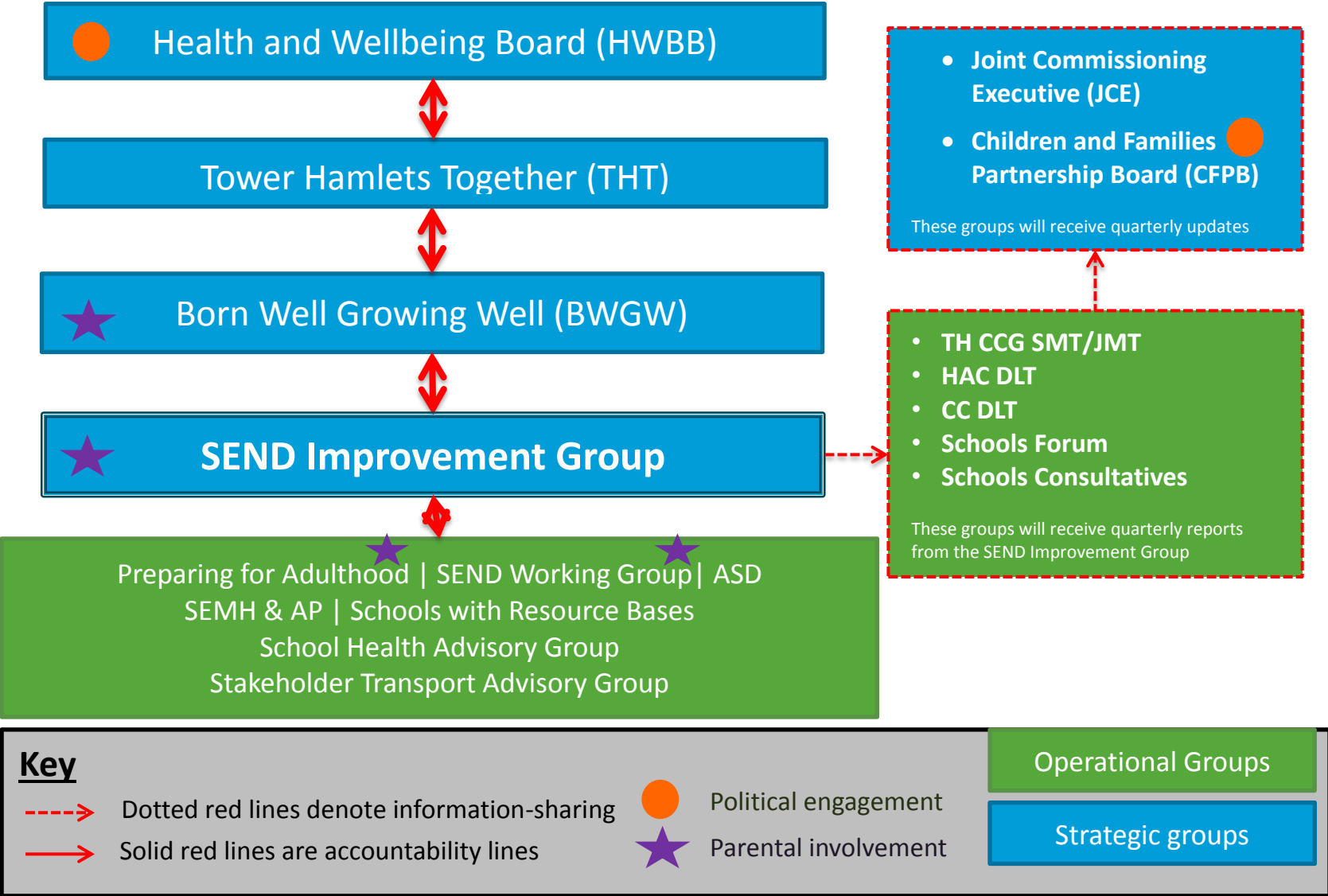


SEND GOVERNANCE MAP



OVERVIEW OF REPORTING

Group/Board	Frequency of SEND reporting	Purpose	Direct accountability?
Health and Wellbeing Board (HWBB)	Bi-annual	Decision making	Yes
Tower Hamlets Together (THT)	Quarterly	Decision making	Yes
Born Well Growing Well (BWGW)	Quarterly	Decision making	Yes
Children and Families Partnership Board (CFPB)	Quarterly	Information sharing	No
Joint Commissioning Executive (JCE)	Quarterly	Input	No
Schools Forum	Quarterly	Input	No
Schools Consultative <ul style="list-style-type: none"> • Primary • Secondary 	Quarterly	Discussion	No
Leadership Team Meetings <ul style="list-style-type: none"> • Children and Culture DLT • Health, Adults and Communities DLT • CCG SMT/JMT 	Quarterly	Discussion	No

OVERVIEW OF RELEVANT GROUPS

This section outlines the roles for each of the groups on the governance map, and how these interact with the local SEND system.

Accountability groups

The groups below outline how accountability works within the SEND System.

SEND Sub-groups

- **SEND Working Group**

The SEND Working Group exercises delegated authority from the SEND Improvement Group to oversee, monitor and recommend for approval the operational delivery and transformation of SEND services for children and young people in Tower Hamlets.

The remit of this Group includes the services for children and young people with SEND needs, and changes to these services in line with the joint SEND strategy and SEND inspection framework.

The Working Group should carry out the duties below on behalf of the joint LBTH and THCCG SEND Programme Board:

- Develop the work plan for the SEND Working Group, which will be signed off by the joint SEND Programme Board
- Oversee the delivery of the work plan, escalating to the joint SEND Programme Board, or other appropriate forum, any issues or risks to delivery which cannot be mitigated by the SEND Working Group
- Provide expert contributions to the development of the joint SEND strategy, preparations for a SEND inspection and any associated transformation to achieve the principles of the SEND Working Group.
- Within their respective organisations, members shall champion the work of the Working Group, and communicate relevant actions and messages to their colleagues
- Take individual and collective responsibility for delivering their team's commitments to implement the work plan.

The group includes professionals in local education and social care services, as well as health providers. The group is currently working on involving parents and carers.

- **Preparing for Adulthood Group**

Xxx

Other 'Information Sharing' Groups with overlapping SEND work streams:

- **School Health Advisory Group**
Chaired by Katie Cole - SIG member representation
- **Schools with Resource Bases Group**
Head teachers and SENCos attend. Chairship is rotated amongst host schools, reports through Head's Consultative.
SIG member representation
- **Our Time Youth Forum**

SIG member representation

- **Parents and Carers Forum**
SIG member representation
- **Tower Hamlets Independent Forum for SEND Families**
Not yet formally established – No SIG member link as yet
- **Integrated Therapies Task & Finish Group**
Chaired by Cheryl Rehal, includes SIG member representation.
- **STAG**
 - STAG has been formed in the context of the council review of transport arrangements for children and adults.
 - STAG will feed into the project board for the transport review, which CM sits on. Membership includes head teachers and parents.
 - SIG member representation

SEND Improvement Group

The SEND Improvement Group is the main local partnership group overseeing the SEND system. It includes representation from the local authority, CCG, young people, school representatives', parents and carers.

The Group meets every other month.

Each meeting of the group will focus on one of the SEND Strategic priorities', with the final meeting of the year focussed on reviewing annual progress. The content of—and response to—the Improvement Group meetings will be used to inform the reports which are cascaded through the governance structure. At each meeting, they will receive a performance update based on the SEND Performance Report.

This Group will provide oversight of the SEND Working Group and Preparing for Adulthood Group, ensuring that these groups remain tied into the strategic direction of the local area. With this in mind, the SEND Improvement Group will share updates with the sub-groups when needed.

Born Well, Growing Well (BWGW) Programme Board

Born Well, Growing Well will have direct responsibility for the SEND system work, providing a more regular level of scrutiny than the HWBB. The membership of the Board includes the CCG Lead for safeguarding and therefore provides some strategic oversight of safeguarding. There is an agreement in place for parents, carers and school representatives to request an audience with the Board at the time that the SEND Improvement Group sends its reports. This is designed to present parents and carers with a strategic platform to influence decision-making.

BWGW meets monthly.

BWGW will receive quarterly updates from the SEND Improvement Group alternating between updates on the SEND Strategy implementation and its related performance measures; and the ongoing preparations for inspection.

If there are specific areas of work where BWGW are dissatisfied with progress or require more information, they can request intermittent reports on a specific priority from the SEND Improvement Group.

Reports which have been tabled for the HWBB will have been through BWGW first.

Tower Hamlets Together (THT) Board

Tower Hamlets Together (THT) is a partnership of health and care commissioners and providers who are working together to deliver integrated health and care services for Local residents. THT have a leading role in promoting the health of the population of the borough and the oversight of health and social care integration, including service redesign, transformation and innovation. Integration is a key local priority, and this is where the interests of the Board intersect with the SEND agenda. Board members will identify opportunities to improve outcomes and reduce costs, duplication and implement joint working to address this.

The THT Partnership consists of;

- Barts Health NHS Trust;
- East London Foundation Trust;
- London Borough of Tower Hamlets;
- Tower Hamlets GP Care Group;
- Tower Hamlets Clinical Commissioning Group;
- Tower Hamlets Council of Voluntary Services

THT Board meets monthly.

These responsibilities mean that THT needs to remain sighted on the development of the local SEND system, as far as it relates to the integration of health and care. With this in mind, the SEND Improvement Group will send quarterly updates which have a specific focus on health and social care integration, including service redesign, transformation and innovation.

Health and Wellbeing Board (HWBB)

The Health and Wellbeing Board is a statutory partnership, established by the Health and Social Care Act 2012. It is the forum where leaders from the health and care system work together to improve the health and wellbeing of their local population and reduce health inequalities.

The HWBB will have the ultimate accountability for the SEND agenda in Tower Hamlets. This aligns with the accountability and oversight function it also has in relation to the Adult Learning Disability and Autism Strategies. Because the HWBB includes chief executive and political level involvement, it is an appropriate group for ultimate accountability.

The HWBB meets quarterly.

The HWBB will receive two annual update reports a year from the SEND Improvement Group, presented six months apart. One report will update on the implementation of the SEND Strategy, including a focus on performance against agreed measures. The second annual report will update on preparations for inspection.

Information sharing groups

The groups below outline how information is shared across the SEND system with groups who need to remain sighted on the work which is happening around SEND.

Joint Commissioning Executive (JCE)

The Joint Commissioning Executive is responsible for the joint strategic commissioning of services in Tower Hamlets for children and young people, adults and public health. It is the strategic forum that ensures commissioning improves local services and outcomes and achieves integration of service provision.

The JCE meets monthly.

These responsibilities mean that the JCE needs to remain sighted on the development of the local SEND system, as far as it relates to joint commissioning. With this in mind, the SEND Improvement Group will send quarterly updates to the JCE which have a specific focus on key commissioning outcomes across health, education and social care. A particular focus of these reports will be looking at the local progress towards the national statutory measure on EHCP completion within deadlines and the annual review process.

SEND Improvement Group updates to the JCE will be tabled for review by the following groups before it is presented to the JCE:

- Tower Hamlets Clinical Commissioning Group (CCG) Senior Management Team;
- Health, Adults and Communities (HAC) Directorate Leadership Team (DLT);
- Children and Culture (CC) Directorate Leadership Team

Reports to the JCE will also look at SEND financial governance, where this is the case, the reports will also be tabled to go to the Schools Forum ahead of the JCE.

If there are specific areas of work where the JCE require more information, they can request intermittent reports from the SEND Improvement Group.

Children and Families Partnership Board (CFPB)

The Children and Families Partnership Board lead and oversee the implementation of key priorities for children, young people and families, as published in the Children and Families Plan. In doing this, they also set the strategic direction for Children and Families' services in Tower Hamlets, ensuring that local priorities are identified and met effectively and efficiently.

The Board is accountable to the Tower Hamlets Partnership Executive Group, who represent the Local Strategic Partnership. There is two-way reporting between the Board and the Local Safeguarding Children Board and between the Board and the Health and Wellbeing Board to ensure clear communication and joined-up working between these groups. The membership of the Board includes the Independent Chair of the Local Safeguarding Children Board and in this way provides some strategic challenge in relation to safeguarding.

A theme of the 2016-2019 Children and Families Plan is hearing the voice of children and families. The CFPB is currently looking at how they work with parents, carers, children and young people to ensure that they can have a meaningful voice in strategic partnership work. As this develops, it will offer another route through which parents, carers, children and young people can have their voice included in influencing the SEND agenda.

Tower Hamlets Schools Forum

The Schools Forum is a decision-making group for local education providers with whom the local authority has a statutory duty to consult on relevant contracts and financial issues as laid out in the Schools Forum (England) Regulations 2012, derived from the School Standards and Framework Act

1998. Members include representatives from local nurseries, primary schools, secondary schools, special schools, a further education provider, a trade union representative pupil referral units and a local authority representative.

Amongst other things, the Forum will **decide** on the:

- de-delegation from mainstream maintained schools' budgets, for certain services to be provided centrally
- Centrally retained budgets for local authority statutory duties provided to maintained schools only
- Centrally retained Schools Budget for ongoing responsibilities, covering places in independent schools for pupils without a EHC plan, admissions, local authority statutory duties for all schools and funding for central early years expenditure.
- A reduction in the schools budget in order to fund a deficit arising in central expenditure, or from de-delegated services that is to be carried forward from a previous funding period.
- Approval to move up to 0.5% from the schools funding block to other funding blocks.

The Forum will **discuss and be consulted** on a number of topics, the most salient for SEND being:

- Amendments to the school and early years funding formulae
- Arrangements for the education of pupils with special educational needs, in particular the places to be commissioned by the local authority and schools and the arrangements for paying top-up funding.
- Arrangements for the use of pupil referral units and the education of children otherwise than at school, in particular the places to be commissioned by the local authority and schools and the arrangements for paying top-up funding.
- Arrangements for early years' provision.
- Administrative arrangements for the allocation of central government grants paid to schools via the local authority.
- Centrally retained High Needs Funding Block (HNFB) budgets.
- Contracts where the local authority is entering a contract to be funded from the Schools Budget. The local authority must notify the Forum of the terms of the proposal at least one month prior to the invitation to tender.

The Schools Forum meets at least four times a year.

The Schools Forum will receive reports on:

- SEND financial governance,
- An annual report on use of HNFB
- Intermittent reports on specific development activities

Schools consultatives'

xxx

Leadership team meetings

Services and directorates within the CCG and local authority will require mechanisms for feeding into and influencing SEND system-level decision making. Alongside having sufficient service representation within the various groups and boards, the following groups will also receive reports:

- Tower Hamlets Clinical Commissioning Group (CCG) SMT/JMT;
- Health, Adults and Communities (HAC) Directorate Leadership Team (DLT);
- Children and Culture (CC) Directorate Leadership Team

These groups will be kept abreast of what information goes to which board. The quarterly reports to these groups will cover:

- Updates on the implementation of the SEND strategy and associated KPIs
- Preparations for inspection
- SEND financial governance
- Joint commissioning updates, including the number of EHCPs completed within the national deadline
- Intermittent reports on a specific SEND priorities