

Tower Hamlets Housing Forum (THHF)

**Tracey St. Hill – RP Partnerships &
Development Officer**

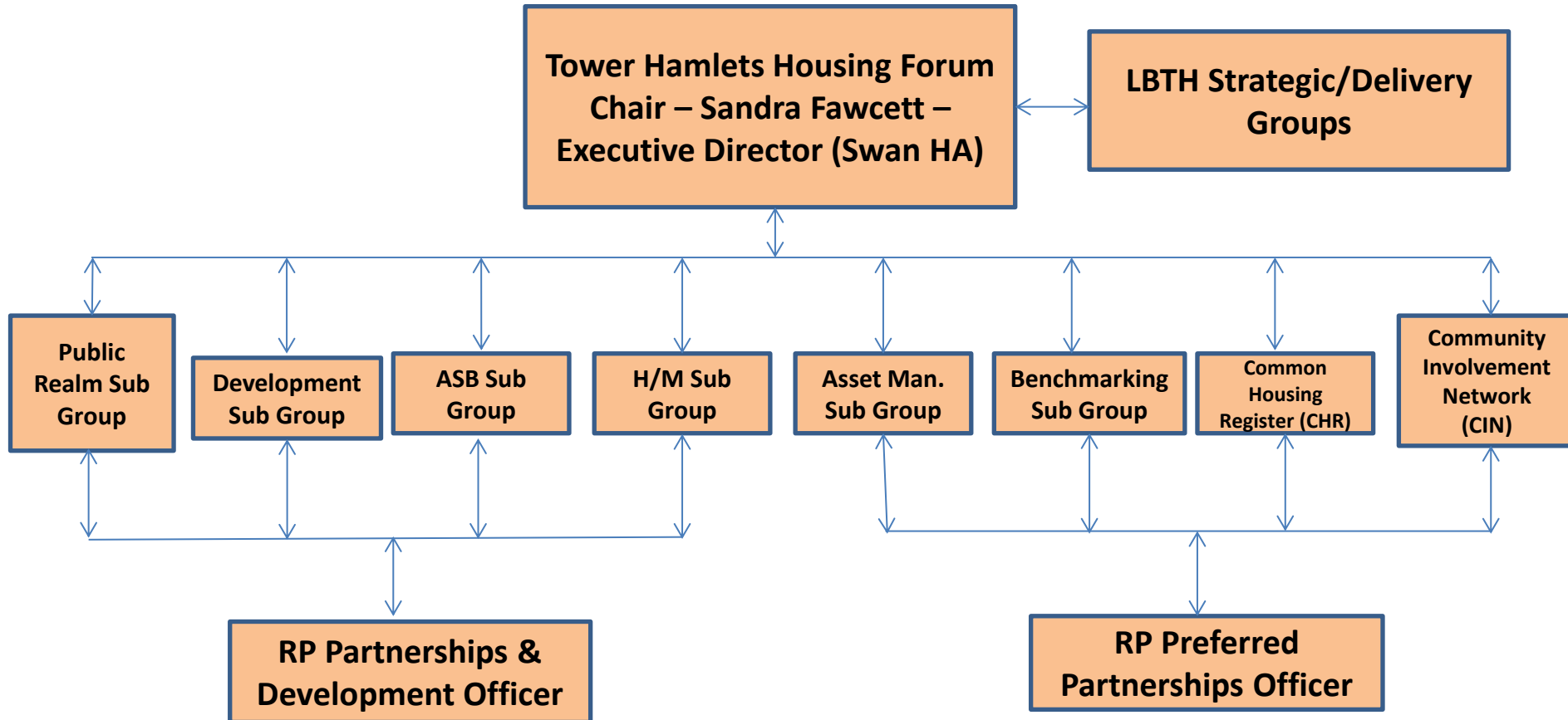
**Godfrey Heyman – RP Preferred
Partnerships Officer**

Introduction



- Successful partnership structure in place more than 15 years
- Formed to facilitate joint working between the Council and Registered Providers with stock in Tower Hamlets
- Supports the delivery of the Housing Strategy and Community Plan objectives
- Provides a mechanism through which best practice can be shared amongst members

TOWER HAMLETS HOUSING FORUM (THHF) STRUCTURE CHART



Action Planning

- Sub Group Action Plans compiled annually
- THHF Executive Action Plan developed
- Informed by the key objectives of the sub groups and other LBTH strategic objectives
- Delivery monitored by the THHF Executive
- Key achievements compiled in an Annual Report

THHF Officer Roles

- Two staff employed by the Council and THHF to develop partnership working between the Council and the RPs
- Ensure that key THHF action plans are implemented
- Help develop joint partnership initiatives or projects e.g. Joint Hoarding Framework
- Disseminate best practice among THHF sub-groups and the Council
- Act as key liaison between the Council and RPs to ensure all key Council priorities are consulted on/delivered

Benefits of THHF Partnership



Working

- Structured strategic partnership is positive practice which is not always seen elsewhere
- Strong commitment from RPs to both actively participate and contribute financially
- Development protocol ensures positive dialogue
- Partnership has delivered a range of shared projects
- THHF is represented on a range of Council partnership meetings e.g. Health and Wellbeing Board

Conclusions

- Chair of THHF will do a presentation in September to talk about the work of RPs and the role THHF plays
- Regular information will be provided to THHF on social landlord performance at a strategic level
- A THHF representative attends all meetings to support the work of the HSSC

ANY QUESTIONS?