

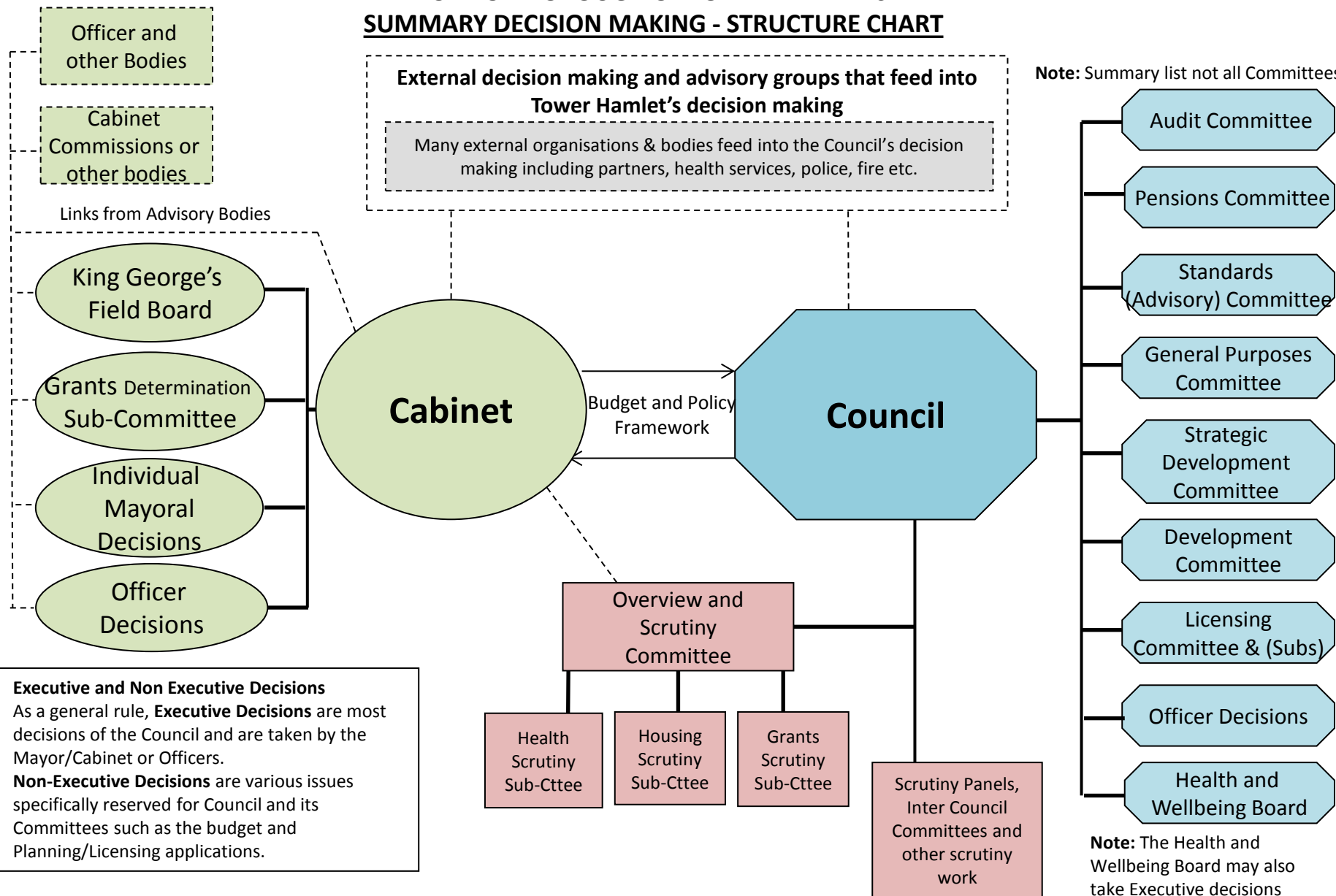
LONDON BOROUGH OF TOWER HAMLETS

SUMMARY DECISION MAKING - STRUCTURE CHART

External decision making and advisory groups that feed into Tower Hamlet's decision making

Many external organisations & bodies feed into the Council's decision making including partners, health services, police, fire etc.

Note: Summary list not all Committees



Executive and Non-Executive Decisions
 As a general rule, **Executive Decisions** are most decisions of the Council and are taken by the Mayor/Cabinet or Officers.
Non-Executive Decisions are various issues specifically reserved for Council and its Committees such as the budget and Planning/Licensing applications.

Note: The Health and Wellbeing Board may also take Executive decisions

Note: Some bodies omitted for clarity

KEY:

- Non-Executive Decision Making
- Executive Decision Making
- Scrutiny Bodies
- Advisory Bodies