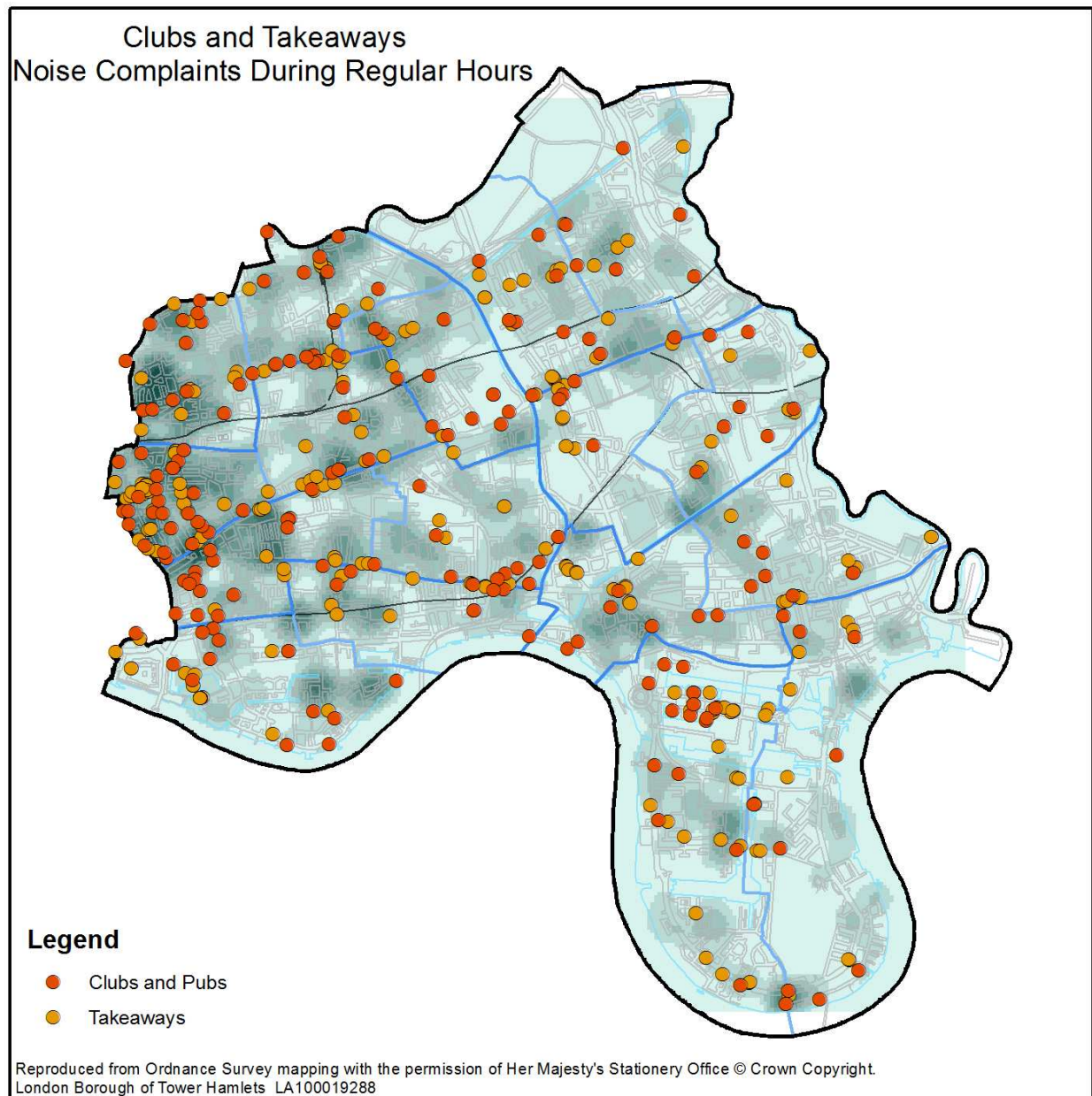


## Appendix Two (a)

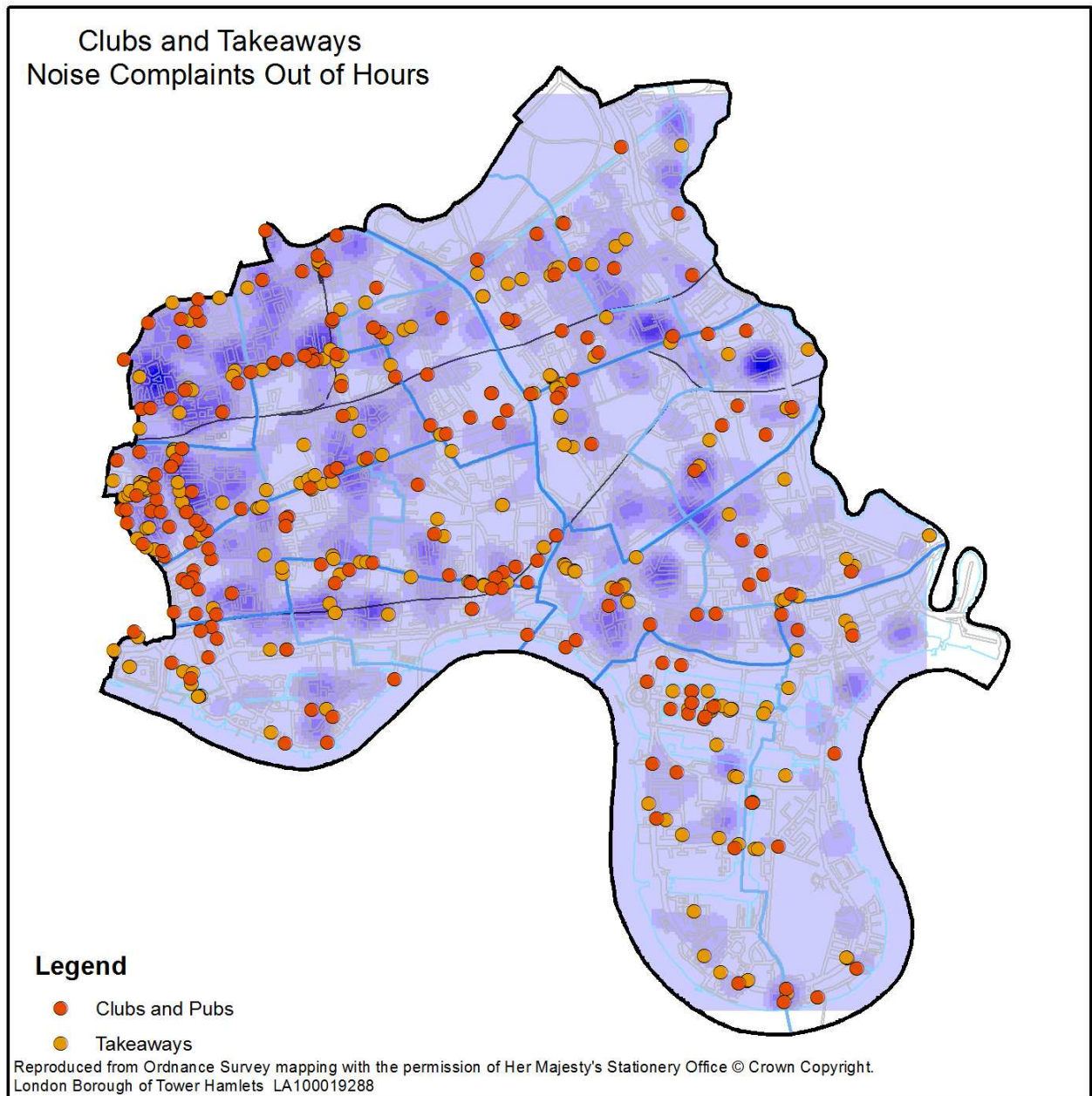
### Noise Complaints and the locations of takeaways, Clubs/pubs

The following map shows the locations of the takeaways and licensed premises (Pubs and clubs) within the Borough of Tower Hamlets and a hotspot map of the complaints during regular hours:



It can be seen from the map that there are concentrations of pubs/clubs and takeaways along Brick Lane, Commercial Road in Shadwell/St Dunstons and along Bethnal Green Road. The hotspots are Brick Lane, Arnod Circus, Stepney, Whitechapel, Bethnal Green and Wapping.

The following map shows the locations of the takeaways and licensed premises (Pubs and clubs) within the Borough of Tower Hamlets and a hotspot map of the complaints made out of hours:



The hotspot locations for noise complaints out of hours are similar to regular hours, except for hotspots in Bow West (Addington Road) and Bromley by Bow (Bromley Recreation Ground).

The following table shows the volume of calls for out of hours and regular noise by ward with the number of takeaways and clubs/pubs.

Ward	Clubs/Pubs	Takeaways	OOH	Regular Noise
Bethnal Green North	13	9	327	136
Bethnal Green South	10	15	245	142
Blackwall and Cubitt Town	9	14	207	134
Bow East	6	5	259	112
Bow West	10	18	218	102
Bromley by Bow	7	25	224	78
East India and Lansbury	6	12	177	87
Limehouse	7	11	254	120
Mile End and Globe Town	11	6	192	119
Mile End East	4	8	200	83
Millwall	18	27	198	152
Shadwell	9	10	192	108
Spitalfields and Banglatown	26	72	273	185
St. Dunstans and Stepney Green	9	6	177	117
St. Katherine's and Wapping	14	34	167	126
Weavers	13	10	403	193
Whitechapel	16	14	270	192
<b>Total</b>	<b>188</b>	<b>296</b>	<b>3983</b>	<b>2186</b>

The greatest number of Pubs/Clubs and Takeaways are in Spitalfields and Banglatown (14% and 224% respectively). 8% of all regular noise calls and 7% of out of hours calls occur in this ward.

The following table shows the number of takeaways and pubs/clubs by ward and the number of reports that has occurred within 100m:

Ward	Takeaways and Pubs/Clubs	OOH	Regular Noise	% OOH	% Regular
Bethnal Green North	22	153	73	4%	3%
Bethnal Green South	25	126	77	3%	4%
Blackwall and Cubitt Town	23	46	31	1%	1%
Bow East	11	79	32	2%	1%
Bow West	28	102	45	3%	2%
Bromley by Bow	32	64	31	2%	1%
East India and Lansbury	18	44	24	1%	1%
Limehouse	18	63	41	2%	2%
Mile End and Globe Town	17	69	45	2%	2%
Mile End East	12	37	19	1%	1%
Millwall	45	105	73	3%	3%
Shadwell	19	78	50	2%	2%
Spitalfields and Banglatown	98	201	138	5%	6%
St. Dunstans and Stepney Green	15	66	36	2%	2%
St. Katherine's and Wapping	48	42	44	1%	2%
Weavers	23	238	119	6%	5%
Whitechapel	30	138	122	3%	6%
<b>Total</b>	<b>484</b>	<b>1651</b>	<b>1000</b>	<b>41%</b>	<b>46%</b>

46% of all complaints during regular hours occur within 100metres from a pub/club or takeaway and 41% of all out of hours noise calls. Overall, whilst a small percentage(7%) of the overall amount of out of hours calls occurred in Spitalfields and Banglatown, 74% of these occurred within 100m of a pub/club or takeaway. This is low in comparison to the number of regular noise complaints. 8% of all regular noise complaints occur in Spit and Bang yet 75% of these complaints occur within 100metres of a pub/club or takeaway. Spit and bang is the smallest ward in Tower Hamlets covering 0.63 square kilometres. It has the highest concentration of pubs/clubs and takeaways with one every 6,514 square meters<sup>1</sup>.

The complaints in Weavers are high in comparison to the number of establishments. With 23 premises (pubs/clubs and takeaways combined) there were an average of 5 complaints per premise during regular hours, which increases to 10 during out of hours.

---

<sup>1</sup> This is in comparison to Bow East, which is the third largest ward but has the lowest concentration of pubs/clubs and takeaways at 1 every 169,717 metres. Spit and Bang therefore has 26 times the number of pubs/clubs and takeaways in comparison to Bow East.