

Refreshing the ELHCP Strategy: Progress against the deliverables in the 2016 Plan (1)

- Funding secured to support transformation by ELHCP - £24m in 2018/19
- Integrated Care Systems - a framework and model for integrated care system development has been agreed across ELHCP to support development at pace and with consistency

Primary Care	Urgent & Emergency Care	Mental Health	Maternity	Cancer
<ul style="list-style-type: none"> • Practice training programme developed for Newham, will be evaluated with a view to roll out across NEL • GP retention plans in all federations, 15 GPs retained in BHR (SPIN scheme) and 140 GPs supported via general retention funding • System Leadership Training Programme developed to support recruitment and retention of GP nurses 	<ul style="list-style-type: none"> • Launched new NHS 111 Clinical Assessment Service achieved • NHS on line rolled out • Direct booking rolled out, into Hubs and Home Visiting. Direct booking into UTCs being implemented • Successful bids for pharmacists in CAS and home care • Successful bid to support rotational workforce 	<ul style="list-style-type: none"> • Enhanced HPBoS model approved • 24/7 crisis line with 111 inc warm transfer available across all 7 boroughs • Psychiatric Liaison available at all 6 acute hospital sites • Improving CYP access and performance, additional £668K secured • Expansion of perinatal MH services, increasing staffing and reducing waiting times 	<ul style="list-style-type: none"> • Birthing centre development included in estates strategy. • On track for reducing perinatal mortality • 80% of women receiving more personalised care • All women receiving choice of 3 places of birth • ‘Starting a Career as a Midwife’ programme launched to encourage new talent into north east London 	<ul style="list-style-type: none"> • All CCGs consistently meeting the cancer 62 day standard • Secured £5.2M to develop early diagnosis centre • Secured a further £1.6M to support cancer transformation, early diagnosis and MRI • FIT / HPV initiatives being rolled out in 19/20

Refreshing the ELHCP Strategy: Progress against the deliverables in the 2016 Plan (2)



Prevention

- Procurement of diabetes provider and delivery of National Diabetes Prevention Programme.
- Smoking cessation programmes supported across NEL
- Prevention embedded in workstreams including mental health, primary care, maternity

Workforce

- Successful bids to support workforce development (£1.5m) including £1m across other workstreams
- International GP recruitment, 8 GPs in 18/19
- Successful medical student expansion scheme, 32 additional places in 19/20
- Employment market in PC, 21 Physician Associates graduating through ELHCP scheme (on target to have more PAs than rest of London combined)

Digital

- Successful bid for £7.5m London wide digital infrastructure capital funding, £3.5m in 18/19
- eLPR rolled out in WEL and CH and underway in BHR. Usage doubled in 1 year (current 112,000 views per month)
- eRS programme delivered and paper switch off achieved
- ELHCP health analytics programme (Discovery) is a core component of the London Health Care Record programme

Estates

- Estate strategy developed and Board established
- Completed a clear and prioritised list of capital cases (as part of capital plan for NEL)
- Working to improve utilisations and productivity: circa £7m void and moving utilization of clinical space from 60% to 75%

The NHS Long Term Plan has a number of commitments and issues where we need to develop our approach further

Personalisation

- Consistent social prescribing approach
- Developing personal health budgets
- Personal care records and plans
- Use of telehealth and remote monitoring

Workforce

- A single Partnership approach with local councils and other partners
- Better use of technology and SMART working across partners
- Extend support and use of volunteers / apprentices

Primary Care

- Increasing access
- Support to prevention and lifestyle management
- Care home support

Prevention

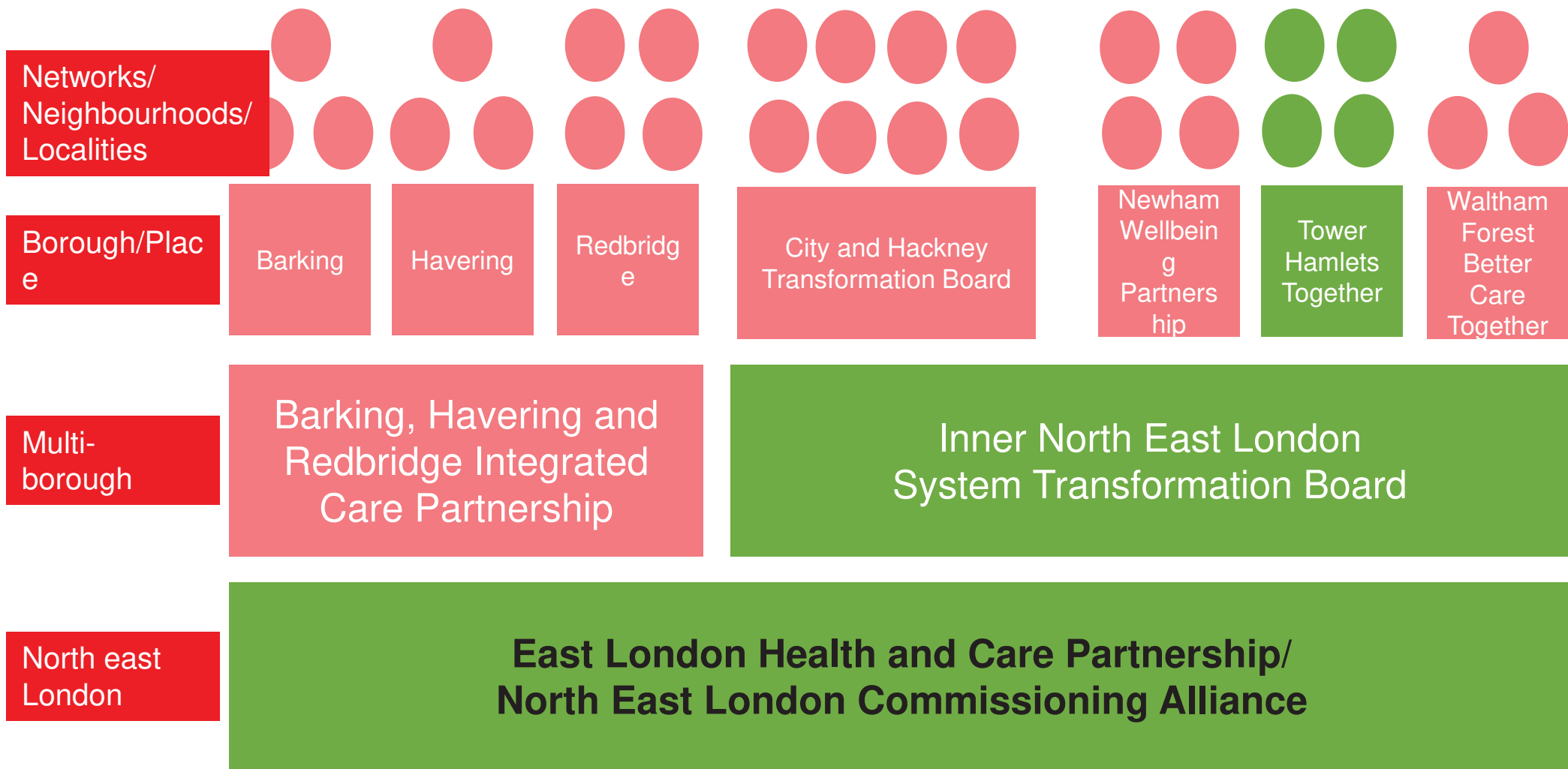
- Support to self-care and building local resilience
- Community wealth building / regeneration – work / leisure / crime

Resources

- Investment to support transformation
- Shifting resources into community and primary care from hospitals

- Good practice – some boroughs lead on key areas and looking to adopt across NEL – social prescribing / prevention / personalisation / SMART working / End of Life care

Integrated Health and Care in North East London (February 2019 DRAFT) and how Tower Hamlets fits in



ELHCP common framework for system functions

(February 2019 DRAFT)



<p>Neighbourhood/ Network/ Locality</p>	<ul style="list-style-type: none"> • Understanding local need, including predictive analysis • Coordinating care for the defined population • Improving service access and quality • Addressing inequalities and unmet need • Co-producing and co-designing health services with patients and the public • Helping people to stay healthy to include the wider determinants of health and positive mental wellbeing • Using personalised interventions to support care navigation e.g. social prescribing • Mobilising community assets to improve health and wellbeing
<p>Borough/ Place</p>	<ul style="list-style-type: none"> • Developing local health and care plans to integrate health and council services at neighbourhood/network and borough level to address key challenges and improve outcomes • Ensuring borough-based service commissioning and delivery • Supporting the development of neighbourhoods and networks and to hold them too account • Addressing inequalities within and between neighbourhoods/networks • Focus on effective use of resources across the system, improving outcomes and quality improvement
<p>Multi-borough</p>	<ul style="list-style-type: none"> • Strengthen system support for local health and care integration partnerships and plans • Enable and support greater provider collaboration, increasing utilisation of existing capacity and resource • Scale up transformation efforts to maximise population impact • Develop and enable a collaborative approach to tackling significant system challenges

<p>ELHCP</p>	<ul style="list-style-type: none"> • Oversight and support of system development and 'once for north east London' infrastructure development e.g. new payment mechanisms • Delivering on enablers to support system development including digital, workforce and estates • Holding systems to account for delivery of outcomes-based care • Develops the evidence base that tests new and innovative solutions for specific population • Leading planning and commissioning of service change best planned across the East London Health and Care Partnership footprint • Overall financial strategy including transformation funds and risk management
<p>NELCA</p>	<ul style="list-style-type: none"> • Strategic commissioning development around key priorities and outcomes • Commissioning governance and decision making • Future responsibility for specialised commissioning

Refreshing the ELHCP Strategy: Draft Engagement Timetable – for Feedback please



Engagement and discussion with Health & Wellbeing Boards in each local Council area

Regular council/CCG public engagement events

Regular provider patient forum meetings

Healthwatch events – local and cross-ELHCP activity co-ordinated by Waltham Forest Healthwatch

